



MODEL G2904

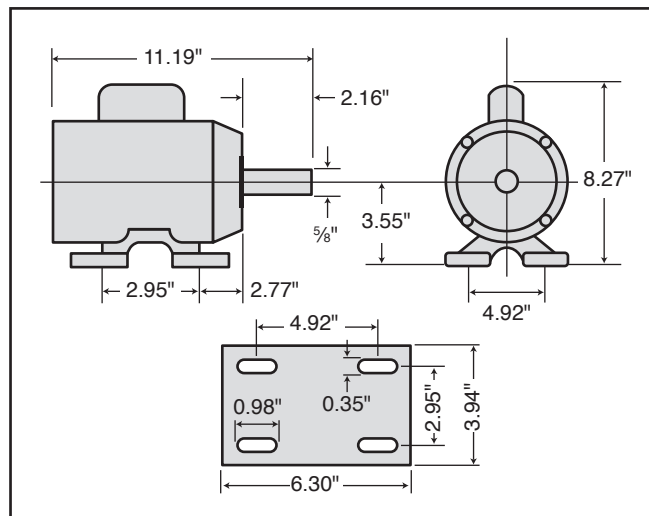
3/4 HP ELECTRIC MOTOR

INSTRUCTIONS

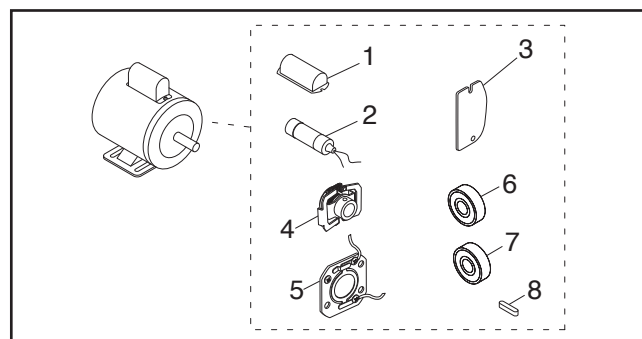
For questions or help with this product contact Tech Support at (570) 546-9663 or techsupport@grizzly.com

Model G2904 Specifications

Power 3/4 HP
 Cycle.....60 Hz
 Voltage.....110V/220V
 Rewired 110V
 Amps9.6A/4.8A
 Speed 3450 RPM
 Phase Single-Phase
 Class..... E



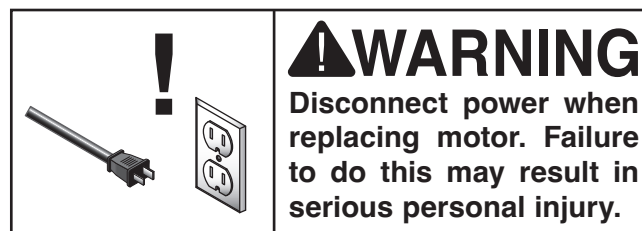
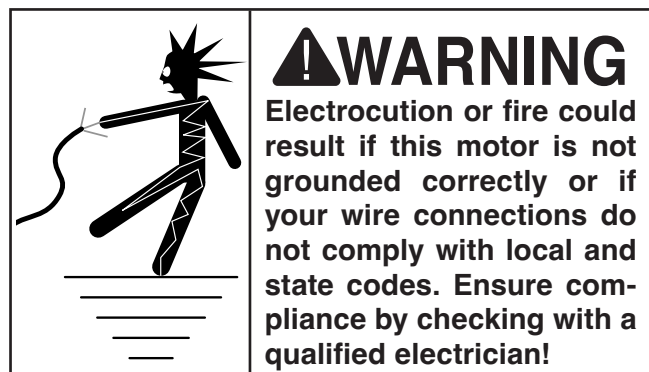
Replaceable Parts



REF	PART #	DESCRIPTION
1	P2904001	S CAPACITOR COVER
2	P2904002	S CAPACITOR 200M 125V 1-3/8 X 2-3/8
3	P2904003	WIRING COVER PLATE
4	P2904004	CENTRIFUGAL SWITCH 5/8-3450
5	P2904005	CONTACT PLATE
6	P2904006	BALL BEARING 6202ZZ
7	P2904007	BALL BEARING 6203ZZ
8	P2904008	KEY 3/16 X 3/16 X 1-1/4

Making Wire Connections

If you are unsure how to attach wires to terminals, DO NOT continue. Contact an electrician for assistance. Connecting wires improperly may cause them to come loose or contact other wires, which can cause electrocution, fire, or a short.



COPYRIGHT © JULY, 2012 BY GRIZZLY INDUSTRIAL, INC., REVISED FEBRUARY, 2025 (LW)
 NO PORTION OF THIS INSTRUCTION SHEET MAY BE REPRODUCED IN ANY SHAPE
 OR FORM WITHOUT THE WRITTEN APPROVAL OF GRIZZLY INDUSTRIAL, INC.
 (FOR MODELS MFD. SINCE 02/25) #KN15080 PRINTED IN TAIWAN

V2.02.25

Keep for Future Reference