

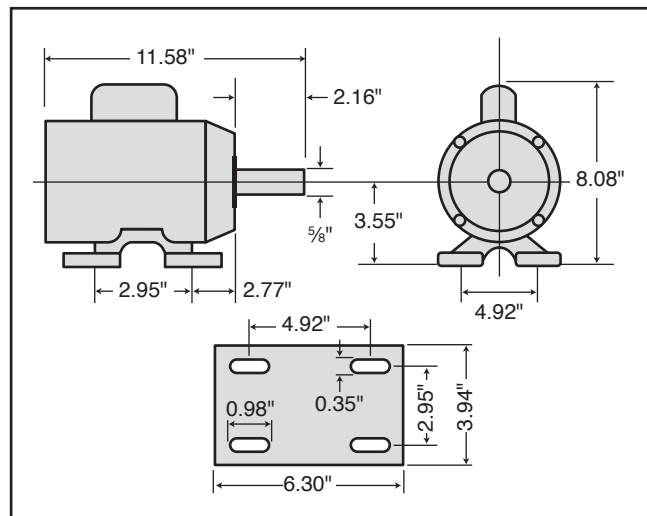


# MODEL G2905 1 HP ELECTRIC MOTOR INSTRUCTIONS

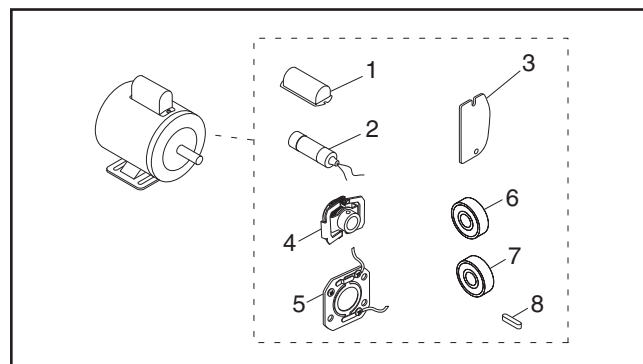
For questions or help with this product contact Tech Support at (570) 546-9663 or techsupport@grizzly.com

## Model G2905 Specifications

Power ..... 1 HP  
Cycle.....60Hz  
Voltage..... 110/220V  
Prewired ..... 110V  
Amps ..... 11.6/5.8A  
RPM..... 1725  
Phase ..... Single  
Class..... E



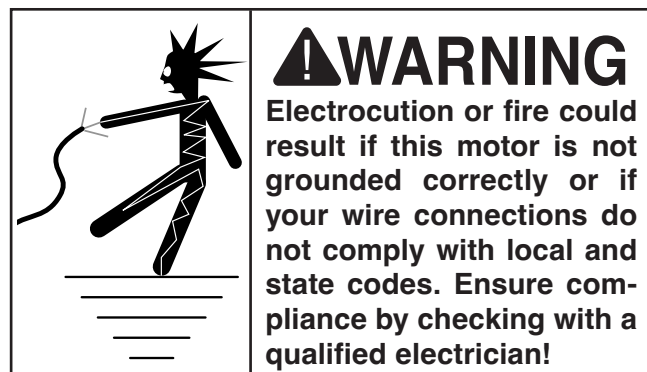
## Replaceable Parts



REF	PART #	DESCRIPTION
1	P2905001	S CAPACITOR COVER
2	P2905002	S CAPACITOR 300M 125V 1-3/4 X 3-3/8
3	P2905003	WIRING COVER PLATE
4	P2905004	CENTRIFUGAL SWITCH 1/2-1725
5	P2905005	CONTACT PLATE
6	P2905006	BALL BEARING 6202ZZ
7	P2905007	BALL BEARING 6203ZZ
8	P2905008	KEY 3/16 X 3/16 X 1-1/4
9	P2905009	R CAPACITOR COVER
10	P2905010	R CAPACITOR 30M 250V 1-3/8 X 2-3/8

## Making Wire Connections

If you are unsure how to attach wires to terminals, DO NOT continue. Contact an electrician for assistance. Connecting wires improperly may cause electrocution, fire, or a short.



COPYRIGHT © JUNE, 2012 BY GRIZZLY INDUSTRIAL, INC., REVISED JUNE, 2024 (LW)  
NO PORTION OF THIS INSTRUCTION SHEET MAY BE REPRODUCED IN ANY SHAPE  
OR FORM WITHOUT THE WRITTEN APPROVAL OF GRIZZLY INDUSTRIAL, INC.  
(FOR MODELS MFD. SINCE 08/24) #KN15081 PRINTED IN TAIWAN

V2.06.24

\*\*\*Keep for Future Reference\*\*\*