



MODEL G2907

1½ HP ELECTRIC MOTOR

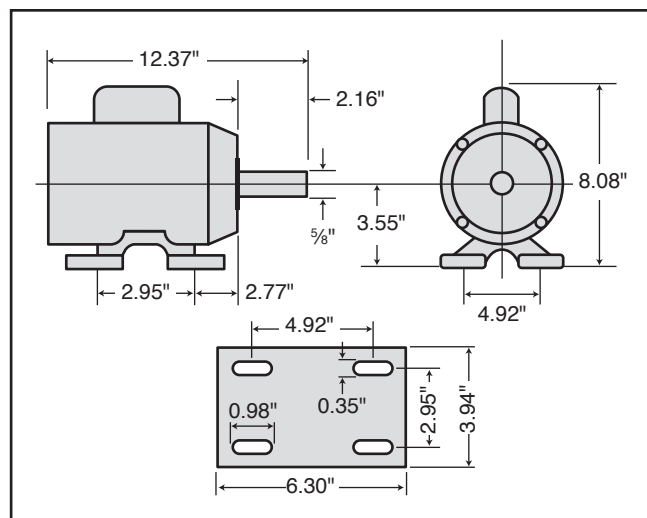
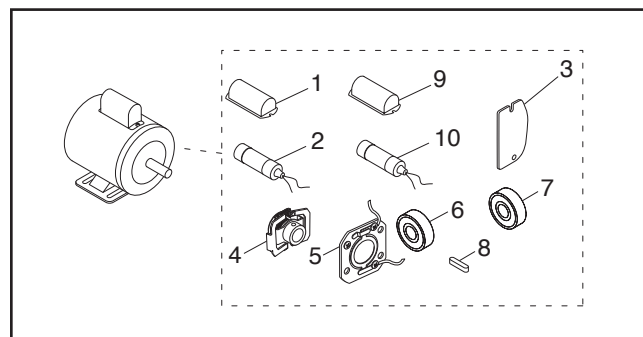
INSTRUCTIONS

For questions or help with this product contact Tech Support at (570) 546-9663 or techsupport@grizzly.com

Model G2907 Specifications

Power 1½ HP
 Cycle..... 60Hz
 Voltage..... 110/220V
 Prewired 110V
 Amps 17/8.5A
 RPM..... 1725
 Phase Single
 Class..... E

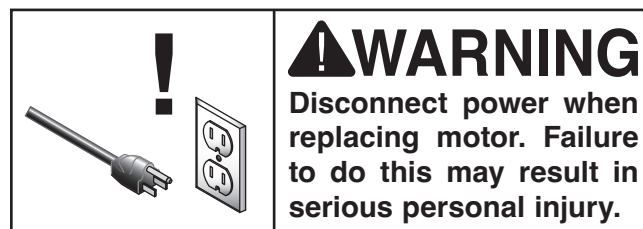
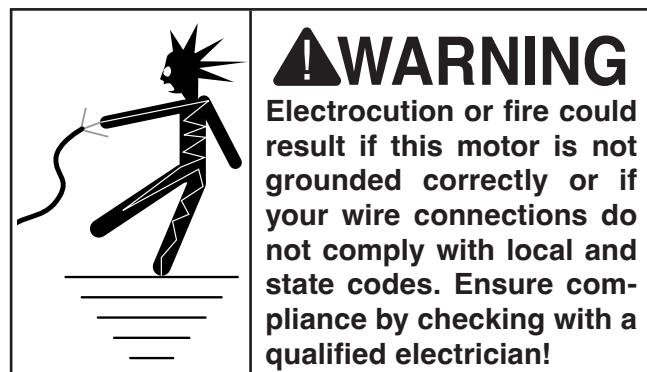
Replaceable Parts



REF	PART #	DESCRIPTION
1	P2907001	S CAPACITOR COVER
2	P2907002	S CAPACITOR 400M 125V 1-3/4 X 3-3/8
3	P2907003	WIRING COVER PLATE
4	P2907004	CENTRIFUGAL SWITCH 1/2-1725
5	P2907005	CONTACT PLATE
6	P2907006	BALL BEARING 6202ZZ
7	P2907007	BALL BEARING 6203ZZ
8	P2907008	KEY 3/16 X 3/16 X 1-1/4
9	P2907009	R CAPACITOR COVER
10	P2907010	R CAPACITOR 50M 250V 1-1/2 X 2-3/8

Making Wire Connections

If you are unsure how to attach wires to terminals, DO NOT continue. Contact an electrician for assistance. Connecting wires improperly may cause electrocution, fire, or a short.



COPYRIGHT © JULY, 2012 BY GRIZZLY INDUSTRIAL, INC., REVISED JUNE, 2024 (LW)
 NO PORTION OF THIS INSTRUCTION SHEET MAY BE REPRODUCED IN ANY SHAPE
 OR FORM WITHOUT THE WRITTEN APPROVAL OF GRIZZLY INDUSTRIAL, INC.
 (FOR MODELS MFD. SINCE 08/24) #KN15082 PRINTED IN TAIWAN

V2.06.24

Keep for Future Reference