



# 30" SHEET METAL MACHINE

## MODEL G4011

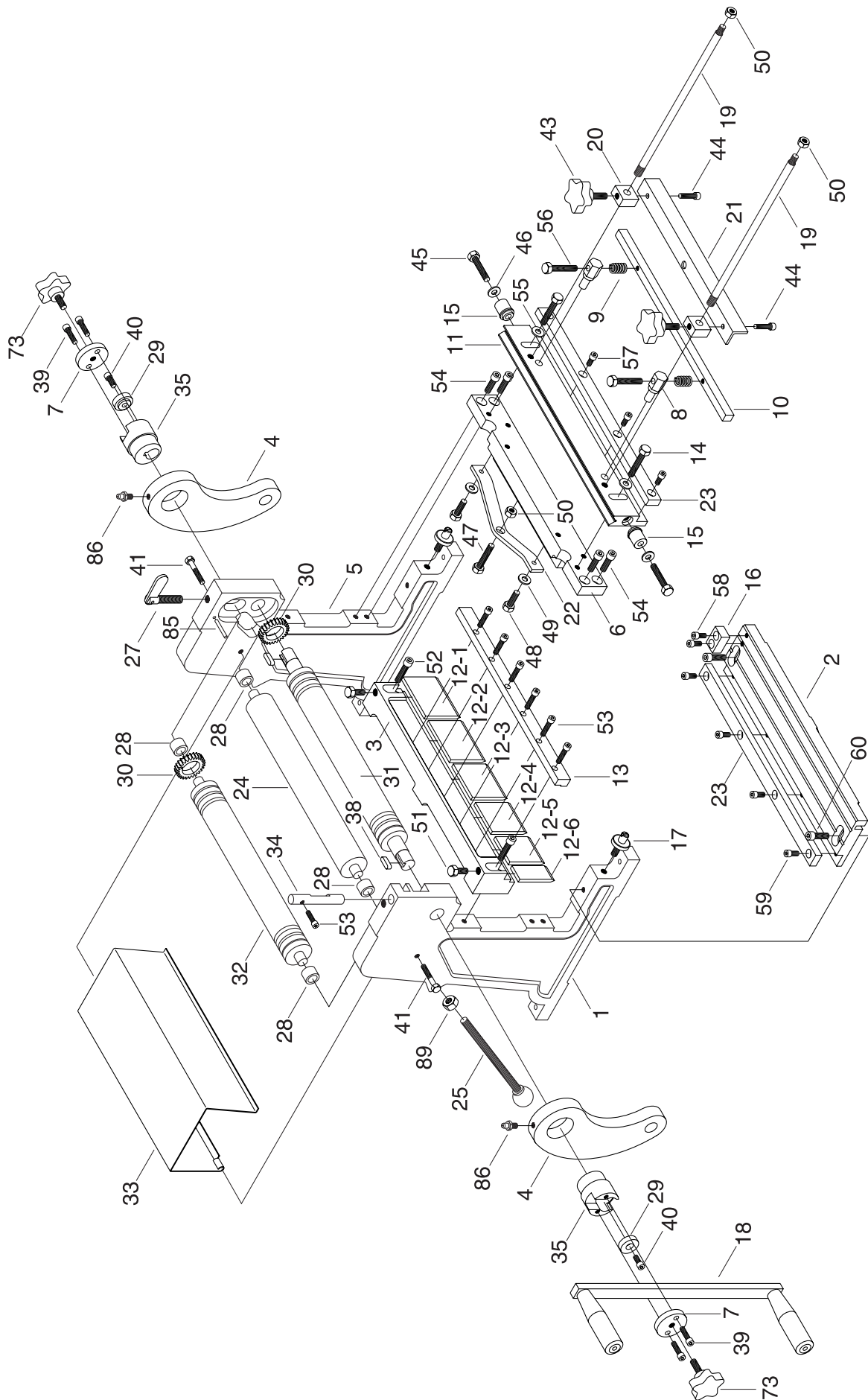
## PARTS LIST



COPYRIGHT © JANUARY, 2002 BY GRIZZLY INDUSTRIAL, INC. REG.  
**WARNING: NO PORTION OF THIS MANUAL MAY BE REPRODUCED IN ANY SHAPE  
OR FORM WITHOUT THE WRITTEN APPROVAL OF GRIZZLY INDUSTRIAL, INC.**  
GRIZZLY ID# 404301623. REVISED JANUARY, 2003. PRINTED IN CHINA

#### ONLINE PARTS LIST DISCLAIMER

THESE PARTS REPRESENT THE CONFIGURATION OF THE MACHINE AS IT IS CURRENTLY BEING SHIPPED. THE MACHINE CONFIGURATION CAN CHANGE AS PRODUCT IMPROVEMENTS ARE INCORPORATED. IF YOU OWN AN EARLIER VERSION OF THE MACHINE, THIS PARTS LIST MAY NOT EXACTLY DEPICT YOUR MACHINE. CONTACT CUSTOMER SERVICE IF YOU HAVE ANY QUESTIONS ABOUT PART DIFFERENCES. PREVIOUS PARTS LIST VERSIONS ARE NOT AVAILABLE ONLINE.



G4011 30" Sheet Metal Machine

REF	PART #	DESCRIPTION
1	P4011001	LEFT WALL
2	P4011002	WORK BENCH
3	P4011003	CROSSBEAM
4	P4011004	CRANK ARM
5	P4011005	RIGHT WALL
6	P4011006	REAR FRAME
7	P4011007	COVER
8	P4011008	PRESS PLATE BRACKET
9	P4011009	SPRING
10	P4011010	PRESSING PLATE
11	P4011011	MOVING CUTTER PLATE
12-1	P4011012-1	UPPER BREAKING DIE 10"
12-2	P4011012-2	UPPER BREAKING DIE 8"
12-3	P4011012-3	UPPER BREAKING DIE 6"
12-4	P4011012-4	UPPER BREAKING DIE 3"
12-5	P4011012-5	UPPER BREAKING DIE 2"
12-6	P4011012-6	UPPER BREAKING DIE 1"
13	P4011013	DIE CLAMPING PLATE
14	PB15M	HEX BOLT M8-1.25 X 40
15	P4011015	ARM ROLLING WHEEL
16	P4011016	POSITIONER
17	P4011017	ADJUSTABLE BOLT
18	P4011018	HANDLE ARM
19	P4011019	THREADED ROD
20	P4011020	POSITIONING PIECE
21	P4011021	POSITIONING PLATE
22	P4011022	SUPPORTING PLATE
23	P4011023	CUTTER
24	P4011024	BACK PRESSING ROLL
25	P4011025	LOCK SCREW
27	P4011027	ADJUSTABLE BOLT
28	P4011028	BUSHING
29	P4011029	PRESS COVER

REF	PART #	DESCRIPTION
30	P4011030	GEAR
31	P4011031	LOWER PRESSING ROLL
32	P4011032	UPPER PRESSING ROLL
33	P4011033	PROTECTING COVER
34	P4011034	ROTATION SHAFT
35	P4011035	ECCENTRIC SHAFT
38	PK07M	KEY 6 X 6 X 20
39	PSB01M	CAP SCREW M6-1.0 X 16
40	P4011040	CAP SCREW M6-1.0 X 8
41	P4011041	HEX BOLT M6-1.0 X 44
43	P4011043	KNOB
44	P4011044	CAP SCREW M6-1.0 X 8
45	PB15M	HEX BOLT M8-1.25 X 40
46	PW01M	FLAT WASHER 8MM
47	PB15M	HEX BOLT M8-1.25 X 40
48	PB19M	HEX BOLT M8-1.25 X 24
49	PW01M	FLAT WASHER 8MM
50	PN03M	HEX NUT M8-1.25
51	P4011051	HEX BOLT M10-1.5 X 16
52	PSB13M	CAP SCREW M8-1.25 X 30
53	P4011053	CAP SCREW M6-1.0 X 24
54	PSB11M	CAP SCREW M8-1.25 X 16
55	PW01M	FLAT WASHER 8MM
56	P4011056	HEX BOLT M6-1.0 X 45
57	PSB04M	CAP SCREW M6-1.0 X 10
58	PSB04M	CAP SCREW M6-1.0 X 10
59	PSB04M	CAP SCREW M6-1.0 X 10
60	PSB14M	CAP SCREW M8-1.25 X 20
73	P4011064	HANDLE ADJUST KNOB
85	P4011085	PIN
86	P4011086	GREASE FITTING 5/16"X1/4"
89	PN02M	HEX NUT 10MM