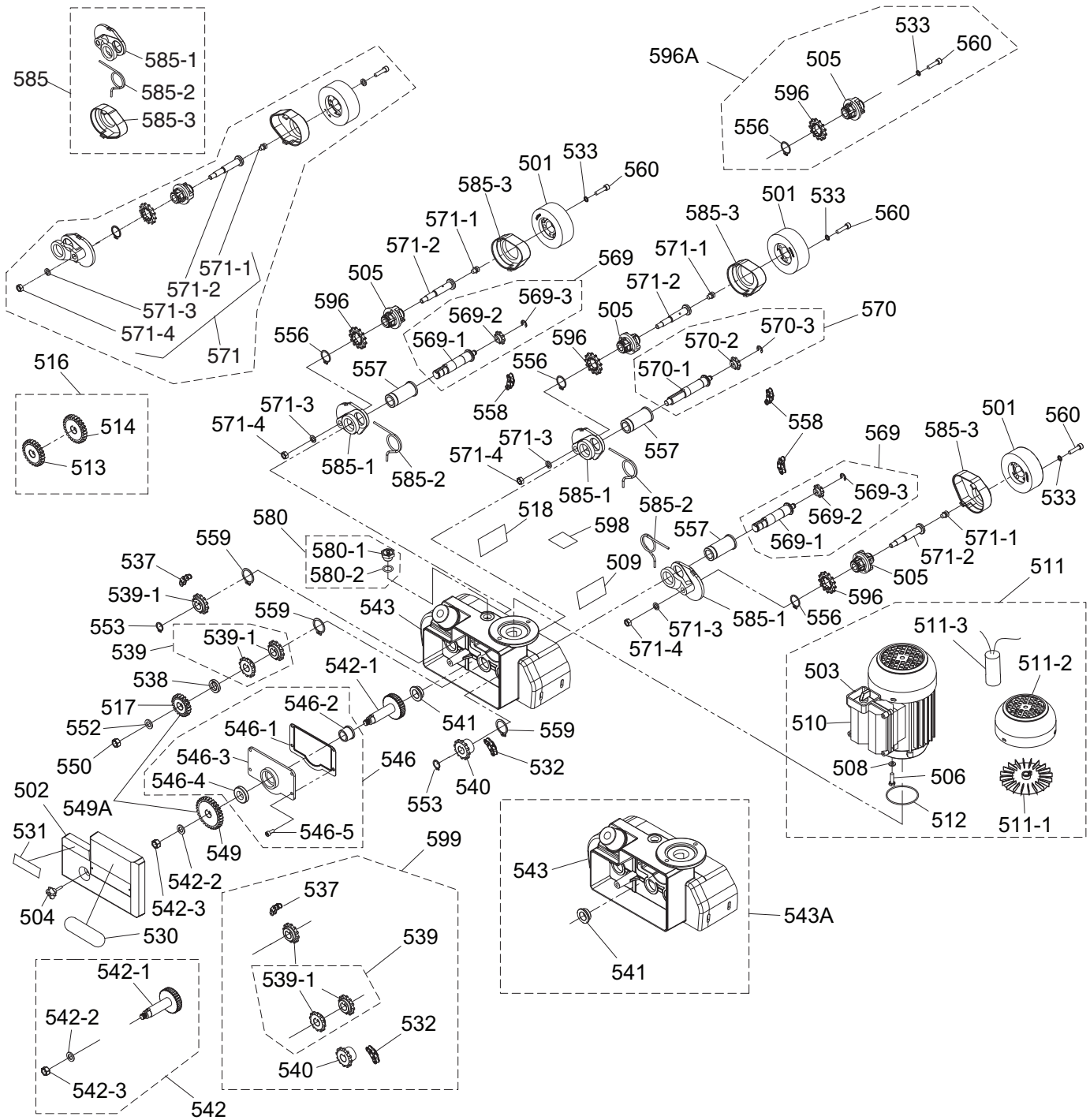


SECTION 9: PARTS

Main Breakdown



Main Parts List

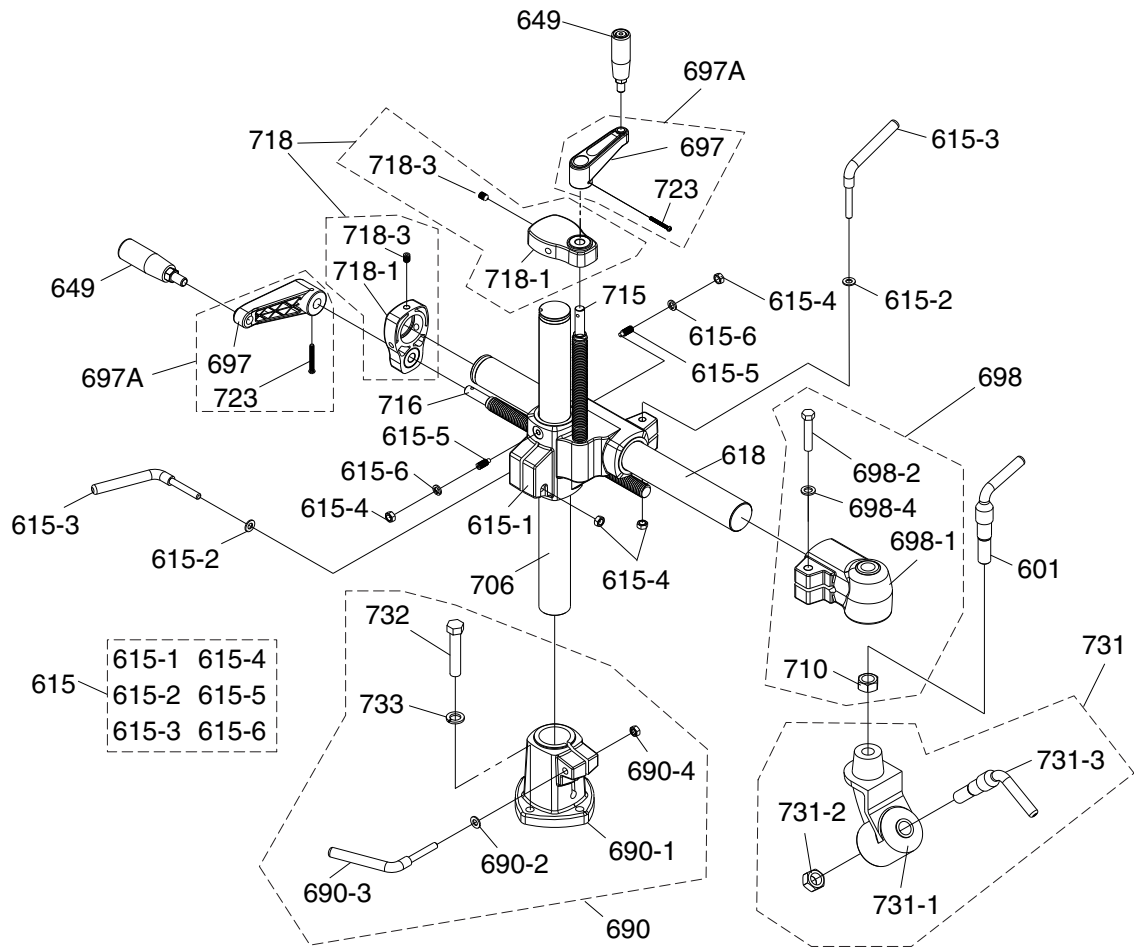
REF	PART #	DESCRIPTION
501	P4176501	RUBBER WHEEL 80 X 30
502	P4176502	GEAR COVER
503	P4176503	SWITCH ASSEMBLY 1/4HP
504	P4176504	KNOB BOLT M6-1 X 30
505	P4176505	SPROCKET BUSHING
506	P4176506	HEX BOLT M6-1 X 20
508	P4176508	FLAT WASHER 6MM
509	P4176509	QC LABEL
510	P4176510	SWITCH BOX ASSEMBLY
511	P4176511	MOTOR 1/4HP 110V 1-PH
511-1	P4176511-1	MOTOR FAN
511-2	P4176511-2	MOTOR FAN COVER
511-3	P4176511-3	R CAPACITOR 20M 250V 1-3/8 X 2
512	P4176512	SEAL 25 X 42 X 7T
513	P4176513	GEAR 24T
514	P4176514	GEAR 26T
516	P4176516	GEAR SET 24T/26T
517	P4176517	GEAR 20T
518	P4176518	GENERAL WARNING LABEL
530	P4176530	DOMED GRIZZLY LABEL
531	P4176531	COVER/SWITCH/ELECTRICITY LABEL
532	P4176532	CHAIN 22-LINKS
533	P4176533	LOCK WASHER 6MM
537	P4176537	CHAIN 30-LINKS
538	P4176538	BUSHING
539	P4176539	SPROCKET SET 12T/12T
539-1	P4176539-1	SPROCKET 12T
540	P4176540	SPROCKET 12T X 3/8"
541	P4176541	BUSHING 29 X 37 X (7 + 3)
542	P4176542	WORM GEAR SHAFT ASSEMBLY
542-1	P4176542-1	WORM GEAR SHAFT
542-2	P4176542-2	FLAT WASHER 3/8
542-3	P4176542-3	HEX NUT M10-1.5
543A	P4176543A	FRAME ASSEMBLY
543	P4176543	FRAME
546	P4176546	WORM GEAR BOX COVER ASSEMBLY
546-1	P4176546-1	WORM COVER GASKET
546-2	P4176546-2	BUSHING 29D X (23D X 15 X 3)

REF	PART #	DESCRIPTION
546-3	P4176546-3	WORM COVER
546-4	P4176546-4	OIL SEAL 17 X 32 X 7
546-5	P4176546-5	CAP SCREW M5-.8 X 12
549A	P4176549A	GEAR SET 20T/30T
549	P4176549	GEAR 30T
550	P4176050	HEX NUT M10-1.5
552	P4176052	FLAT WASHER 3/8
553	P4176553	EXT RETAINING RING 15MM
556	P4176556	EXT RETAINING RING 22MM
557	P4176557	TUBE
558	P4176558	CHAIN 18-LINKS
559	P4176059	EXT RETAINING RING 26MM
560	P4176560	CAP SCREW M6-1 X 25
569	P4176569	SPROCKET SHAFT ASSY W/O THREADS
569-1	P4176569-1	SPROCKET SHAFT W/O THREADS
569-2	P4176569-2	SPROCKET 8T
569-3	P4176569-3	E-CLIP 14MM
570	P4176570	SPROCKET SHAFT ASSY W/THREADS
570-1	P4176570-1	SPROCKET SHAFT W/THREADS
570-2	P4176570-2	SPROCKET 8T
570-3	P4176570-3	E-CLIP 14MM
571	P4176571	SPROCKET SHAFT ASSEMBLY
571-1	P4176571-1	GREASE FITTING M6-1 X 5
571-2	P4176571-2	SPROCKET SHAFT
571-3	P4176571-3	LOCK WASHER 8MM
571-4	P4176571-4	HEX NUT M8-1.25
580	P4176580	OIL CAP ASSEMBLY
580-1	P4176580-1	OIL CAP 16MM
580-2	P4176580-2	O-RING 11.8 X 2.4 P12
585	P4176585	SPROCKET CASE ASSEMBLY
585-1	P4176585-1	SPROCKET CASE
585-2	P4176585-2	TORSION SPRING 30 X 6
585-3	P4176585-3	CASE COVER
596A	P4176596A	ROLLER SPROCKET ASSEMBLY
596	P4176596	ROLLER SPROCKET 13T
598	P4176598	LUBRICATION LABEL
599	P4176599	TRANSMISSION ASSEMBLY

Please Note: We do our best to stock replacement parts whenever possible, but we cannot guarantee that all parts shown here are available for purchase. Call (800) 523-4777 or visit our online parts store at www.grizzly.com to check for availability.



Base Breakdown



REF	PART #	DESCRIPTION
601	P4176601	LEVER M6-1
615	P4176615	ELEVATING BRACKET ASSEMBLY
615-1	P4176615-1	ELEVATING BRACKET
615-2	P4176615-2	FLAT WASHER 8MM
615-3	P4176615-3	LEVER M8-1.25
615-4	P4176615-4	HEX NUT M8-1.25
615-5	P4176615-5	SET SCREW M8-1.25 X 20 DOG-PT
615-6	P4176615-6	LOCK WASHER 8MM
618	P4176618	OVER ARM SHAFT
649	P4176649	HANDLE M10-1.5 X 70
690	P4176690	BASE ASSEMBLY
690-1	P4176690-1	BASE
690-2	P4176690-2	FLAT WASHER 8MM
690-3	P4176690-3	LEVER M8-1.25
690-4	P4176690-4	HEX NUT M8-1.25
697A	P4176697A	HANDLE ASSEMBLY
697	P4176697	HAND CRANK
698	P4176698	OVER ARM CONE ASSEMBLY

REF	PART #	DESCRIPTION
698-1	P4176698-1	OVER ARM CONE
698-2	P4176698-2	HEX BOLT M10-1.5 X 50
698-4	P4176698-4	LOCK WASHER 10MM
706	P4176706	ELEVATING SHAFT
710	P4176710	HEX NUT M16-2
715	P4176715	ELEVATING SCREW
716	P4176716	LEADSCREW
718	P4176718	COLUMN CAP ASSEMBLY
718-1	P4176718-1	COLUMN CAP
718-3	P4176718-3	SET SCREW M8-1.25 X 10
723	P4176723	PHLP HD SCR M4-.7 X 35
731	P4176731	SWIVEL CONE ASSEMBLY
731-1	P4176731-1	SWIVEL CONE
731-2	P4176731-2	HEX NUT M16-2
731-3	P4176731-3	LEVER M16-2
732	P4176732	HEX BOLT M10-1.5 X 50
733	P4176733	LOCK WASHER 10MM

