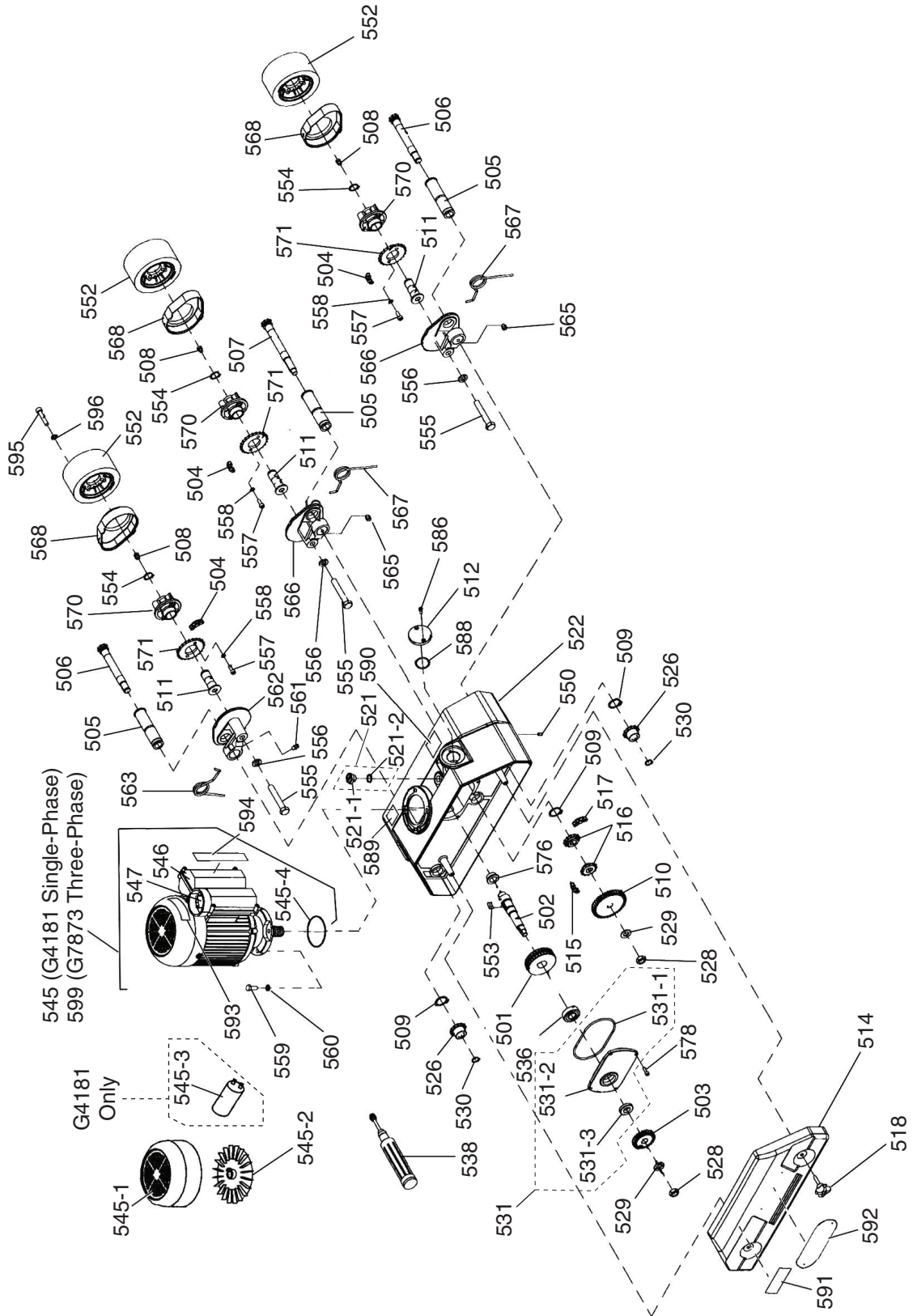


# SECTION 8: PARTS

## Main Breakdown



# Main Parts List

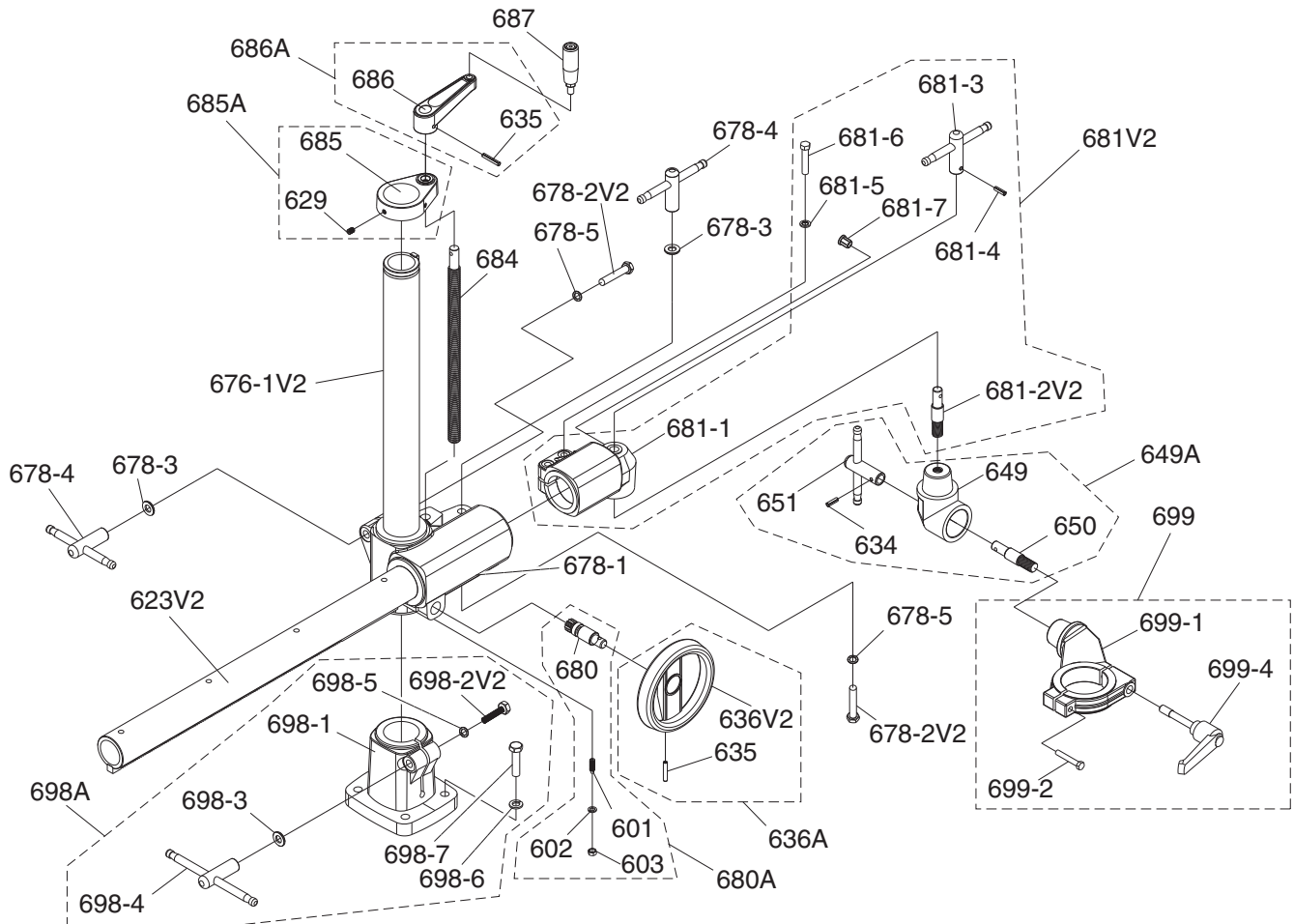
REF	PART #	DESCRIPTION
501	P4181501	WORM GEAR
502	P4181502	BUSHING
503	P4181503	GEAR 25T W/KEY
504	P4181504	CHAIN 26S
505	P4181505	STEEL TUBE
506	P4181506	SPROCKET SHAFT
507	P4181507	SPROCKET SHAFT W/ THREADS
508	P4181508	GREASE NIPPLE
509	P4181509	EXT RETAINING RING 24MM
510	P4181510	GEAR 40T W/KEY
511	P4181511	ROLLER SPINDLE
512	P4181512	CAP
514	P4181514	COVER
515	P4181515	CHAIN 62S
516	P4181516	DOUBLE SPROCKET
517	P4181517	CHAIN 40S
518	P4181518	KNOB
521	P4181521	OIL CAP ASSEMBLY
521-1	P4181521-1	OIL CAP
521-2	P4181521-2	O-RING 14.8 X 2.4 P15
522	P4181522	FRAME
522-1	P4181522-1	FRAME RING
526	P4181526	SPROCKET
528	P4181528	HEX NUT M12-1.75
529	P4181529	FLAT WASHER 12MM
530	P4181530	EXT RETAINING RING 13MM
531	P4181531	WORM GEAR BOX COVER ASSEMBLY
531-1	P4181531-1	O-RING 101.19 X 3.53MM
531-2	P4181531-2	GEAR BOX COVER
531-3	P4181531-3	OIL SEAL
536	P4181536	BALL BEARING 6203ZZ
538	P4181538	GREASE GUN
545	P4181545	MOTOR 1HP 220V 1-PH (G4181)
545-1	P4181545-1	FAN COVER
545-2	P4181545-2	FAN
545-3	P4181545-3	S CAPACITOR 35M 400V

REF	PART #	DESCRIPTION
545-4	P4181545-4	O-RING 69.4 X 3.1 G70
546	P4181546	COMPLETE SWITCH BOX ASSY
547	P4181547	COMPLETE SWITCH ASSY
550	P4181550	SET SCREW M6-1 X 10
552	P4181552	WHEEL
553	P4181553	BUSHING KEY
554	P4181554	EXT RETAINING RING 20MM
555	P4181555	SPROCKET CASE HEX BOLT M12-1.75
556	P4181556	LOCK WASHER 12MM
557	P4181557	CAP SCREW M6-1 X 16
558	P4181558	LOCK WASHER 6MM
559	P4181559	HEX BOLT M8-1.25 X 20
560	P4181560	LOCK WASHER 8MM
561	P4181561	GREASE NIPPLE
562	P4181562	SPROCKET CASE
563	P4181563	TORSION SPRING (B) 3.8 X 102
565	P4181565	GREASE NIPPLE
566	P4181566	SPROCKET CASE
567	P4181567	TORSION SPRING (A) 3.8 X 102
568	P4181568	CASE COVER
570	P4181570	ROLLER SUPPORT
571	P4181571	SPROCKET
576	P4181576	BUSHING
578	P4181578	CAP SCREW M5-.8 X 16
586	P4181586	CAP SCREW M5-.8 X 10
588	P4181588	O-RING 27.5 X 2.0 S28
589	P4181589	QC LABEL
590	P4181590	GENERAL WARNING LABEL
591	P4181591	COVER WARNING LABEL
592	P4181592	GRIZZLY LOGO PLATE
593	P4181593	SWITCH DIRECTION LABEL
594	P4181594	ELECTRICITY LABEL
595	P4181595	CAP SCREW M5-.8 X 20
596	P4181596	LOCK WASHER 5MM
599	P7873599	MOTOR 1HP 220V 3-PH (G7873)

**Please Note:** We do our best to stock replacement parts whenever possible, but we cannot guarantee that all parts shown here are available for purchase. Call (800) 523-4777 or visit our online parts store at [www.grizzly.com](http://www.grizzly.com) to check for availability.



# Base Breakdown



REF	PART #	DESCRIPTION
601	P4181601	SET SCREW M8-1.25 X 20
602	P4181602	LOCK WASHER 8MM
603	P4181603	HEX NUT M8-1.25
623V2	P4181623V2	OVER ARM 720MM V2.12.13
629	P4181629	SET SCREW M8-1.25 X 12
634	P4181634	ROLL PIN 6 x 22
635	P4181635	ROLL PIN 6 x 36
636A	P4181636A	HANDWHEEL ASSEMBLY
636V2	P4181636V2	HANDWHEEL W/O HANDLE V2.12.13
649A	P4181649A	SWIVEL CONE ASSEMBLY
649	P4181649	SWIVEL CONE
650	P4181650	MOTOR CLAMP CONNECTOR
651	P4181651	T-HANDLE
676-1V2	P4181676-1V2	VERTICAL COLUMN 560MM V2.12.13
678-1	P4181678-1	ELEVATING BRACKET
678-2V2	P4181678-2V2	HEX BOLT M12-1.75 X 75
678-3	P4181678-3	FLAT WASHER 12MM
678-4	P4181678-4	T-HANDLE W/THREADS
678-5	P4181678-5	INT TOOTH WASHER 12MM
680A	P4181680A	PINION ASSEMBLY
680	P4181680	PINION
681V2	P4181681V2	OVER ARM CONE ASSY V2.12.13
681-1	P4181681-1	OVER ARM CONE
681-2V2	P4181681-2V2	STANDOFF-HEX V2.12.13

REF	PART #	DESCRIPTION
681-3	P4181681-3	T-HANDLE W/HOLE FOR PIN
681-4	P4181681-4	ROLL PIN 6 X 22
681-5	P4181681-5	FLAT WASHER 10MM
681-6	P4181681-6	HEX BOLT M10-1.5 X 50
681-7	P4181681-7	STRAIN RELIEF
684	P4181684	ELEVATING SCREW M19-4 X 380
685A	P4181685A	COLUMN CAP ASSEMBLY
685	P4181685	COLUMN CAP
686A	P4181686A	CRANK ASSEMBLY
686	P4181686	CRANK
687	P4181687	HANDLE M10-1.5 X 70
698A	P4181698A	COLUMN BASE ASSEMBLY
698-1	P4181698-1	COLUMN BASE
698-2V2	P4181698-2V2	HEX BOLT M12-1.75 X 75
698-3	P4181698-3	FLAT WASHER 12MM
698-4	P4181698-4	T-HANDLE W/THREADS
698-5	P4181698-5	INT TOOTH WASHER 12MM
698-6	P4181698-6	LOCK WASHER 12MM
698-7	P4181698-7	HEX BOLT M12-1.75 X 50
699	P4181699	MOTOR CLAMP ASSEMBLY
699-1	P4181699-1	MOTOR CLAMP
699-2	P4181699-2	HEX BOLT M8-1.25 X 50
699-4	P4181699-4	LEVER

