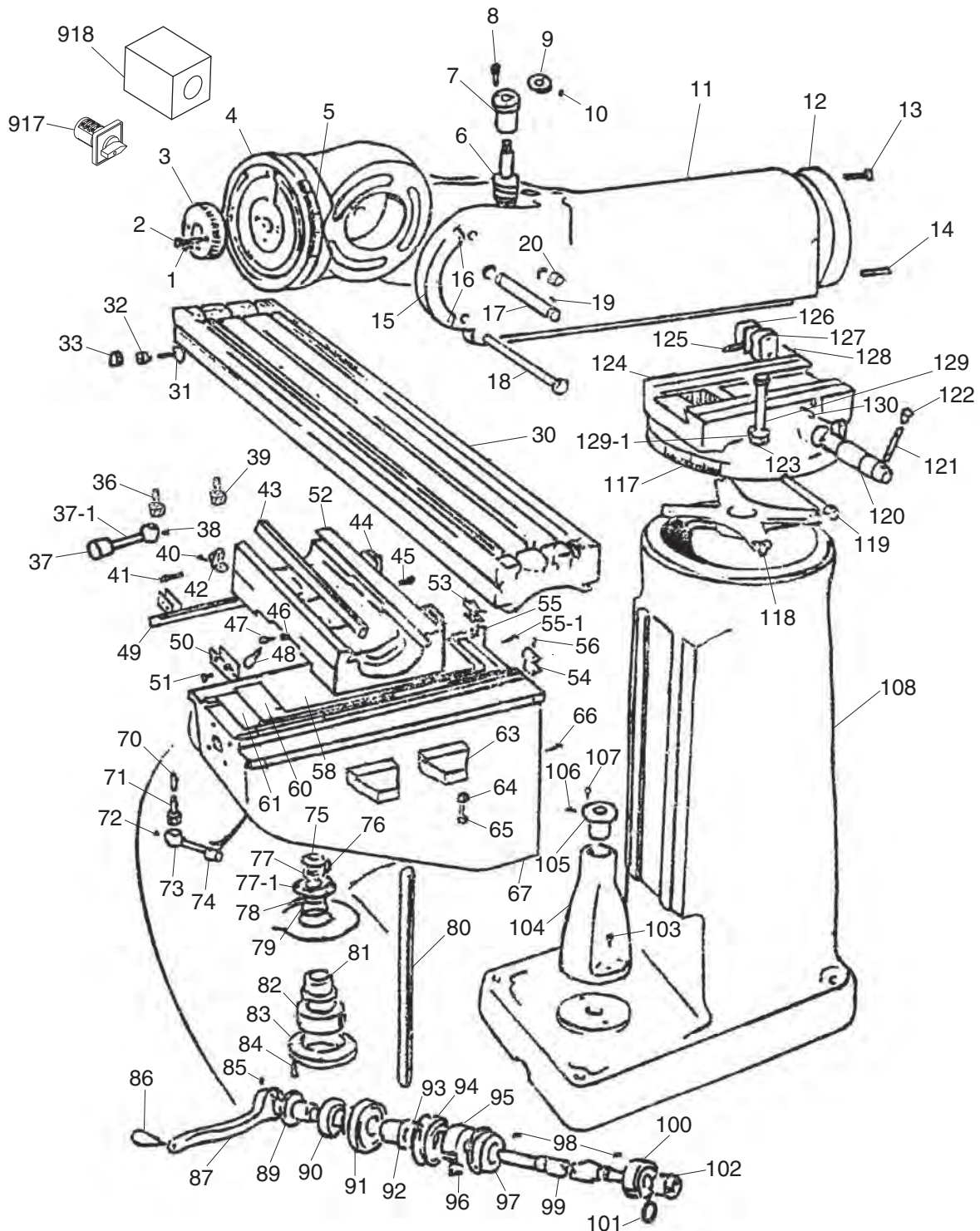


SECTION 9: PARTS

Body Assembly Breakdown



Body Assembly Parts List

REF	PART #	DESCRIPTION
1	P9901001	TAPERED PIN 8 X 50
2	P9901002	CAP SCREW M10-1.5 X 35
3	P9901003	WORM GEAR 20T
4	P9901004	RAM ADAPTER
5	P9901005	GRADUATED SCALE
6	P9901006	WORM GEAR
7	P9901007	FLANGE
8	P9901008	CAP SCREW M6-1 X 16
9	P9901009	RETAINING RING
10	P9901010	TAPERED SET SCREW M5-.8 X 10
11	P9901011	RAM
12	P9901012	TURRET
13	P9901013	CAP SCREW M8-1.25 X 20
14	P9901014	TAPER PIN 8 X 30
15	P9901015	GRADUATED SCALE
16	P9901016	RIVET 2 X 5
17	P9901017	SHAFT
18	P9901018	HEX BOLT M16-2 X 200
19	P9901019	KEY 5 X 5 X 12
20	P9901020	CLAMPING SLEEVE
30	P9902030	TABLE (G9902/G9903)
30	P9902030	TABLE (G9902/G9903)
31	P9901031	T-SLOT BOLT M8-1.25 X 35
32	P9901032	TABLE STOP
33	P9901033	HEX NUT M8-1.25
36	P9901036	CAP SCREW M12-1.75 X 20
37	P9901037	HANDLE KNOB
37-1	P9901037-1	HANDLE BOLT M8-1.25 X 25
38	P9901038	SET SCREW M6-1 X 8
39	P9901039	CAP SCREW M12-1.75 X 18
40	P9901040	CAP SCREW M8-1.25 X 16
41	P9901041	GIB SCREW M8-1.25 X 27
42	P9901042	TABLE STOP BRACKET
43	P9901043	LONGITUDINAL GIB (G9901)
43	P9902043	LONGITUDINAL GIB (GG902/G9903)
44	P9901044	WIPER
45	P9901045	SPECIAL PIN
46	P9901046	LOCKING PIN
47	P9901047	LOCKING SCREW M12-1.75 X 15
48	P9901048	LOCKING LEVER
49	P9901049	CROSS GIB
50	P9901050	WIPER HOLDER
51	P9901051	PHLP HD SCR M5-.8 X 8
52	P9901052	SADDLE
53	P9901053	WIPER HOLDER

REF	PART #	DESCRIPTION
54	P9901054	WIPER
55	P9901055	VERTICAL GIB
55-1	P9901055-1	GIB SCREW M8-1.25 X 40
56	P9901056	PHLP HD SCR M6-1 X 12
58	P9901058	SMALL CHIP GUARD
60	P9901060	MEDIUM CHIP GUARD
61	P9901061	LARGE CHIP GUARD
63	P9901063	CLAMPING PLATE
64	P9901064	HEX NUT M6-1
65	P9901065	SET SCREW M6-1 X 20
66	P9901066	CAP SCREW M8-1.25 X 14
67	P9901067	KNEE
70	P9901070	LOCK PIN
71	P9901071	PHLP HD SCR M12-1.75 X 40
72	P9901072	SET SCREW M6-1 X 8
73	P9901073	LEVER HUB
74	P9901074	LEVER BOLT M8-1.25 X 25
75	P9901075	HEX NUT M12-1.75
76	P9901076	KEY 5 X 5 X 20
77	P9901077	LOCK WASHER 12MM
77-1	P9901077-1	FLAT WASHER 12MM
78	P9901078	SPECIAL BEVEL GEAR
79	P9901079	SPECIAL WASHER
80	P9901080	VERTICAL LEAD SCREW
81	P9901081	BUSHING
82	P9901082	BALL BEARING 6206 2 RS
83	P9901083	BEARING RETAINER RING
84	P9901084	CAP SCREW M8-1.25 X 14
85	P9901085	SET SCREW M6-1 X 8
86	P9901086	HANDLE KNOB
87	P9901087	HANDLE
89	P9901089	CLUTCH
90	P9901090	SPECIAL NUT M33 X 1.5
91	P9901091	GRADUATED DIAL
92	P9901092	BUSHING
93	P9901093	INT RETAINING RING 47MM
94	P9901094	REGULATING RING
95	P9901095	BALL BEARING 62042RZ
96	P9901096	CAP SCREW M6-1 X 16
97	P9901097	BEARING COVER
98	P9901098	KEY 5 X 5 X 16
99	P9901099	SHAFT
100	P9901100	BALL BEARING 62042RZ
101	P9901101	SPECIAL WASHER
102	P9901102	SPIRAL BEVEL GEAR



REF	PART #	DESCRIPTION
103	P9901103	CAP SCREW M10-1.5 X 25
104	P9901104	KNEE SUPPORT
105	P9901105	THREADED BUSHING
106	P9901106	OIL CUP 6MM
107	P9901107	CAP SCREW M8-1.25 X 14
108	P9901108	COLUMN
117	P9901117	GRADUATED SCALE
118	P9901118	SPIDER GEAR
119	P9901119	SPECIAL BOLT M12-1.75 X 120
120	P9901120	GEAR SHAFT
121	P9901121	LEVER
122	P9901122	LEVER KNOB

REF	PART #	DESCRIPTION
123	P9901123	FLAT WASHER 12MM
124	P9901124	ROTARY DISC
125	P9901125	KEY 6 X 10 X 70
126	P9901126	CLAMPING BLOCK
127	P9901127	CLAMPING BLOCK
128	P9901128	ROLL PIN 3 X 50
129	P9901129	SPECIAL BOLT M12-1.75 X 110
129-1	P9901129-1	HEX NUT M12-1.75
130	P9901130	SET SCREW M8-1.25 X 16
917	P9901917	FORWARD/REVERSE SWITCH
918	P9901918	SWITCH BOX



Table Assembly Breakdown

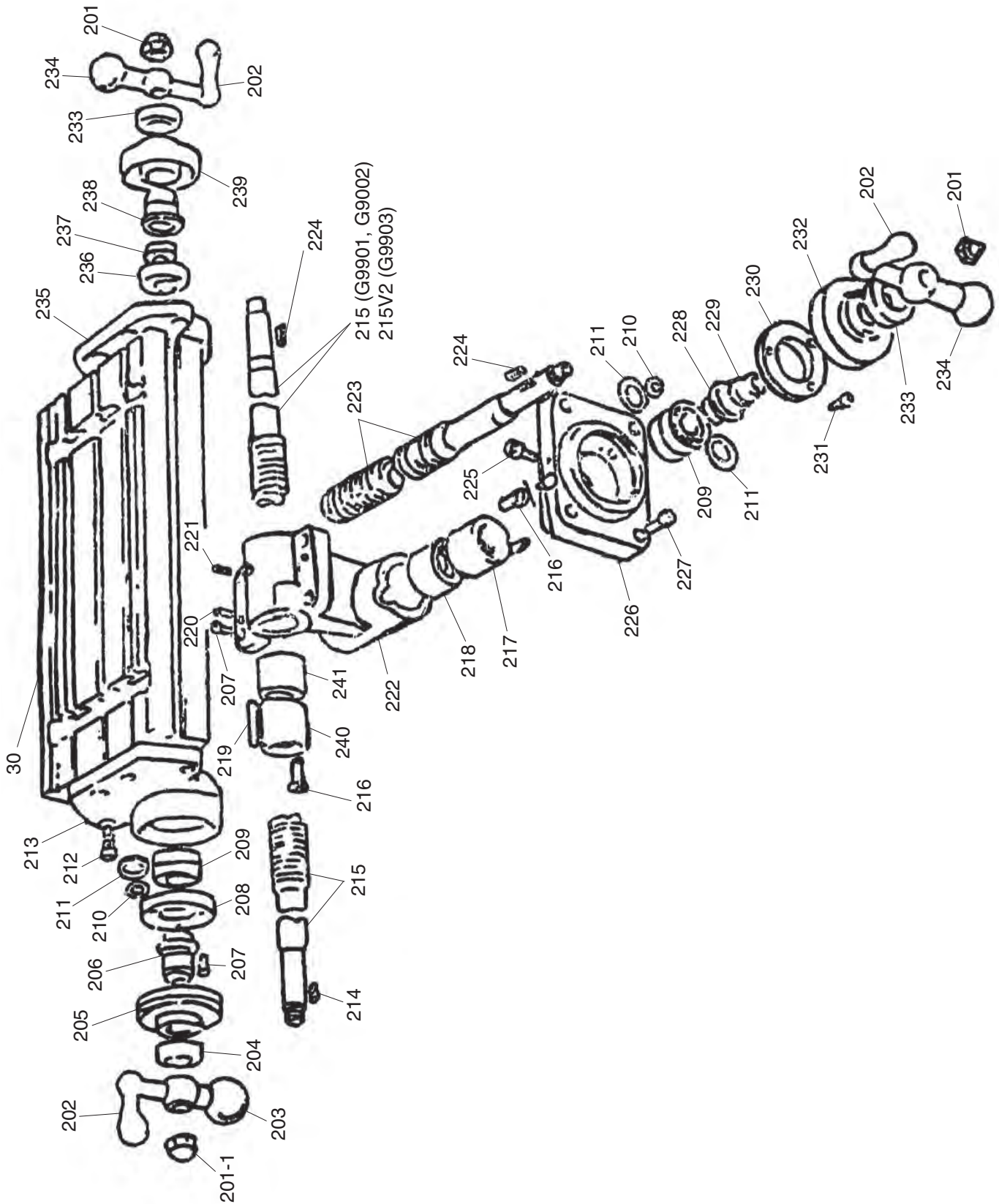


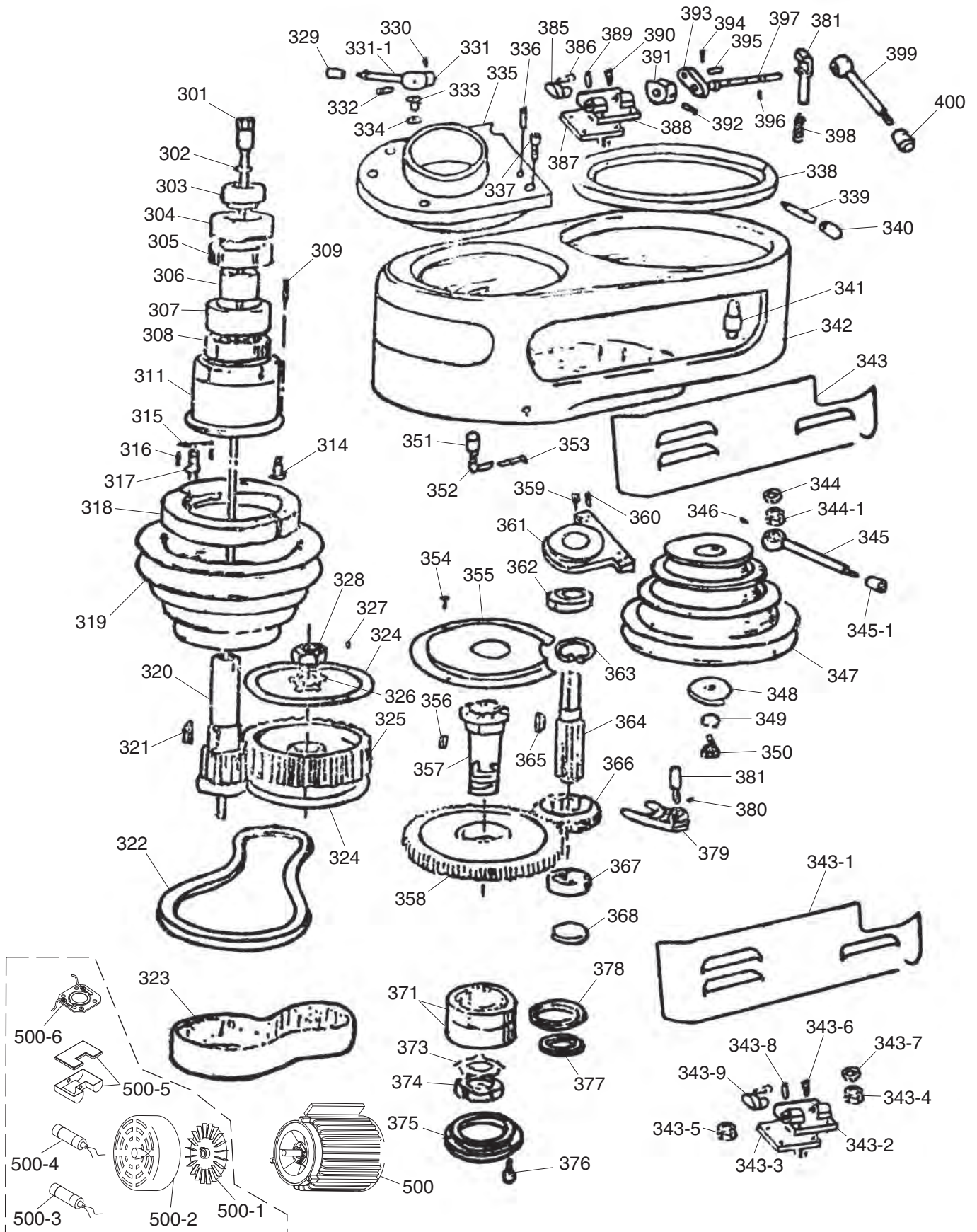
Table Assembly Parts List

REF	PART #	DESCRIPTION
30	P9901030	TABLE (G9901)
30	P9902030	TABLE (G9902/G9903)
201	P9901201	ACORN NUT 1/2-13
201-1	P9901201-1	ACORN NUT 5/8-11
202	P9901202	HANDLE
203	P9901203	HANDLE BODY
204	P9901204	SPECIAL NUT M33 X 1.5
205	P9901205	GRADUATED DIAL
206	P9901206	BUSHING
207	P9901207	CAP SCREW M8-1.25 X 16
208	P9901208	FLANGE
209	P9901209	BALL BEARING 62042RZ
210	P9901210	SPACER
211	P9901211	SPACER
212	P9901212	CAP SCREW M10-1.5 X 20
213	P9901213	LEFT TABLE BRACKET
214	P9901214	KEY 4 X 4 X 30
215	P9901215	LONG. LEAD SCREW (G9901)
215	P9902215	LONG. LEAD SCREW (G9902)
215V2	P9903215V2	LONG. LEAD SCREW (G9903)
216	P9901216	ADJUSTING SCREW M8-1.25 X 24
217	P9901217	THREADED BUSHING 1-1/4-7
218	P9901218	THREADED BUSHING 1-1/4-7

REF	PART #	DESCRIPTION
219	P9901219	KEY 5 X 5 X 30
220	P9901220	THREADED CONICAL PIN 8 X 30
221	P9901221	SET SCREW M8-1.25 X 12
222	P9901222	CROSS LEAD BRACKET
223	P9901223	CROSS LEAD SCREW
224	P9901224	WOODRUFF KEY
225	P9901225	CAP SCREW M4-.7 X 8
226	P9901226	BEARING BRACKET
227	P9901227	CAP SCREW M10-1.5 X 16
228	P9901228	BUSHING
229	P9901229	BUSHING
230	P9901230	BEARING RETAINER RING
231	P9901231	CAP SCREW M8-1.25 X 14
232	P9901232	GRADUATED DIAL
233	P9901233	SPECIAL NUT M33 X 1.5
234	P9901234	HANDLE BODY
235	P9901235	RIGHT TABLE BRACKET
236	P9901236	BALL BEARING 62042RZ
237	P9901237	SPACER
238	P9901238	BUSHING
239	P9901239	GRADUATED DIAL
240	P9901240	NUT 1-1/4"
241	P9901241	NUT 1-1/4"



Model G9901/G9902 Drive Assembly Breakdown



Model G9901/G9902 Drive Assembly Parts List

REF	PART #	DESCRIPTION
301	P9901301	DRAWBAR 24-3/16
302	P9901302	DRAWBAR SPACER
303	P9901303	SPECIAL NUT M33 X 1.5
304	P9901304	SPECIAL NUT M60 X 1.5
305	P9901305	BALL BEARING 7007-OPEN-P5
306	P9901306	SPACER
307	P9901307	SPACER
308	P9901308	BALL BEARING 6007-2RS
309	P9901309	SPRING
311	P9901311	BEARING BRACKET
314	P9901314	CAP SCREW M8-1.25 X 12
315	P9901315	SPRING
316	P9901316	ROLL PIN 2.5 X 16
317	P9901317	BRAKE LOCK STUD
318	P9901318	BRAKE SHOE
319	P9901319	SPINDLE PULLEY
320	P9901320	COUPLING SHAFT
321	P9901321	KEY 8 X 8 X 25
322	P9901322	V-BELT A-32 4L320
323	P9901323	RIBBED TIMING BELT
324	P9901324	PULLEY FLANGE
325	P9901325	TIMING BELT PULLEY
326	P9901326	TABBED LOCK WASHER 16MM
327	P9901327	SET SCREW M5-.8 X 8
328	P9901328	FLANGE NUT M16-1.5
329	P9901329	HANDLE KNOB
330	P9901330	SET SCREW M3-.5 X 5
331	P9901331	HANDLE HUB
331-1	P9901331-1	HANDLE
332	P9901332	PIN
333	P9901333	BUSHING
334	P9901334	SPECIAL WASHER
335	P9901335	TRANSMISSION COVER PLATE
336	P9901336	TAPERED PIN 10 X 30
337	P9901337	CAP SCREW M10-1.5 X 16
338	P9901338	MOTOR RING
339	P9901339	HANDLE
340	P9901340	HANDLE KNOB
341	P9901341	STUD M12-1.75 X 35
342	P9901342	BELT HOUSING
343	P9901343	RIGHT BELT COVER
343-1	P9901343-1	LEFT BELT COVER
343-2	P9901343-2	SPRING PLATE
343-3	P9901343-3	BRACKET
343-4	P9901343-4	HEX NUT M5-.8

REF	PART #	DESCRIPTION
343-5	P9901343-5	HEX NUT M6-1
343-6	P9901343-6	CAP SCREW M5-.8 X 16
343-7	P9901343-7	LOCK WASHER 5MM
343-8	P9901343-8	ROLL PIN 4 X 16
343-9	P9901343-9	HOLDER M6-1 X 20
344	P9901344	FLAT WASHER 12MM
344-1	P9901344-1	THICK HEX NUT M12 X 1.75
345	P9901345	HANDLE
345-1	P9901345-1	HANDLE KNOB
346	P9901346	SET SCREW M6-1 X 8
347	P9901347	MOTOR PULLEY
348	P9901348	SPECIAL WASHER
349	P9901349	INT RETAINING RING 8MM
350	P9901350	HEX BOLT M8-1.25 X 25
351	P9901351	COTTON CORE TYPE OIL CAP
352	P9901352	OIL CUP ADAPTER
353	P9901353	COPPER TUBE
354	P9901354	PHLP HD SCR M6-1 X 10
355	P9901355	COVER
356	P9901356	KEY 8 X 8 X 16
357	P9901357	WORM COUPLING SHAFT
358	P9901358	BULL GEAR
359	P9901359	CAP SCREW M6-1 X 16
360	P9901360	THREADED CONICAL PIN 8 X 25
361	P9901361	BEARING BRACKET
362	P9901362	BALL BEARING 6203ZZ
363	P9901363	INT RETAINING RING 40MM
364	P9901364	SPLINE SHAFT
365	P9901365	WOODRUFF KEY 5 X 16
366	P9901366	PINION
367	P9901367	BALL BEARING 6203ZZ
368	P9901368	PLUG
371	P9901371	THRUST BEARING 40 X 68 X 15
373	P9901373	TABBED LOCK WASHER 39MM
374	P9901374	FLANGE NUT M39-1.5
375	P9901375	COVER
376	P9901376	CAP SCREW M6-1 X 12
377	P9901377	FLANGE RING SMALL
378	P9901378	FLANGE RING LARGE
379	P9901379	SHIFTER FORK
380	P9901380	ROLL PIN 3 X 25
381	P9901381	CONNECTING BAR
385	P9901385	BRACKET
386	P9901386	CAP SCREW M5-.8 X 8
387	P9901387	SHIM

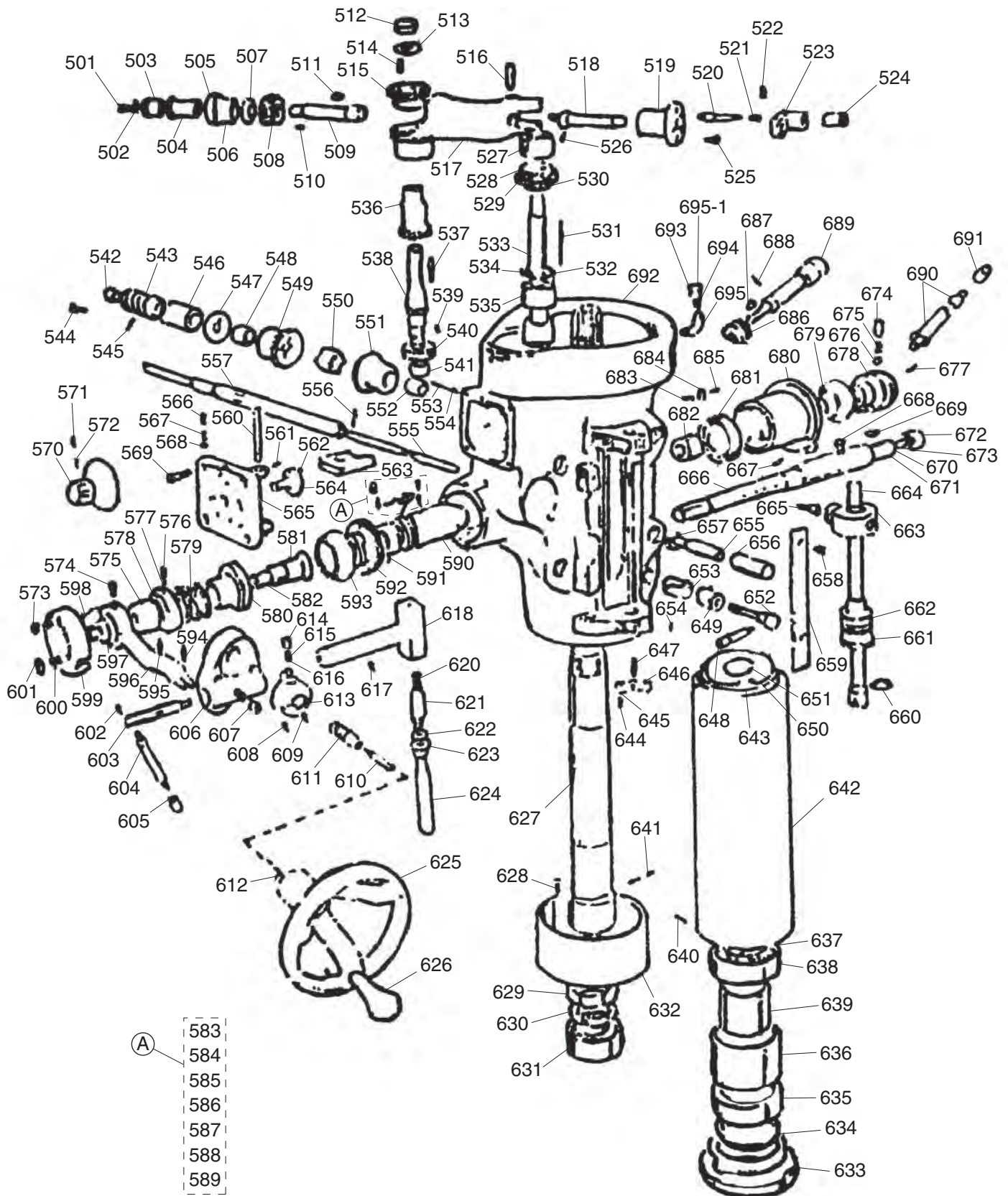


REF	PART #	DESCRIPTION
388	P9901388	SHAFT BRACKET
389	P9901389	TAPERED PIN 8 X 25
390	P9901390	CAP SCREW M8-1.25 X 16
391	P9901391	LEVER BRACKET
392	P9901392	ROLL PIN 4 X 32
393	P9901393	ECCENTRIC BLOCK
394	P9901394	CONICAL PIN
395	P9901395	PIN
396	P9901396	ROLL PIN 4 X 25
397	P9901397	SPANNER SHAFT

REF	PART #	DESCRIPTION
398	P9901398	SPRING
399	P9901399	HANDLE
400	P9901400	HANDLE KNOB
500	P9901500	MOTOR 2HP,110/220V,1-PH
500-1	P9901500-1	MOTOR FAN
500-2	P9901500-2	MOTOR FAN COVER
500-3	P9901500-3	S. CAP CD60,150MFD,265VAC
500-4	P9901500-4	R. CAP CBB60,20MFD,450VAC
500-5	P9901500-5	WIRING/CAPACITOR JUNCTION BOX
500-6	P9901500-6	TERMINAL BOARD



Headstock Breakdown



Headstock Parts List

REF	PART #	DESCRIPTION
501	P9901501	HEX NUT M6-1
502	P9901502	LOCK WASHER 6MM
503	P9901503	BEVEL GEAR
504	P9901504	BUSHING
505	P9901505	BUSHING
506	P9901506	SET SCREW M5-.8 X 8
507	P9901507	WORM GEAR SPACER
508	P9901508	WORM GEAR
509	P9901509	SHAFT
510	P9901510	KEY 3 X 3 X 12
511	P9901511	KEY 3 X 3 X 16
512	P9901512	HEX NUT M8-1.25
513	P9901513	FLAT WASHER 8MM
514	P9901514	KEY 3 X 3 X 12
515	P9901515	BEVEL GEAR
516	P9901516	FEED ENGAGE PIN
517	P9901517	WORM GEAR SUPPORT
518	P9901518	SHAFT
519	P9901519	FLANGE
520	P9901520	PLUNGER
521	P9901521	SPRING
522	P9901522	ROLL PIN 3 X 20
523	P9901523	SHIFTER CRANK
524	P9901524	TAPERED KNOB M6 X 20
525	P9901525	CAP SCREW M5-.8 X 12
526	P9901526	SET SCREW M6-1 X 8
527	P9901527	BUSHING
528	P9901528	GEAR
529	P9901529	GEAR
530	P9901530	GEAR
531	P9901531	KEY 3 X 3 X 40
532	P9901532	SET SCREW M6-1 X 8
533	P9901533	BEVEL GEAR SHAFT
534	P9901534	EXT RETAINING RING 14MM
535	P9901535	BUSHING
536	P9901536	GEAR
537	P9901537	KEY 3 X 3 X 20
538	P9901538	GEAR SHAFT
539	P9901539	KEY 3 X 3 X 8
540	P9901540	GEAR
541	P9901541	BUSHING
542	P9901542	BUSHING
543	P9901543	WORM GEAR
544	P9901544	CAP SCREW M6-1 X 15
545	P9901545	ROLL PIN 3 X 16
546	P9901546	BUSHING
547	P9901547	SPECIAL WASHER
548	P9901548	SLEEVE
549	P9901549	BEVEL GEAR
550	P9901550	REVERSE CLUTCH

REF	PART #	DESCRIPTION
551	P9901551	BEVEL GEAR
552	P9901552	BUSHING
553	P9901553	SET SCREW M6-1 X 10
554	P9901554	SET SCREW M6-1 X 8
555	P9901555	SLIDE ROD
556	P9901556	ROLL PIN 3 X 22
557	P9901557	HOLLOW SHAFT
560	P9901560	SMALL SHAFT
561	P9901561	SET SCREW M5-.8 X 6
562	P9901562	PIN
563	P9901563	SLIDE
564	P9901564	ECCENTRIC WHEEL
565	P9901565	CLUSTER GEAR COVER
566	P9901566	SET SCREW M8-1.25 X 18
567	P9901567	COMPRESSION SPRING
568	P9901568	STEEL BALL 3/16"
569	P9901569	CAP SCREW M5-.8 X 16
570	P9901570	DIAL KNOB
571	P9901571	SET SCREW M5-.8 X 6
572	P9901572	SET SCREW M5-.8 X 6
573	P9901573	CAP SCREW M5-.8 X 40
574	P9901574	THREAD PIN
575	P9901575	SLEEVE
576	P9901576	SET SCREW M6-1 X 8
577	P9901577	PLUG 4X2
578	P9901578	SPECIAL NUT M22 X 1.5
579	P9901579	SPRING
580	P9901580	CLUTCH
581	P9901581	COUPLING SHAFT
582	P9901582	KEY
583	P9901583	PHLP HD SCR M4-.7 X 16
584	P9901584	LOCK WASHER 4MM
585	P9901585	SET SCREW M6-1 X 12
586	P9901586	SET SCREW M6-1 X 12
587	P9901587	ADJUSTING WASHER
588	P9901588	COMPRESSION SPRING
589	P9901589	TOP PIN
590	P9901590	SLEEVE
591	P9901591	THRUST BEARING 15 X 28 X 9
592	P9901592	FEED WORM GEAR
593	P9901593	CLUTCH
594	P9901594	ROLL PIN 5 X 16
595	P9901595	ROLL PIN 4 X 20
596	P9901596	CONNECTING ROD
597	P9901597	SPECIAL WASHER 10MM
598	P9901598	EXT RETAINING RING 10MM
599	P9901599	COVER
600	P9901600	SET SCREW M6-1 X 14
601	P9901601	HEX NUT M6-1
602	P9901602	ROLL PIN 5 X 20

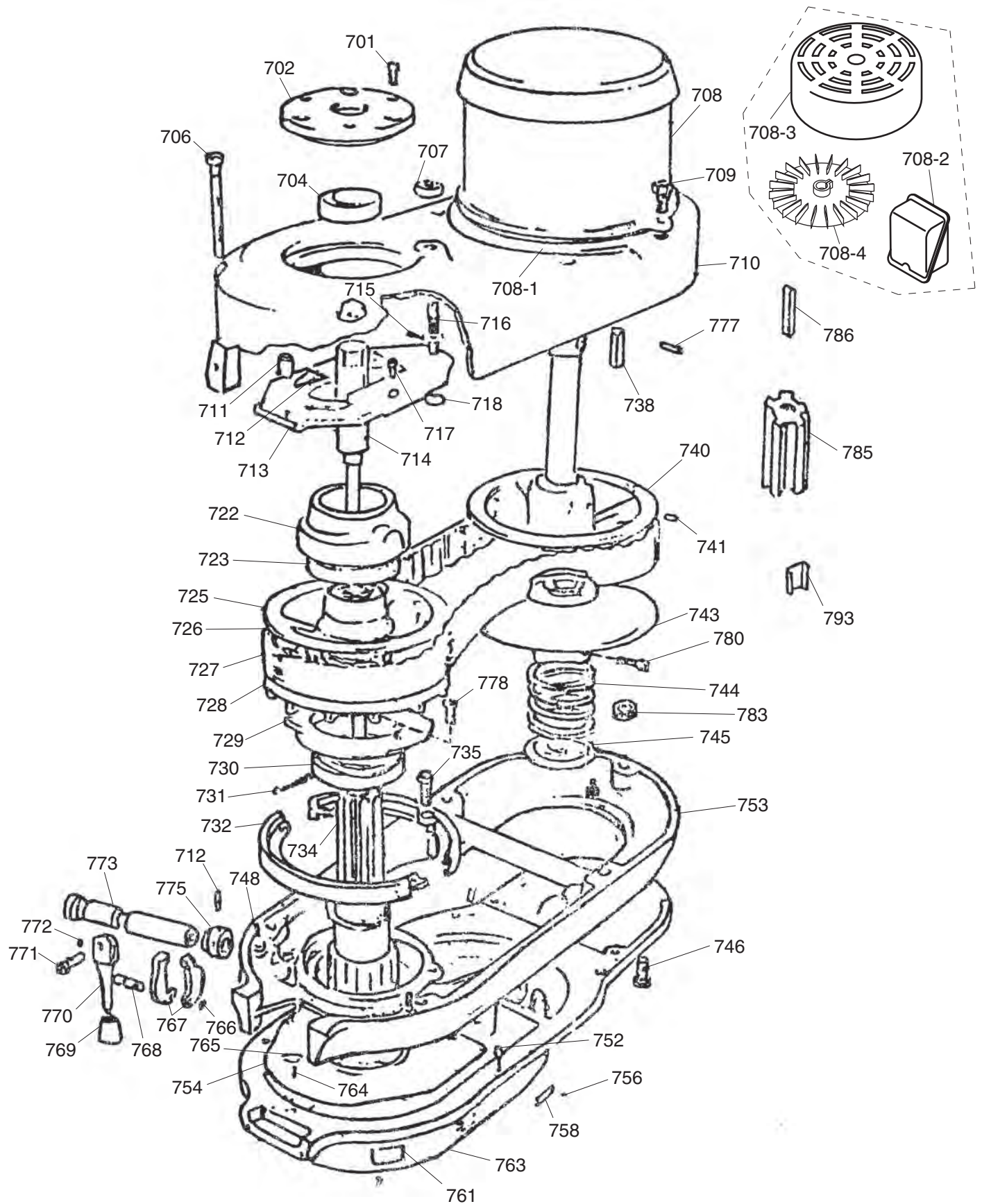


REF	PART #	DESCRIPTION
603	P9901603	LEVER
604	P9901604	HANDLE
605	P9901605	HANDLE KNOB
606	P9901606	BRACKET
607	P9901607	CAP SCREW 5/8-11 X 2-1/2
608	P9901608	SET SCREW M6-1 X 8
609	P9901609	KEY 4 X 4 X 8
610	P9901610	FEED REVERSE KNOB STUD
611	P9901611	REVERSE KNOB
612	P9901612	PIN
613	P9901613	RETAINING RING
614	P9901614	STEEL BALL 3/16"
615	P9901615	SPRING
616	P9901616	SET SCREW M8-1.25 X 10
617	P9901617	ROLL PIN 4 X 16
618	P9901618	T-ROD
620	P9901620	SPRING 1.2 X 10 X 25
621	P9901621	SHAFT
622	P9901622	BUSHING
623	P9901623	BUSHING
624	P9901624	PLUNGER
625	P9901625	HANDWHEEL
626	P9901626	HANDWHEEL HANDLE
627	P9901627	SPINDLE
628	P9901628	CAP SCREW M5-.8 X 12
629	P9901629	LOCK NUT
630	P9901630	LOCK NUT
631	P9901631	BALL BEARING 6206 2 RS
632	P9901632	QUILL SKIRT
633	P9901633	NOSE PIECE
634	P9901634	SPINDLE DIRT SHIELD
635	P9901635	THRUST BEARING 40 X 60 X 15
636	P9901636	BEARING SLEEVE
637	P9901637	BEARING SLEEVE
638	P9901638	THRUST BEARING 40 X 60 X 15
639	P9901639	ADJUSTING NUT M39 X 1.5
640	P9901640	SET SCREW M5-.8 X 6
641	P9901641	DOG POINT SET SCREW M5-.8 X 6
642	P9901642	QUILL
643	P9901643	OIL SEALER
644	P9901644	HEX NUT M3-.5
645	P9901645	SET SCREW M3-.5 X 14
646	P9901646	FORKED ROD
647	P9901647	THREAD PIN
648	P9901648	CAP SCREW M4-.7 X 8
649	P9901649	THREADED BUSHING
650	P9901650	RETAINING PLATE

REF	PART #	DESCRIPTION
651	P9901651	EXT RETAINING RING 65MM
652	P9901652	QUILL LOCK BOLT M8-1.25 X 70
653	P9901653	LOCK SLEEVE
654	P9901654	SPECIAL SCREW M6-1 X 8
655	P9901655	T-SLOT BOLT M12-1.75 X 175
656	P9901656	SLEEVE
657	P9901657	HEX NUT M12-1.75
658	P9901658	PHLP HD SCR M4-.7 X 6
659	P9901659	SCALE
660	P9901660	EXT RETAINING RING 15MM
661	P9901661	ADJUSTING NUT
662	P9901662	DIAL
663	P9901663	STOP KNOB
664	P9901664	QUILL LEAD SCREW
665	P9901665	CAP SCREW M10-1.5 X 16
666	P9901666	SHAFT
667	P9901667	KEY 5 X 5 X 20
668	P9901668	SET SCREW M8-1.25 X 10
669	P9901669	PIN
670	P9901670	ROLL PIN 5 X 16
671	P9901671	KEY 5 X 5 X 20
672	P9901672	HEX BOLT M4-.7 X 16
673	P9901673	STOP PLATE
674	P9901674	SET SCREW M8-1.25 X 14
675	P9901675	SPRING
676	P9901676	STEEL BALL 3/16"
677	P9901677	SET SCREW M4-.7 X 16
678	P9901678	HANDLE HUB
679	P9901679	BUSHING
680	P9901680	BUSHING
681	P9901681	COILED SPRING
682	P9901682	GEAR
683	P9901683	LEVER
684	P9901684	SHAFT
685	P9901685	SET SCREW M8-1.25 X 8
686	P9901686	WORM GEAR
687	P9901687	KEY 4 X 4 X 16
688	P9901688	SET SCREW M5-.8 X 6
689	P9901689	SHAFT
690	P9901690	HANDLE
691	P9901691	HANDLE KNOB
692	P9901692	HEADSTOCK
693	P9901693	OIL CUP ADAPTER
694	P9901694	OIL CUP
695	P9901695	TUBING
695-1	P9901695-1	COTTON WIRE



Model G9903 Upper Drive System Breakdown



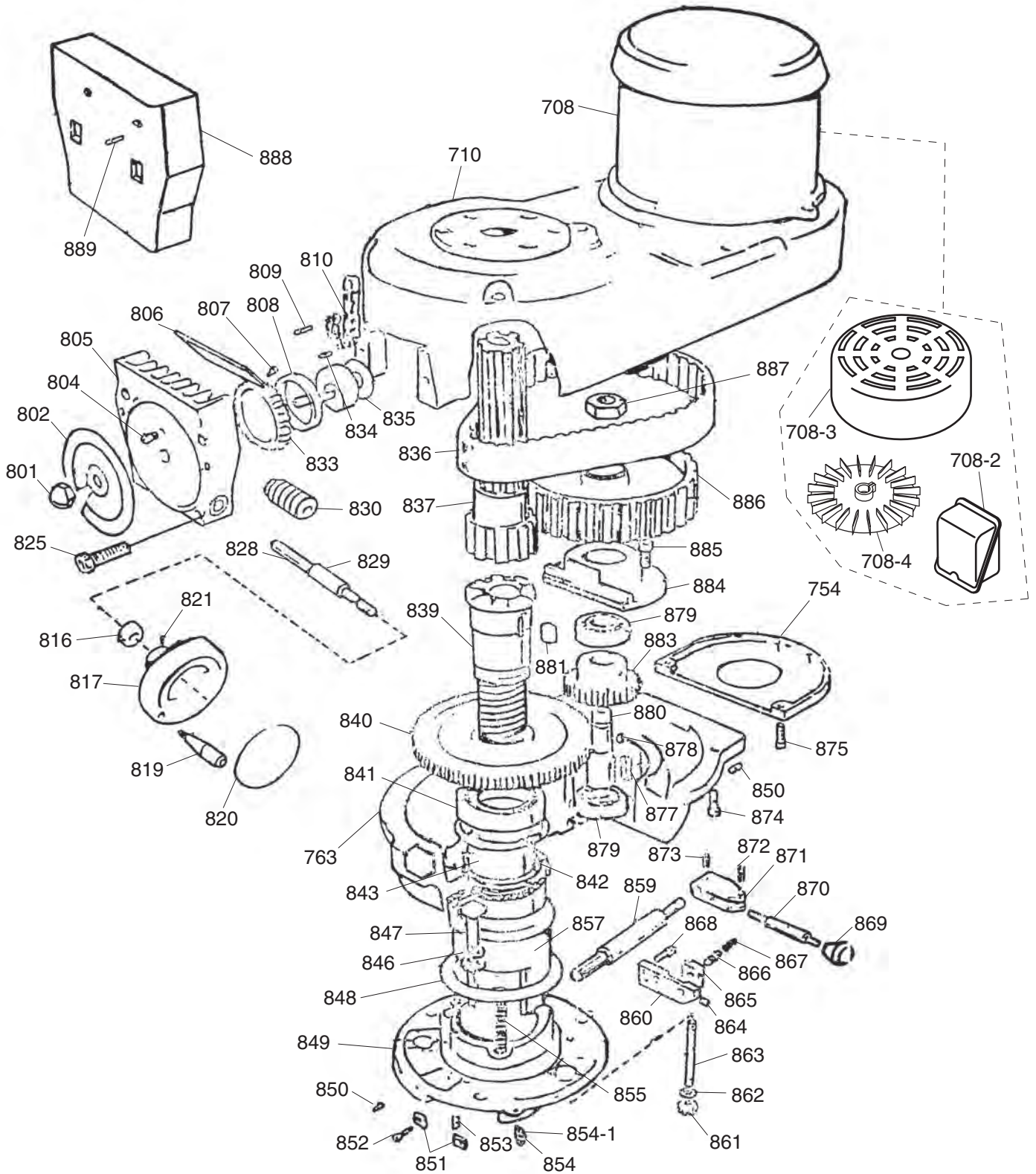
Model G9903 Upper Drive System Breakdown

REF	PART #	DESCRIPTION
701	P9903701	CAP SCREW M6-1 X 16
702	P9903702	BEARING CAP
704	P9903704	BALL BEARING 6007ZZ
706	P9903706	CAP SCREW M8-1.25 X 150
707	P9903707	HEX NUT M10-1.5
708	P9903708	MOTOR 2HP, 220V,3-PH
708-1	P9903708-1	MOTOR MOUNT PLATE
708-2	P9903708-2	MOTOR WIRING JUNCTION BOX
708-3	P9903708-3	MOTOR FAN COVER
708-4	P9903708-4	MOTOR FAN
709	P9903709	HEX BOLT M10-1.5 X 25
710	P9903710	UPPER HOUSING
711	P9903711	SHAFT
712	P9903712	ROLL PIN 4 X 25
713	P9903713	CLAMPING PLATE
714	P9903714	DRAWBAR
715	P9903715	ROLL PIN 3 X 20
716	P9903716	SHAFT
717	P9903717	PHLP HD SCR M4-.7 X 20
718	P9903718	FLAT WASHER 4MM
722	P9903722	BEARING SLIDING HOUSING
723	P9903723	BALL BEARING 6010-2RS
725	P9903725	PULLEY
726	P9903726	RETAINING RING 38MM
727	P9903727	VARIABLE SPEED BELT
728	P9903728	PULLEY
729	P9903729	BEARING CAP
730	P9903730	BALL BEARING 6010-2RS
731	P9903731	BRAKE SPRING
732	P9903732	BRAKE SHOE
734	P9903734	UPPER COUPLING SHAFT
735	P9903735	SET SCREW M6-1 X 10
738	P9903738	KEY 8 X 8 X 25

REF	PART #	DESCRIPTION
740	P9903740	UPPER PULLEY HALF
741	P9903741	SET SCREW M6-1 X 10
743	P9903743	LOWER PULLEY HALF
744	P9903744	COMPRESSION SPRING
745	P9903745	SPRING COLLAR
746	P9903746	CAP SCREW M5-.8 X 25
748	P9903748	CAP SCREW M8-1.25 X 20
752	P9903752	TAPER PIN 8 X 30
753	P9903753	MIDDLE HOUSING
754	P9903754	LOWER COVER
756	P9903756	RIVET C2 X 5
758	P9903758	NAMEPLATE
761	P9903761	NAMEPLATE
763	P9903763	LOWER HOUSING
764	P9903764	PHLP HD SCR M5-.8 X 6
765	P9903765	COVER PLATE
766	P9903766	RETAINING RING 6MM
767	P9903767	BRAKE OPERATING FINGER
768	P9903768	SHAFT
769	P9903769	HANDLE KNOB
770	P9903770	HANDLE
771	P9903771	PIN
772	P9903772	SET SCREW M5-.8 X 6
773	P9903773	SHAFT
775	P9903775	BRACKET
777	P9903777	SET SCREW M6-1 X 10
778	P9903778	CAP SCREW M6-1 X 20
780	P9903780	PHLP HD SCR M5-.8 X 12
783	P9903783	REGULATING RING
785	P9903785	MOTOR SPLINE SLEEVE
786	P9903786	KEY 6 X 6 X 70
793	P9903793	SPLINE SLEEVE



Model G9903 Lower Drive System Breakdown



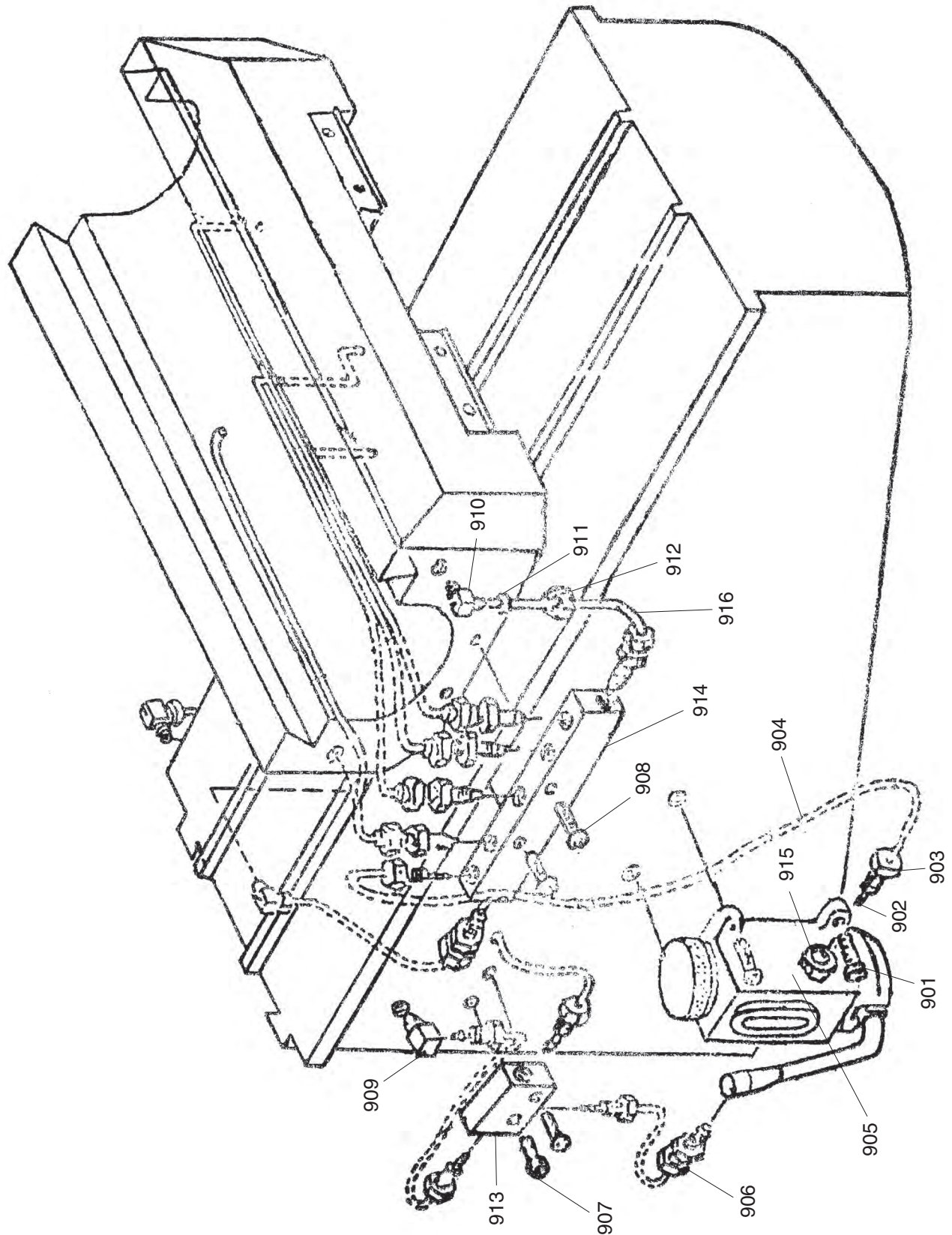
Model G9903 Lower Drive System Parts List

REF	PART #	DESCRIPTION
708	P9903708	MOTOR 2HP, 220V,3-PH
708-2	P9903708-2	MOTOR WIRING JUNCTION BOX
708-3	P9903708-3	MOTOR FAN COVER
708-4	P9903708-4	MOTOR FAN
710	P9903710	UPPER HOUSING
754	P9903754	LOWER COVER
763	P9903763	LOWER HOUSING
801	P9903801	ACORN NUT M8-1.25
802	P9903802	DIAL
804	P9903804	SET SCREW M6-1 X 12
805	P9903805	HOUSING
806	P9903806	CHIP SHIELD
807	P9903807	PHLP HD SCR M4-.7 X 6
808	P9903808	BUSHING
809	P9903809	ROLL PIN 3 X 25
810	P9903810	SPEED CHANGER CHAIN 1/8" X 1/2"
816	P9903816	BUSHING
817	P9903817	HANDWHEEL
819	P9903819	HANDWHEEL HANDLE
820	P9903820	CAUTION PLATE
821	P9903821	SET SCREW M6-1 X 8
825	P9903825	CAP SCREW M6-1 X 35
828	P9903828	SOLID PIN 3 X 12
829	P9903829	SHAFT
830	P9903830	WORM GEAR
833	P9903833	BEVEL GEAR
834	P9903834	KEY 3 X 3 X 8
835	P9903835	SHAFT
836	P9903836	RIBBED TIMING BELT
837	P9903837	UPPER COUPLING SHAFT
839	P9903839	LOWER COUPLING SHAFT
840	P9903840	BULL GEAR
841	P9903841	BALL BEARING 6008ZZ
842	P9903842	INT RETAINING RING 68MM
843	P9903843	SPACER
846	P9903846	FLAT WASHER 10MM
847	P9903847	SPECIAL BOLT
848	P9903848	SPRING SHIM

REF	PART #	DESCRIPTION
849	P9903849	FLANGE
850	P9903850	SET SCREW M6-1 X 6
851	P9903851	GUIDE
852	P9903852	CAP SCREW M4-.7 X 8
853	P9903853	DRIP PIPE
854	P9903854	OIL CUP
854-1	P9903854-1	OIL PIPE ADAPTER
855	P9903855	SPRING
857	P9903857	GEAR SLEEVE
859	P9903859	GEAR SHAFT
860	P9903860	DETENT PLATE
861	P9903861	SPECIAL NUT M12-1.75
862	P9903862	FLAT WASHER 12MM
863	P9903863	THREADED STUD M12-1.75 X 80
864	P9903864	SET SCREW M6-1 X 12
865	P9903865	SET BLOCK
866	P9903866	SET PIN
867	P9903867	COMPRESSION SPRING
868	P9903868	CAP SCREW M5-.8 X 12
869	P9903869	HANDLE KNOB
870	P9903870	HANDLE SHAFT
871	P9903871	HANDLE HUB
872	P9903872	ROLL PIN 3 X 16
873	P9903873	ROLL PIN 3 X 16
874	P9903874	CAP SCREW M8-1.25 X 20
875	P9903875	CAP SCREW M5-.8 X 25
877	P9903877	KEY 6 X 6 X 20
878	P9903878	WOODRUFF KEY 5 X 16
879	P9903879	BALL BEARING
880	P9903880	PINION SHAFT
881	P9903881	KEY
883	P9903883	PINION GEAR
884	P9903884	BEARING CAP
885	P9903885	CAP SCREW M5-.8 X 16
886	P9903886	TIMING PULLEY
887	P9903887	HEX NUT M16-1.5
888	P9903888	FRONT COVER
889	P9903889	CAP SCREW M4-.7 X 20



One-Shot Oiler Breakdown



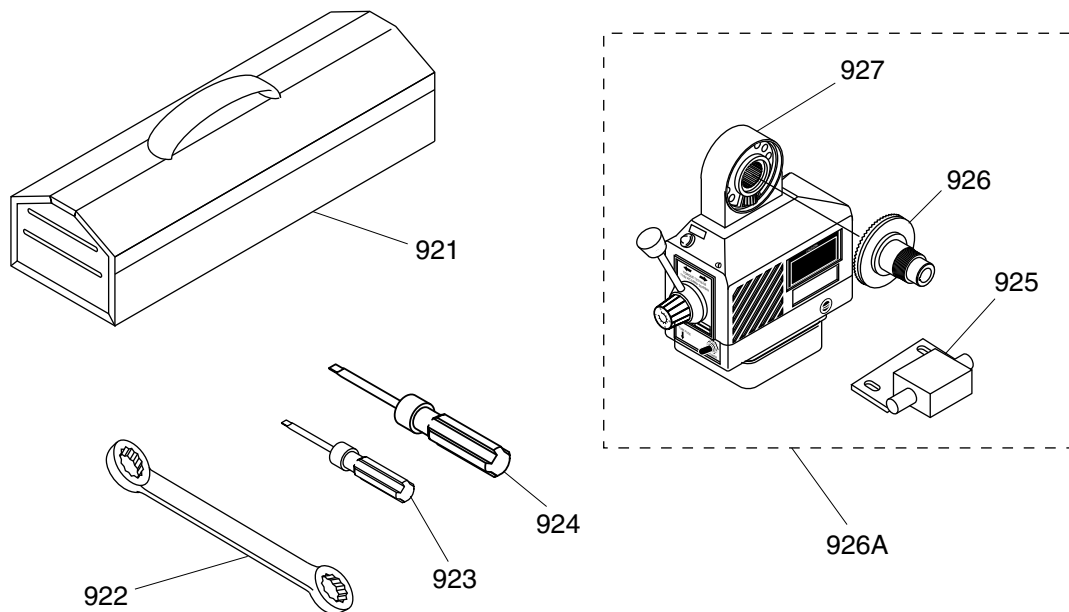
One-Shot Oiler Parts List

REF	PART #	DESCRIPTION
901	P9901901	CAP SCREW M6-1 X 20
902	P9901902	SLEEVE
903	P9901903	SPECIAL BOLT
904	P9901904	NYLON TUBING 4 X 3
905	P9901905	LUBRICATING PUMP
906	P9901906	ADAPTER
907	P9901907	CAP SCREW M5-.8 X 12
908	P9901908	CAP SCREW M5-.8 X 20

REF	PART #	DESCRIPTION
909	P9901909	ELBOW FITTING
910	P9901910	ELBOW FITTING
911	P9901911	SLEEVE
912	P9901912	SPECIAL NUT
913	P9901913	MULTI-WAY JUNCTION
914	P9901914	MULTI-WAY JUNCTION
915	P9901915	FITTING
916	P9901916	BRONZE TUBING 4 X 0.5



Accessories Breakdown & Parts List

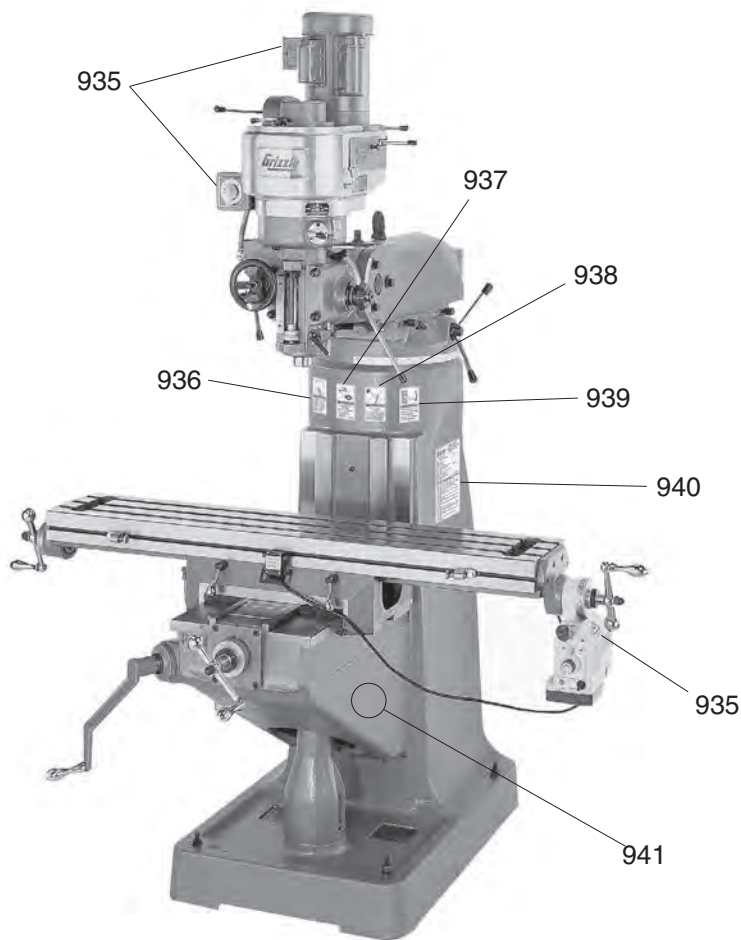


REF	PART #	DESCRIPTION
921	P9901921	TOOL BOX
922	P9901922	WRENCH 17/19MM
923	P9901923	STANDARD SCREWDRIVER 3/8"
924	P9901924	STANDARD SCREWDRIVER 1/4"

REF	PART #	DESCRIPTION
925	P9901925	POWER FEED LIMIT SWITCH
926A	P9901926A	POWER FEED ASSY W/DRIVE GEAR
926	P9901926	POWER FEED BRASS DRIVE GEAR
927	P9901927	POWER FEED UNIT



Label Placement



REF	PART #	DESCRIPTION
935	P9901935	ELECTRICITY LABEL
936	P9901936	READ MANUAL LABEL
937	P9901937	EYE/FACE INJURY HAZARD LABEL
938	P9901938	ENTANGLEMENT HAZARD LABEL
939	P9901939	DISCONNECT WARNING LABEL

REF	PART #	DESCRIPTION
940	P9901940	MACHINE ID LABEL (G9901)
940	P9902940	MACHINE ID LABEL (G9902)
940	P9903940	MACHINE ID LABEL (G9903)
941	P9901941	GRIZZLY GREEN TCH-UP PAINT

WARNING

Safety labels warn about machine hazards and ways to prevent injury. The owner of this machine **MUST** maintain the original location and readability of the labels on the machine. If any label is removed or becomes unreadable, **REPLACE** that label before using the machine again. Contact Grizzly at (800) 523-4777 or www.grizzly.com to order new labels.

