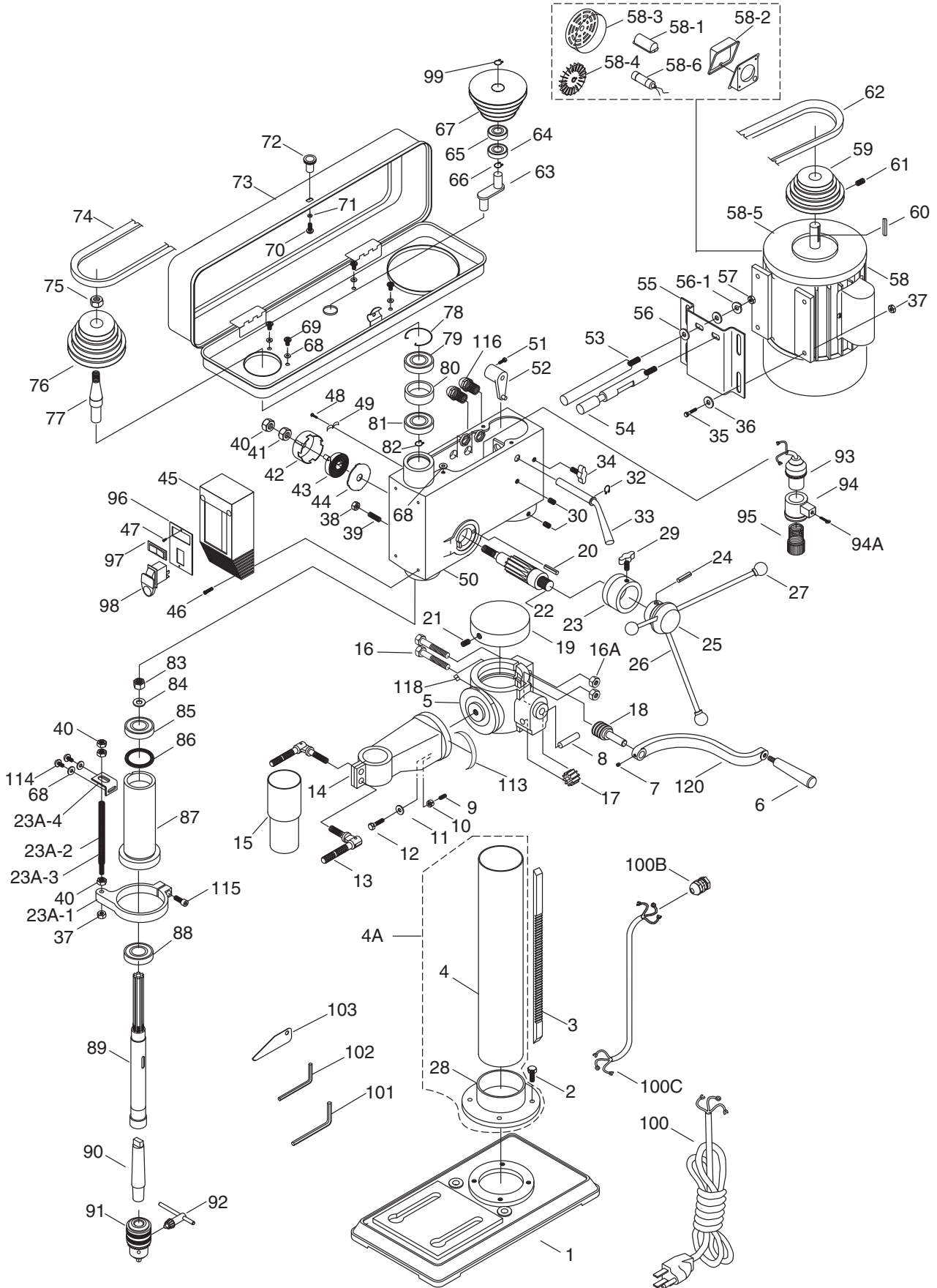


# Main



# Main Parts List

REF	PART #	DESCRIPTION
1	P9969001	BASE
2	P9969002	HEX BOLT M10-1.5 X 25
3	P9969003	RACK
4	P9969004A	COLUMN
4A	P9969004A	COLUMN ASSEMBLY
5	P9969005	GEARBOX BRACKET
6	P9969006	HANDLE
7	P9969007	SET SCREW M6-1 X 10
8	P9969008	SHAFT
9	P9969009	LOCKING PIN
10	P9969010	HEX NUT M6-1
11	P9969011	FLAT WASHER 24MM
12	P9969012	HEX BOLT M24-30 X 50
13	P9969013	LOCK HANDLE
14	P9969014	TABLE SUPPORT ASSEMBLY
15	P9969015	BRACKET COLUMN
16	P9969016	CLAMP BOLT M16-1.75 X 60
16A	P9969016A	HEX NUT M16-2
17	P9969017	PINION GEAR
18	P9969018	WORM GEAR
19	P9969019	COLUMN CAP
20	P9969020	ROLL PIN 6 X 20
21	P9969021	SET SCREW M6-1 X 10
22	P9969022	FEED SHAFT
23	P9969023	DEPTH RING
23A-1	P9969023A-1	DEPTH STOP BRACKET V1
23A-2	P9969023A-2	SCALE
23A-3	P9969023A-3	DEPTH STOP SCALE STUD
23A-4	P9969023A-4	DEPTH STOP BRACKET
24	P9969024	ROLL PIN 5 X 40
25	P9969025	PINION HUB
26	P9969026	DOWNFEED HANDLE
27	P9969027	DOWNFEED HANDLE KNOB
28	P9969028	COLUMN SHOULDER
29	P9969029	DEPTH RING KNOB M8-1.25 X 16
30	P9969030	SET SCREW M10-1.5 X 12
32	P9969032	EXT RETAINING RING 15MM
33	P9969033	TENSION LEVER
34	P9969034	BELT TENSION KNOB M8-1.25 X 16
35	P9969035	HEX BOLT M8-1.25 X 24
36	P9969036	FLAT WASHER 8MM
37	P9969037	HEX NUT M8-1.25
38	P9969038	HEX NUT M10-1.5
39	P9969039	BODY SET SCREW M10-1.5 X 25
40	P9969040	HEX NUT M12-1.75 THIN
41	P9969041	HEX NUT M12-1.75 THIN
42	P9969042	SPRING CAP
43	P9969043	FLAT COIL SPRING
44	P9969044	SPRING COVER
45	P9969045	SWITCH BOX
46	P9969046	PHLP HD SCR M5-.8 X 12
47	P9969047	TAP SCREW #6 X 1/2
48	P9969048	PHLP HD SCR M5-.8 X 10

REF	PART #	DESCRIPTION
49	P9969049	CORD CLAMP
50	P9969050	BODY
51	P9969051	HEX BOLT M8-1.25 X 16
52	P9969052	SHIFTER
53	P9969053	SLIDE BAR
54	P9969054	NOTCHED SLIDE BAR
55	P9969055	MOTOR BASE
56	P9969056	FLAT WASHER 12MM
56-1	P9969056-1	LOCK WASHER 12MM
57	P9969057	HEX NUT M12-1.75
58	P9969058	MOTOR 1HP 110V/220V 1PH
58-1	P9969058-1	CAPACITOR COVER
58-2	P9969058-2	CONNECTION BOX
58-3	P9969058-3	MOTOR COVER
58-4	P9969058-4	MOTOR FAN
58-5	P9969058-5	CAST IRON END BELL FOR MOTOR
58-6	P9969058-6	S CAPACITOR 200M 125V
59	P9969059	MOTOR PULLEY V2.02.99
60	P9969060	KEY 5 X 5 X 20
61	P9969061	SET SCREW M6-1 X 10
62	P9969062	V-BELT M27.5 3L275
63	P9969063	CENTER SHAFT
64	P9969064	BALL BEARING 6202ZZ
65	P9969065	BALL BEARING 6202ZZ
66	P9969066	EXT RETAINING RING 15MM
67	P9969067	CENTER PULLEY
68	P9969068	FLAT WASHER 6MM
69	P9969069	PHLP HD SCR M6-1 X 10
70	P9969070	PHLP HD SCR M5-.8 X 8
71	P9969071	FLAT WASHER 5MM
72	P9969072	KNOB M5-.8
73	P9969073	PULLEY COVER
74	P9969074	V-BELT M25 3L250
75	P9969075	PULLEY NUT
76	P9969076	SPINDLE PULLEY V2.02.99
77	P9969077	SPINDLE PULLEY SHAFT
78	P9969078	INT RETAINING RING 62MM
79	P9969079	BALL BEARING 6205ZZ
80	P9969080	SPACER
81	P9969081	BALL BEARING 6205ZZ
82	P9969082	INT RETAINING RING 62MM
83	P9969083	ROUND NUT M17 X 1
84	P9969084	THRUST WASHER 17.5MM
85	P9969085	BALL BEARING 6203ZZ
86	P9969086	RUBBER WASHER 62 X 50 X 2
87	P9969087	QUILL
88	P9969088	BALL BEARING 6205ZZ
89	P9969089	SPINDLE
90	P9969090	ARBOR MT#3-JT#3
91	P9969091	CHUCK 1-16MM JT3
92	P9969092	CHUCK KEY
93	P9969093	LIGHT SOCKET 110V

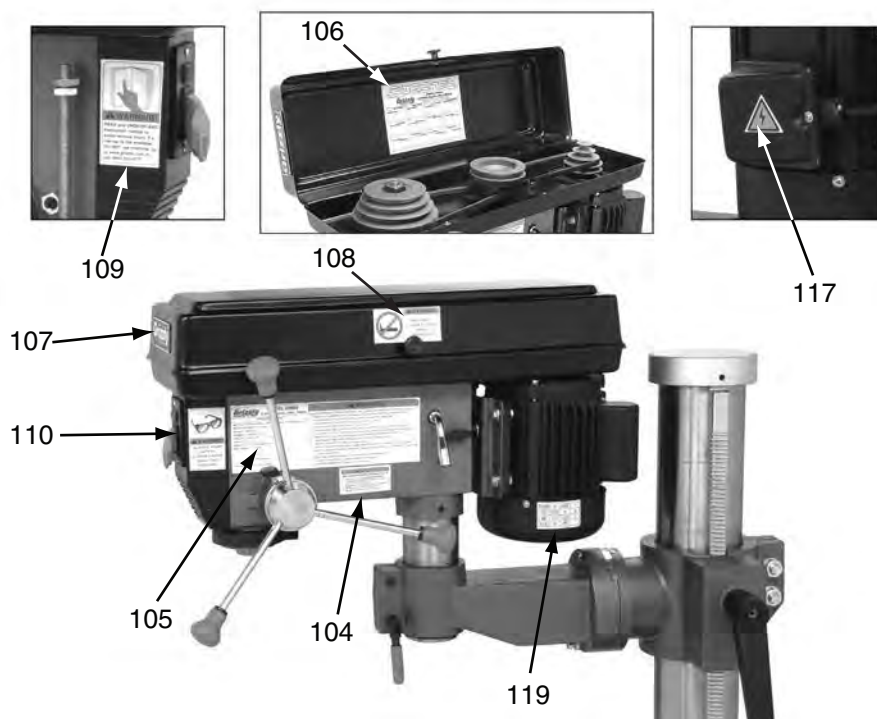


# Main Parts List Continued

REF	PART #	DESCRIPTION
94	P9969094	LIGHT BASE 110V
94A	P9969094A	PHLP HD SCR M5-.8 X 20
95	P9969095	LIGHT SCREW
96	P9969096	SWITCH PLATE
97	P9969097	LIGHT SWITCH
98	P9969098	SAFETY PADDLE SWITCH
99	P9969099	INT RETAINING RING 38MM
100	P9969100	POWER CORD
100B	P9969100B	STRAIN RELIEF
100C	P9969100C	MOTOR CORD

REF	PART #	DESCRIPTION
101	P9969101	HEX WRENCH 5MM
102	P9969102	HEX WRENCH 3MM
103	P9969103	DRIFT KEY
113	P9969113	ANGLE SCALE
114	P9969114	PHLP HD SCR M6-1 X 8
115	P9969115	CAP SCREW M8-1.25 X 20
116	P9969116	STRAIN RELIEF
118	P9969118	INDICATOR
120	P9969120	CRANK LEVER

## Labels



REF	PART #	DESCRIPTION
104	P9969104	LIGHT WARNING LABEL
105	P9969105	WARNING/ID LABEL
106	P9969106	SPEED CHART LABEL
107	P9969107	GRIZZLY BLACK/AL LABEL
108	P9969108	BELT COVER CLOSED LABEL

REF	PART #	DESCRIPTION
109	P9969109	READ MANUAL 2" X 3-5/16"
110	P9969110	SAFETY GLASSES 2" X 3-5/16"
117	P9969117	ELECTRICITY LABEL
119	P9969119	MOTOR LABEL

## WARNING

Safety labels warn about machine hazards and ways to prevent injury. The owner of this machine **MUST** maintain the original location and readability of the labels on the machine. If any label is removed or becomes unreadable, **REPLACE** that label before using the machine again. Contact Grizzly at (800) 523-4777 or [www.grizzly.com](http://www.grizzly.com) to order new labels.

