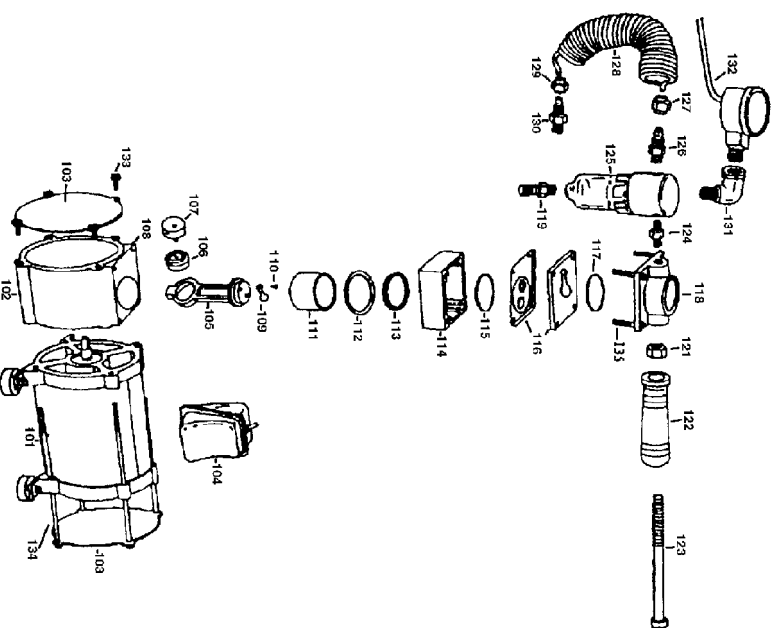


Model H3272 Mini Air Compressor



Ref#	Part#	Description
101	PH3272101	Motor
102	PH3272102	Front Case
103	PH3272103	Front Cover
104	PH3272104	Capacitor/On/Off Switch
105	PH3272105	Piston Rod
106	PH3272106	Ball Bearing
107	PH3272107	Crankshaft
108	PSB10M	Cap Screw M5-.8 x 15
109	PH3272109	Inlet & Exhaust Plate
110	PSB57M	Cap Screw M3-.5 X 6
111	PH3272111	Cylinder
112	PH3272112	Compression Ring
113	PH3272113	Collar
114	PH3272114	Cylinder Base
115	PH3272115	O-Ring
116	PH3272116	Valve Plate Set
117	PH3272117	O-Ring

Ref#	Part #	Description
118	PH3272118	Cylinder Head
119	PH3272119	Release Valve
121	PNO2M	Hex Nut M10-1.5.
122	PH3272122	Handle
123	PH3272123	Handle Screw
124	PH3272124	Connector
125	PH3272125	Water Filter
126	PH3272126	Connector
127	PH3272127	Air Hose Nut
128	PH3272128	Air Hose
129	PH3272129	Air Hose Nut
130	PH3272130	Connector 1/4 NPT
131	PH3272131	Elbow
132	PH3272132	Pressure Switch
133	PSO9M	Philp Hd Scr M5-.8 X 10
134	PS77M	Philp Hd Scr M5-.8 x 140
135	PS78M	Phil Hd Scr M4-.7 x 45

Introduction

This 1/2 HP Mini Air Compressor is ideal for most air brush sets. Portable design features automatic shut-off at 38 PSI, a moisture trap, an air brush holder and a coiled air hose. CFM at maximum PSI is 0.48 and the total weight is 7 lbs.

Safety

1. READ THIS ENTIRE MANUAL BEFORE OPERATING THE COMPRESSOR.
2. OPERATE THE COMPRESSOR IN A WELL VENTILATED AREA.
3. NEVER AIM THE AIR NOZZLE DIRECTLY AT YOURSELF OR OTHERS.
4. DO NOT USE THE COMPRESSOR FOR FILLING BREATHING OR DIVING APPARATUS.
5. ALWAYS WEAR SAFETY GLASSES WHEN OPERATING THIS MACHINE.
6. DO NOT USE A TOOL THAT REQUIRES MORE THAN THE COMPRESSORS CFM AND PSI RATING.

Operations

The Model H3272 Mini Air Compressor is wired for 110V, single-phase operation only.

To operate the mini air compressor:

1. Make sure the compressor is disconnected from the power source.
2. Connect your coiled air hose to the 1/4" NPT connector on the air filter. Note—*Use teflon tape on the threads of the fittings.*
3. Connect the air brush or other air tools to the compressor.
4. Plug the compressor in and press the switch to start it.
5. Disconnect the air tool and unplug the compressor when not in use.

Maintenance

Regular periodic maintenance on your air compressor will ensure its optimum performance. Make a habit of inspecting your compressor each time you use it. Check the following items:

- Clean off the cylinder head.
- Check for worn or damaged cords and plugs.
- Check for any other condition that could hamper the safe operation of this machine.
- Check for loose bolts or fittings.
- Check air lines and connectors to make sure they are in good condition.
- Drain the moisture trap periodically.

⚠ WARNING

Always wear safety glasses and use extreme caution when working around compressed air.

Set Up

The Model H3272 was shipped in a carefully packed box. Inspect the machine for damages due to shipping. If you have concerns please contact us. Contact information is on the back page.

Place the Model H3272 on a flat surface in a well ventilated, dry area where temperatures will not exceed 90°F.

The Model H3272 is an oilless compressor. **DO NOT ADD OIL.**

⚠️ WARNING

Always unplug compressor when performing maintenance or changing air tools.