



8" BUFFER

MODEL H4380

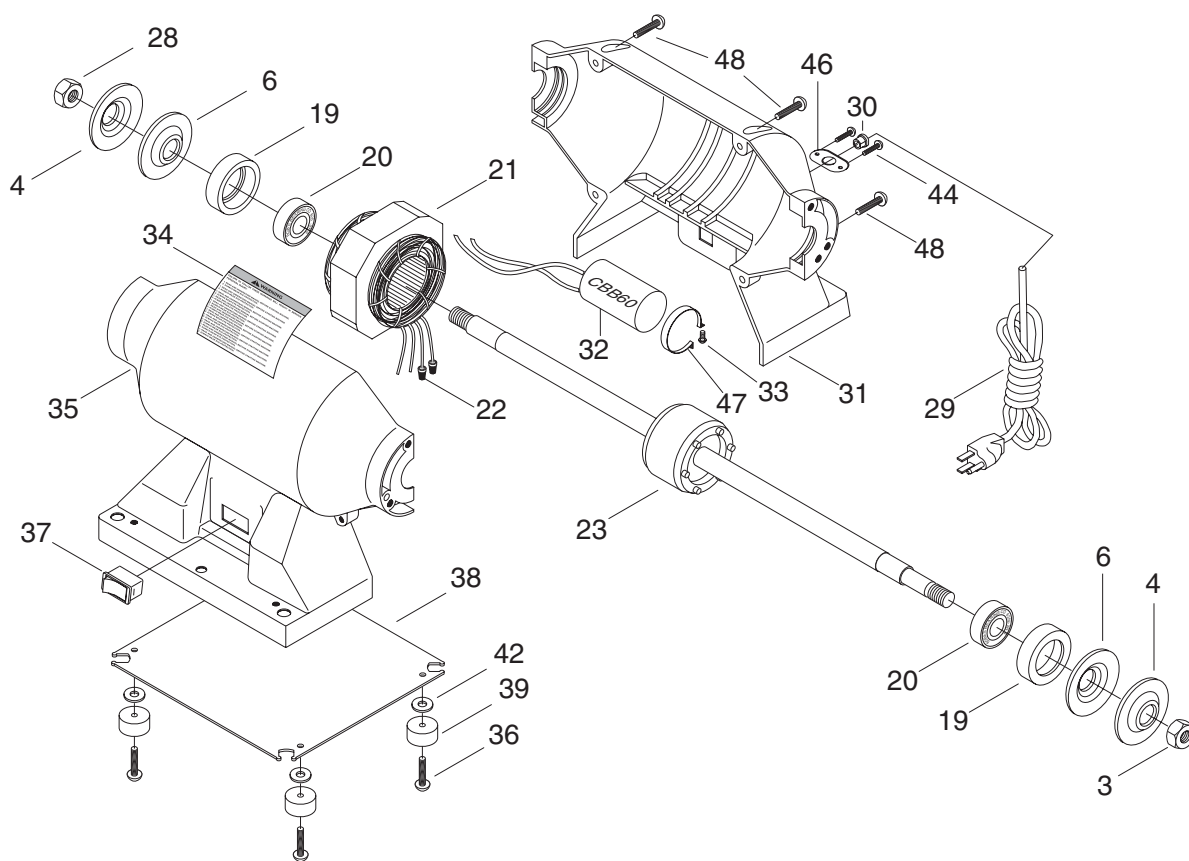
PARTS LIST



COPYRIGHT © APRIL, 2002 BY GRIZZLY INDUSTRIAL, INC.
**WARNING: NO PORTION OF THIS MANUAL MAY BE REPRODUCED IN ANY SHAPE
OR FORM WITHOUT THE WRITTEN APPROVAL OF GRIZZLY INDUSTRIAL, INC.**
PRINTED IN CHINA.

ONLINE PARTS LIST DISCLAIMER

THESE PARTS REPRESENT THE CONFIGURATION OF THE MACHINE AS IT IS CURRENTLY BEING SHIPPED. THE MACHINE CONFIGURATION CAN CHANGE AS PRODUCT IMPROVEMENTS ARE INCORPORATED. IF YOU OWN AN EARLIER VERSION OF THE MACHINE, THIS PARTS LIST MAY NOT EXACTLY DEPICT YOUR MACHINE. CONTACT CUSTOMER SERVICE IF YOU HAVE ANY QUESTIONS ABOUT PART DIFFERENCES. PREVIOUS PARTS LIST VERSIONS ARE NOT AVAILABLE ONLINE.



MODEL H4380 PARTS

Ref#	Part#	Description
3	PN04	HEX NUT $\frac{5}{8}$ "
4	PH4380004	OUTER FLANGE
6	PH4380005	INNER FLANGE
19	PH4379019	BUSHING
20	P6203	BALL BEARING 6203-2RS
21	PH4379021	MOTOR STATOR
22	PH4378022	WIRE NUT
23	PH4380023	MOTOR SHAFT
28	PN27	LEFT HAND HEX NUT $\frac{5}{8}$ "
29	PH4378029	WIRE
30	PH4378030	STRAIN RELIEF
31	PH4378031	BACK BODY
32	PH4378032	CAPACITOR CBB60

Ref#	Part#	Description
33	PS01	PHLP HD SCR 10-24 X $\frac{1}{2}$ "
34	PH4379034	MACHINE ID LABEL
35	PH4378035	FRONT BODY
36	PS22	PHLP HD SCR 10-24 X $\frac{5}{8}$ "
37	PH4378037	SWITCH
38	PH4378038	BASE PLATE
39	PH4378039	PAD
42	PW03	FLAT WASHER #10
44	PS06	PHLP HD SCR 10-24 X $\frac{3}{8}$ "
46	PH4378046	STRAIN RELIEF PLATE
47	PH4378047	CAPACITOR BRACKET
48	PS01	PHLP HD SCR 10-24 X 1"