



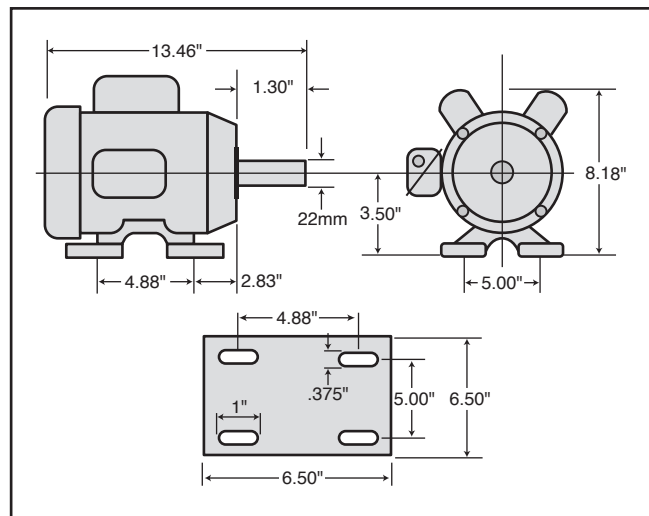
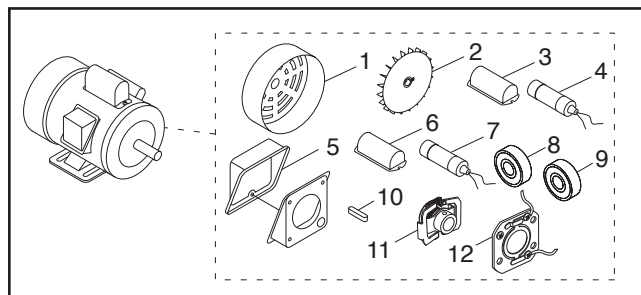
# MODEL H5385 2 HP ELECTRIC MOTOR INSTRUCTIONS

For questions or help with this product contact Tech Support at (570) 546-9663 or techsupport@grizzly.com

## Model H5385 Specifications

Power ..... 2 HP  
Cycle..... 60 Hz  
Voltage ..... 110V/220V  
Prewired Voltage ..... 110V  
Amps ..... 18.6A/9.3A  
Speed ..... 3450 RPM  
Phase ..... Single-Phase  
Class..... B

## Replaceable Parts

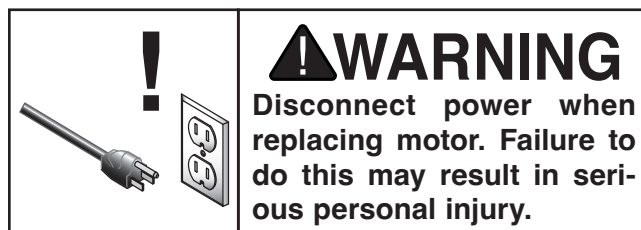
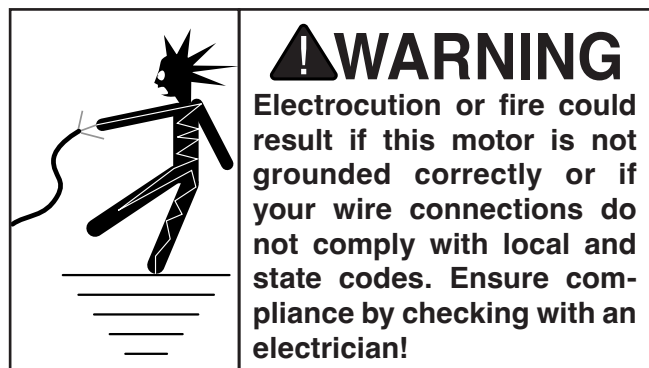


## REF PART # DESCRIPTION

1	PH5385001	MOTOR FAN COVER
2	PH5385002	MOTOR FAN
3	PH5385003	S CAPACITOR COVER
4	PH5385004	S CAPACITOR 400M 125V 1-3/4 X 3-3/8
5	PH5385005	JUNCTION BOX
6	PH5385006	RUN CAPACITOR COVER
7	PH5385007	R CAPACITOR 40M 250V 1-3/8 X 2-3/8
8	PH5385008	BALL BEARING 6205ZZ
9	PH5385009	BALL BEARING 6203ZZ
10	PH5385010	KEY 7 X 7 X 30
11	PH5385011	CENTRIFUGAL SWITCH 3450 RPM
12	PH5385012	CONTACT PLATE

## Making Wire Connections

If you are unsure how to attach wires to terminals, DO NOT continue. Contact an electrician for assistance. Connecting wires improperly may cause them to come loose or contact other wires, which can cause electrocution, fire, or a short.



COPYRIGHT © FEBRUARY, 2025 BY GRIZZLY INDUSTRIAL, INC.,  
NO PORTION OF THIS INSTRUCTION SHEET MAY BE REPRODUCED IN ANY SHAPE  
OR FORM WITHOUT THE WRITTEN APPROVAL OF GRIZZLY INDUSTRIAL, INC.  
(FOR MODELS MFD. SINCE 02/25) #LW23479 PRINTED IN TAIWAN

V1.02.25

\*\*\*Keep for Future Reference\*\*\*