



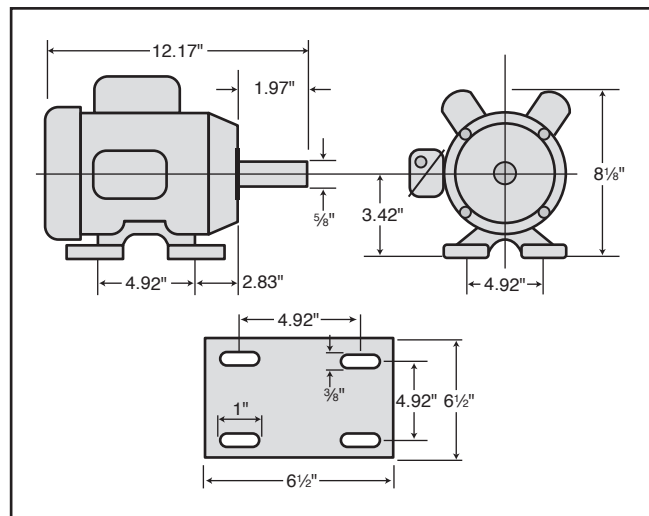
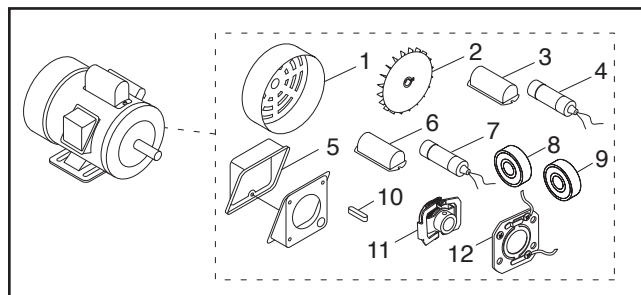
MODEL H5386 2 HP ELECTRIC MOTOR INSTRUCTIONS

For questions or help with this product contact Tech Support at (570) 546-9663 or techsupport@grizzly.com

Model H5386 Specifications

Power 2 HP
Cycle..... 60 Hz
Voltage 110V/220V
Prewired Voltage 110V
Amps 18.6A/9.3A
Speed 3450 RPM
Phase Single-Phase
Class..... B

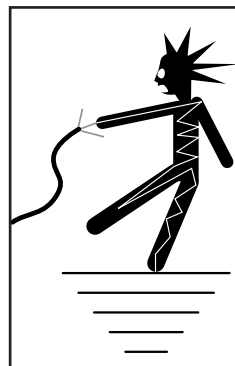
Replaceable Parts



REF	PART #	DESCRIPTION
1	PH5386001	MOTOR FAN COVER
2	PH5386002	MOTOR FAN
3	PH5386003	S CAPACITOR COVER
4	PH5386004	S CAPACITOR 400M 125V 1-3/4 X 3-3/8
5	PH5386005	JUNCTION BOX
6	PH5386006	RUN CAPACITOR COVER
7	PH5386007	R CAPACITOR 40M 250V 1-3/8 X 2-3/8
8	PH5386008	BALL BEARING 6202ZZ
9	PH5386009	BALL BEARING 6203ZZ
10	PH5386010	KEY 5 X 5 X 35
11	PH5386011	CENTRIFUGAL SWITCH 3450 RPM
12	PH5386012	CONTACT PLATE

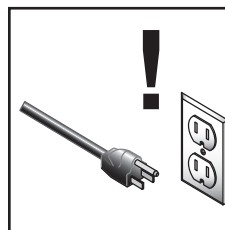
Making Wire Connections

If you are unsure how to attach wires to terminals, DO NOT continue. Contact an electrician for assistance. Connecting wires improperly may cause them to come loose or contact other wires, which can cause electrocution, fire, or a short.



! WARNING

Electrocution or fire could result if this motor is not grounded correctly or if your wire connections do not comply with local and state codes. Ensure compliance by checking with an electrician!



! WARNING

Disconnect power when replacing motor. Failure to do this may result in serious personal injury.

COPYRIGHT © NOVEMBER, 2013 BY GRIZZLY INDUSTRIAL, INC., REVISED SEPTEMBER, 2024 (LW)
NO PORTION OF THIS INSTRUCTION SHEET MAY BE REPRODUCED IN ANY SHAPE
OR FORM WITHOUT THE WRITTEN APPROVAL OF GRIZZLY INDUSTRIAL, INC.
(FOR MODELS MFD. SINCE 08/24) #DM16089 PRINTED IN TAIWAN

V2.09.24

Keep for Future Reference