



## MODEL H5390 5 HP ELECTRIC MOTOR INSTRUCTIONS

For questions or help with this product contact Tech Support at (570) 546-9663 or techsupport@grizzly.com

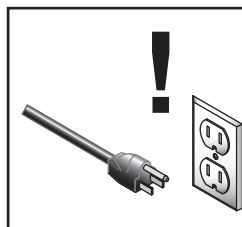
### Model H5390 Specifications

Power ..... 5 HP  
Cycle.....60Hz  
Voltage.....220V  
Amps .....25A  
RPM.....3450  
Phase ..... Single  
Class..... B



### ! WARNING

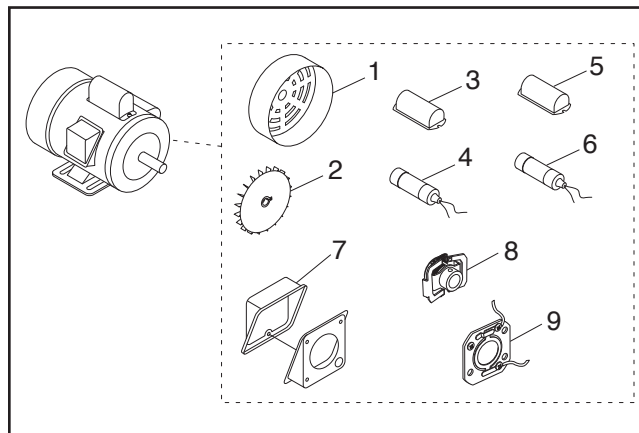
Electrocution or fire could result if this motor is not grounded correctly or if your wire connections do not comply with local and state codes. Ensure compliance by checking with a qualified electrician!



### ! WARNING

Disconnect power when replacing motor. Failure to do this may result in serious personal injury.

### Replaceable Parts



#### REF PART # DESCRIPTION

1	PH5390001	MOTOR FAN COVER
2	PH5390002	MOTOR FAN
3	PH5390003	S CAPACITOR COVER
4	PH5390004	S CAPACITOR 400M 125V 1-7/8 X 3-3/8
5	PH5390005	R CAPACITOR COVER
6	PH5390006	R CAPACITOR 50M 350V 1-7/8 X 3-3/8
7	PH5390007	JUNCTION BOX
8	PH5390008	CENTRIFUGAL SWITCH
9	PH5390009	CONTACT PLATE

### Making Wire Connections

If you are unsure how to attach wires to terminals, DO NOT continue. Contact an electrician for assistance. Connecting wires improperly may cause electrocution, fire, or a short.

COPYRIGHT © DECEMBER, 2007 BY GRIZZLY INDUSTRIAL, INC., REVISED JUNE, 2024 (LW)  
NO PORTION OF THIS INSTRUCTION SHEET MAY BE REPRODUCED IN ANY SHAPE  
OR FORM WITHOUT THE WRITTEN APPROVAL OF GRIZZLY INDUSTRIAL, INC.  
(FOR MODELS MFD. SINCE 08/24) #JB10237 PRINTED IN TAIWAN

V2.06.24

\*\*\*Keep for Future Reference\*\*\*