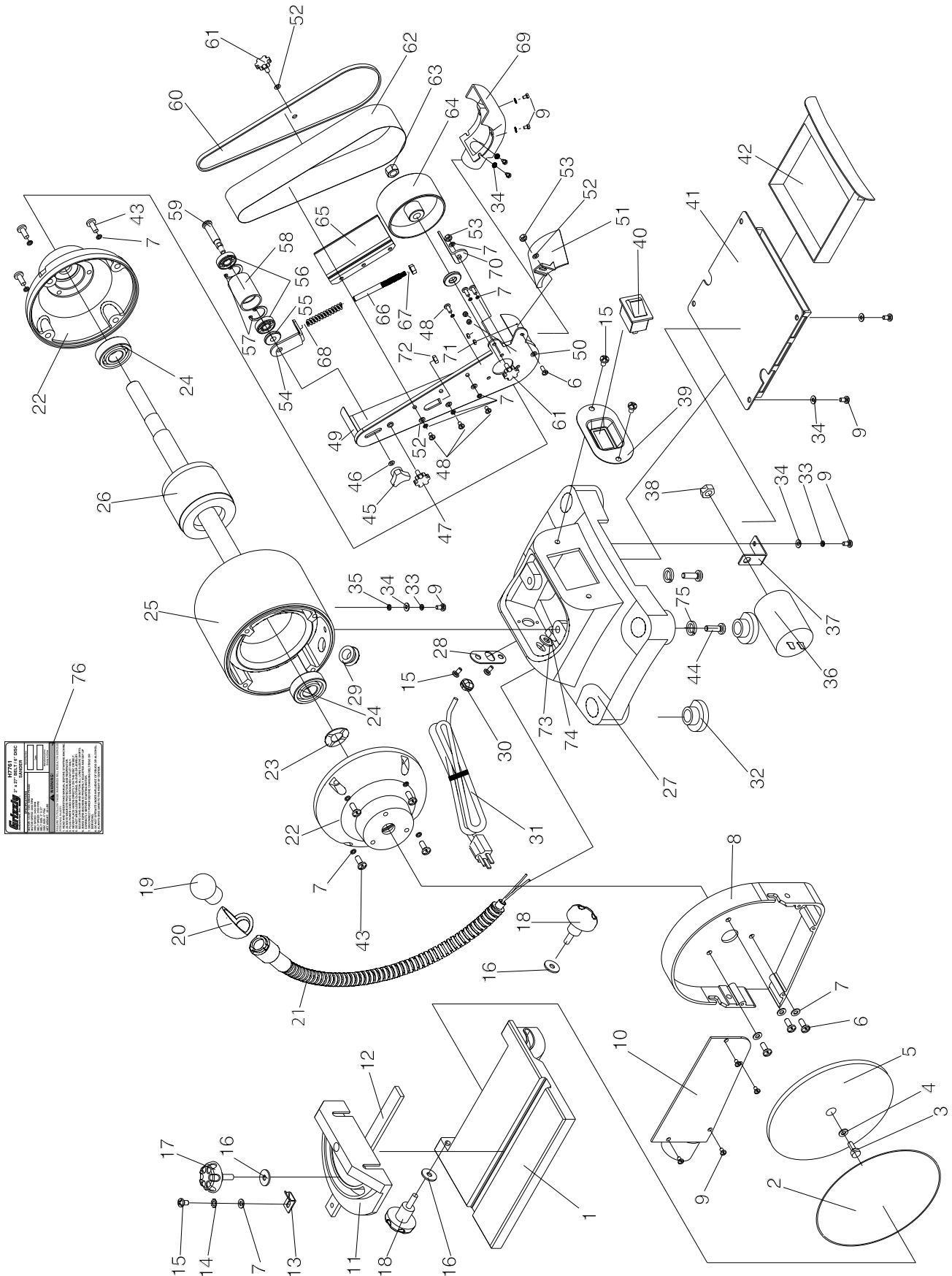


# Parts Breakdown



# Parts List

| REF | PART #    | DESCRIPTION                     |
|-----|-----------|---------------------------------|
| 1   | PH7761001 | WORK TABLE                      |
| 2   | PH7761002 | DISC PAPER 80 GRIT              |
| 3   | PSB01M    | CAP SCREW M6-1 X 16             |
| 4   | PTLW13M   | INTERNAL TOOTH WASHER 6MM       |
| 5   | PH7761005 | SANDING DISC                    |
| 6   | PS08M     | PHLP HD SCR M5-.8 X 12          |
| 7   | PLW01M    | LOCK WASHER 5MM                 |
| 8   | PH7761008 | DISC GUARD                      |
| 9   | PS79M     | PHLP HD SCR M4-.7 X 8           |
| 10  | PH7761010 | DISC COVER/DUST PORT            |
| 11  | PH7761011 | GAUGE BODY                      |
| 12  | PH7761012 | GAUGE SLIDE                     |
| 13  | PH7761013 | GAUGE INDICATOR                 |
| 14  | PTLW02M   | EXT TOOTH WASHER 5MM            |
| 15  | PS05M     | PHLP HD SCR M5-.8 X 8           |
| 16  | PW03M     | FLAT WASHER 6MM                 |
| 17  | PH7761017 | MITER GAUGE KNOB M6-1 X 22      |
| 18  | PH7761018 | LOCK KNOB M6-1 X 18             |
| 19  | PH7761019 | BULB 10W                        |
| 20  | PH7761020 | LAMP COVER                      |
| 21  | PH7761021 | LAMP ARM                        |
| 22  | PH7761022 | MOTOR END CAP                   |
| 23  | PH7761023 | SPECIAL WAVE WASHER 35MM        |
| 24  | P6202     | BEARING 6202                    |
| 25  | PH7761025 | STATOR                          |
| 26  | PH7761026 | ROTOR                           |
| 27  | PH7761027 | BASE                            |
| 28  | PH7761028 | CORD CLIP FIXED PLATE           |
| 29  | PH7761029 | CORD BUSHING                    |
| 30  | PH7761030 | CORD CLIP                       |
| 31  | PH7761031 | CORD                            |
| 32  | PH7761032 | RUBBER FOOT                     |
| 33  | PLW02M    | LOCK WASHER 4MM                 |
| 34  | PW05M     | FLAT WASHER 4MM                 |
| 35  | PTLW11M   | INT TOOTH WASHER 4MM            |
| 36  | PH7761036 | CAPACITOR 9M 300VAC 1.3" X 1.8" |
| 37  | PH7761037 | CAPACITOR BRACKET               |
| 38  | PN03M     | HEX NUT M8-1.25                 |

| REF | PART #    | DESCRIPTION               |
|-----|-----------|---------------------------|
| 39  | PH7761039 | SWITCH PLATE              |
| 40  | PH7761040 | SWITCH                    |
| 41  | PH7761041 | TOOL STORAGE BOTTOM COVER |
| 42  | PH7761042 | TOOL STORAGE              |
| 43  | PS06M     | PHLP HD SCR M5-.8 X 20    |
| 44  | PS26M     | PHLP HD SCR M6-1 X 20     |
| 45  | PH7761045 | TRACKING KNOB M8-1.25     |
| 46  | PW01M     | FLAT WASHER 8MM           |
| 47  | PH7761047 | TENSIONING KNOB M6-1 X 10 |
| 48  | PS09M     | PHLP HD SCR M5-.8 X 10    |
| 49  | PH7761049 | RIGHT SAFE GUARD          |
| 50  | PW02M     | FLAT WASHER 5MM           |
| 51  | PH7761051 | SAFE GUARD                |
| 52  | PW02M     | FLAT WASHER 5MM           |
| 53  | PN06M     | HEX NUT M5-.8             |
| 54  | PH7761054 | TENSION PLATE             |
| 55  | PH7761055 | IDLER SHAFT CUSHION       |
| 56  | P6201     | BALL BEARING 6201RS       |
| 57  | PR29M     | INT RETAINING RING 32MM   |
| 58  | PH7761058 | IDLER DRUM                |
| 59  | PH7761059 | IDLER SHAFT               |
| 60  | PH7761060 | RIGHT GUARD COVER         |
| 61  | PH7761061 | COVER KNOB M5-.8 X 10     |
| 62  | PH7761062 | SANDING BELT 80 GRIT      |
| 63  | PN09M     | HEX NUT M12-1.75          |
| 64  | PH7761064 | BELT DRIVE WHEEL          |
| 65  | PH7761065 | BELT SUPPORT              |
| 66  | PH7761066 | TENSIONING ROD            |
| 67  | PN03M     | HEX NUT M8-1.25           |
| 68  | PH7761068 | COMPRESSION SPRING        |
| 69  | PH7761069 | DUST PORT                 |
| 70  | PH7761070 | RIGHT TOOL REST           |
| 71  | PN04M     | HEX NUT M4-.7             |
| 72  | PN01M     | HEX NUT M6-1              |
| 73  | PH7761073 | LOCK WASHER 10MM          |
| 74  | PN14M     | HEX NUT M10-1             |
| 75  | PLW03M    | LOCK WASHER 6MM           |
| 76  | PH7761076 | MACHINE ID LABEL          |

## WARNING

Safety labels warn about machine hazards and ways to prevent injury. The owner of this machine **MUST** maintain the original location and readability of the labels on the machine. If any label is removed or becomes unreadable, **REPLACE** that label before using the machine again. Contact Grizzly at (800) 523-4777 or [www.grizzly.com](http://www.grizzly.com) to order new labels.

