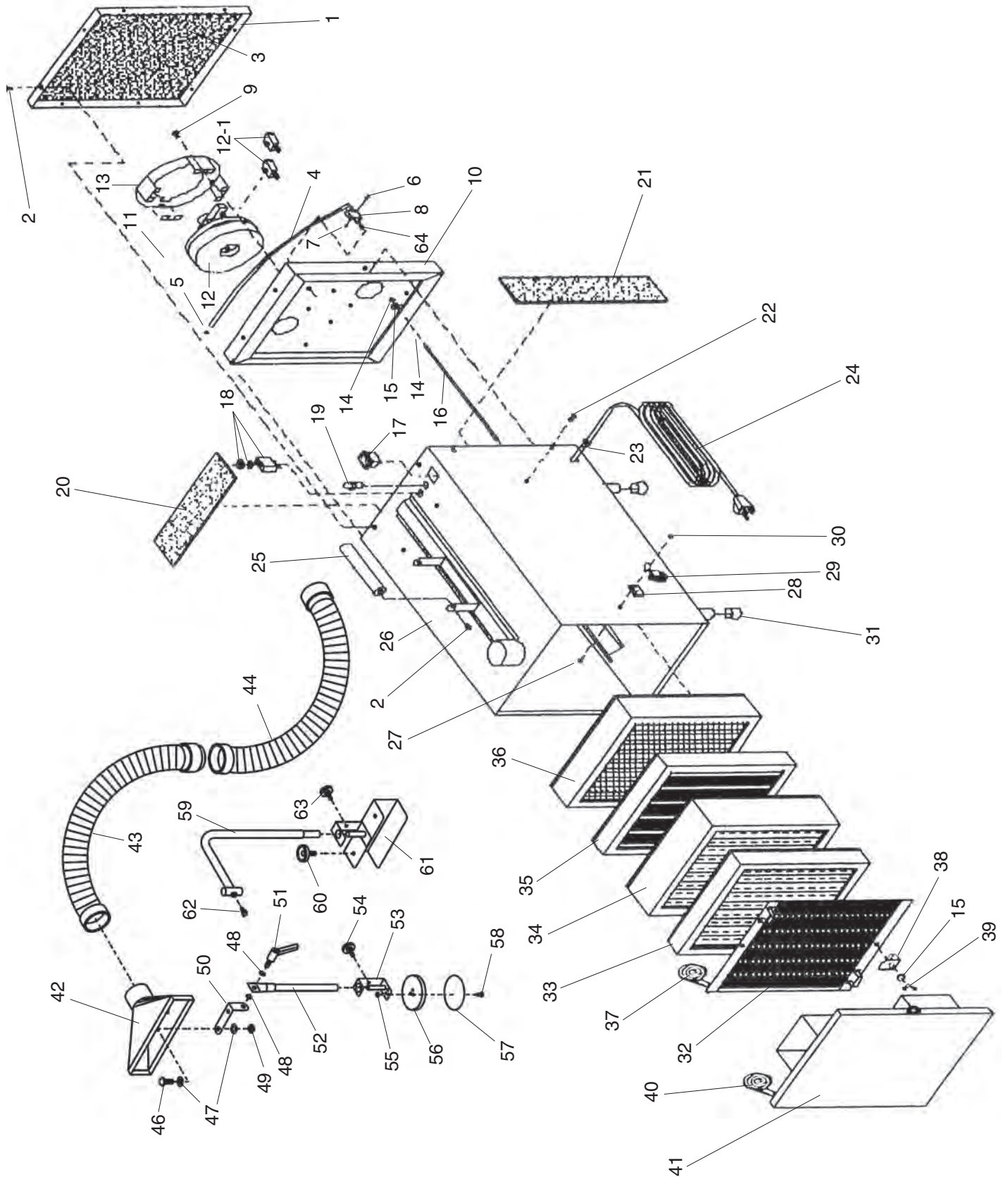


Parts Breakdown



Parts List

REF	PART #	DESCRIPTION
1	PH8375001	MOTOR COVER
2	PS02	PHLP HD SCR 1/4-20 X 3/4
3	PH8375003	FOAM (10 X 315 X 350MM)
4	PH8375004	PLASTIC TUBING (5 X 7 X 650MM)
5	PH8375005	BULKHEAD HOSE FITTING
6	PH8375006	CAP SCREW M2-.4 X 20
7	PH8375007	INSULATOR NUT M2-.7
8	PH8375008	PRESSURE SWITCH (0~2" H2O)
9	PS15	PHLP HD SCR 1/4-20 X 2
10	PH8375010	MOTOR/FAN MOUNT
11	PH8375011	FOAM TAPE (3 X 6 X 455MM)
12	PH8375012	110V MOTOR W/FAN
12-1	PH8375012-1	MOTOR BRUSH SET
13	PH8375013	MOTOR MOUNTING BASE
14	PN05	HEX NUT 1/4-20
15	PW06	FLAT WASHER 1/4
16	PH8375016	FILTER ANCHOR ROD
17	PH8375017	SEALED POWER SWITCH
18	PH8375018	15A CIRCUIT BREAKER ASSEMBLY
19	PH8375019	RED INDICATOR LAMP ASSEMBLY
20	PH8375020	FOAM (10 X 120 X 305MM)
21	PH8375021	FOAM (10 X 120 X 340MM)
22	PS22	PHLP HD SCR 10-24 X 5/8
23	PH8375023	STRAIN RELIEF
24	PH8375024	110V POWER CORD 9'
25	PH8375025	HANDLE
26	PH8375026	CABINET
27	PFH51M	FLAT HD SCR M3-.5 X 10
28	PH8375028	SPACER
29	PH8375029	LATCH ASSEMBLY
30	PN07M	HEX NUT M3-.5
31	PH8375031	RUBBER FOOT

REF	PART #	DESCRIPTION
32	T20635	STAINLESS SCREEN (1-2MM)
33	T20636	PLEATED FILTER (2-10 MICRON)
34	T20637	PLEATED FILTER (1-2 MICRON)
35	T20638	PLEATED FILTER (1 MICRON)
36	T20639	HEPA FILTER (0.3 MICRON)
37	PH8375037	FOAM TAPE (3 X 6 X 1300MM)
38	PH8375038	L-BRACKET
39	PWN02	WING NUT 1/4-20
40	PH8375040	FOAM TAPE (3 X 6 X 1360MM)
41	PH8375041	FRONT COVER
42	PH8375042	SUCTION HOOD
43	PH8375043	2" DIA. FIREPROOF HOSE
44	PH8375044	2.5" DIA. PVC HOSE
46	PB07	HEX BOLT 5/16-18 X 3/4
47	PW07	FLAT WASHER 5/16
48	PLW01	LOCK WASHER 5/16
49	PN02	HEX NUT 5/16-18
50	PH8375050	L-BRACKET
51	PH8375051	LEVER
52	PH8375052	ROD
53	PH8375053	BASE BRACKET
54	PH8375054	LOCK KNOB
55	PN07	HEX NUT 10-24
56	PH8375056	MAGNETIC BASE
57	PH8375057	ANTI-SCUFF DISK
58	PS06	PHLP HD SCR 10-24 x 3/8
59	PH8375059	EXTENSION ARM
60	PH8375060	HAND KNOB
61	PH8375061	CLAMP BODY
62	PH8375062	LARGE THUMB SCREW KNOB
63	PH8375063	SMALL THUMB SCREW KNOB
64	PH8375064	PRESSURE SWITCH SUPPORT RING



Label Placement



REF	PART #	DESCRIPTION
100	PLABEL-12A	READ MANUAL LABEL
101	PLABEL-14	ELECTRICITY LABEL
102	PH8375102	POISON HAZARD LABEL
103	PH8375103	GENERAL FUMES LABEL

REF	PART #	DESCRIPTION
104	PH8375104	WELDING RESPIRATOR LABEL
105	PLABEL-26	UNPLUG 110V 2" X 3 5/16"
106	PH8375106	DATA LABEL

WARNING

Safety labels warn about machine hazards and ways to prevent injury. The owner of this machine **MUST** maintain the original location and readability of the labels on the machine. If any label is removed or becomes unreadable, **REPLACE** that label before using the machine again. Contact Grizzly at (800) 523-4777 or www.grizzly.com to order new labels.

