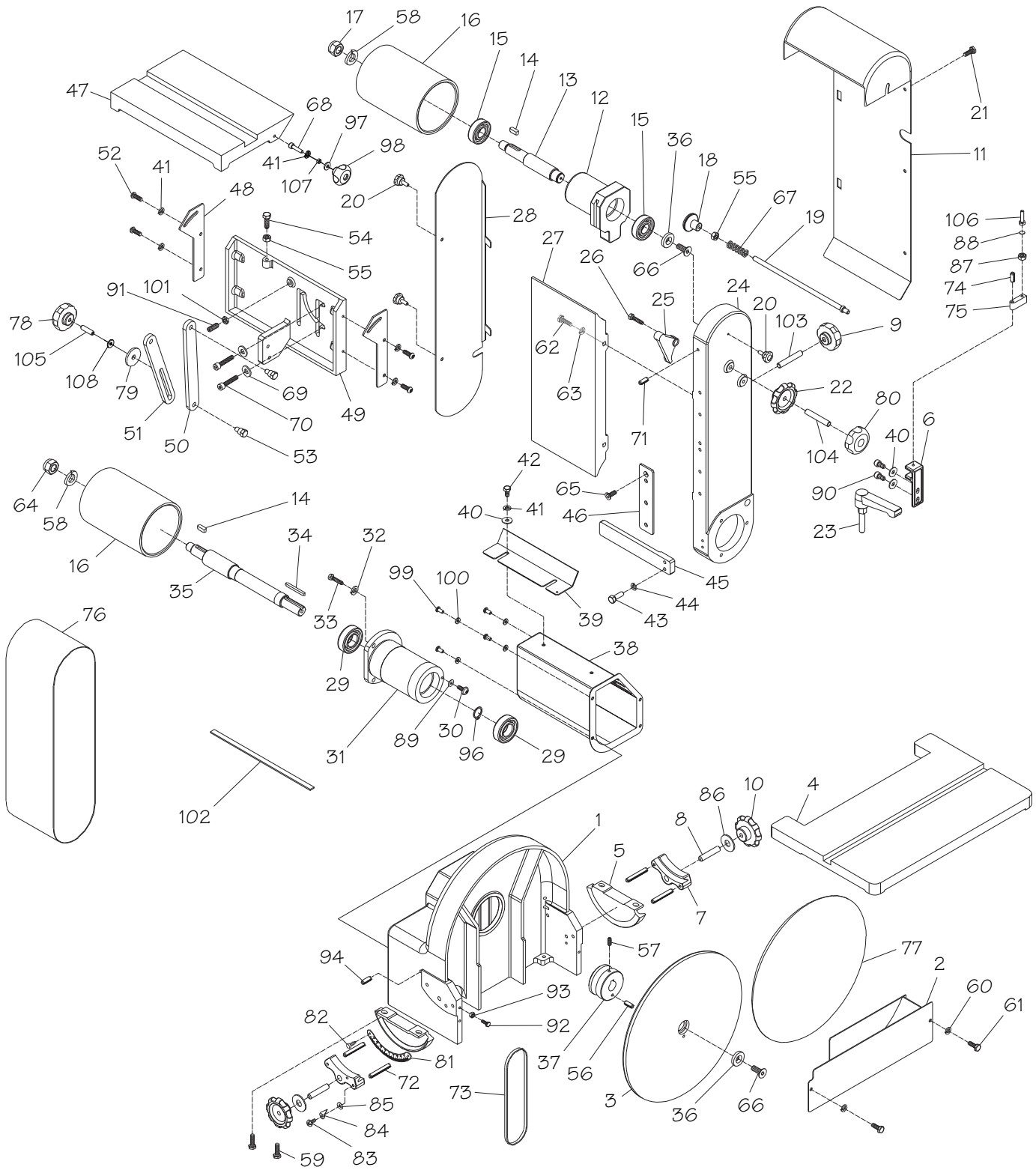


Machine Body



REF PART #	DESCRIPTION
1	PSB1093001 DISC HOUSING
2	PSB1093002 DISC DUST CHUTE

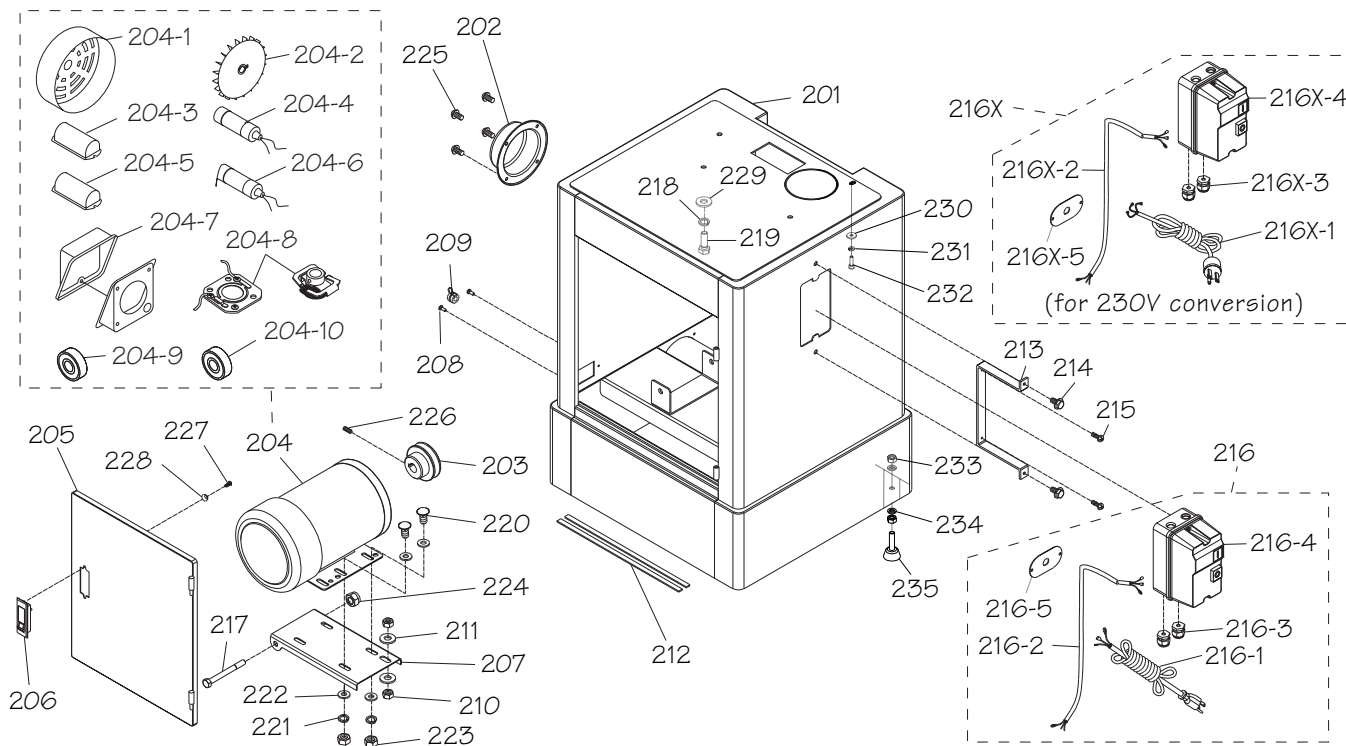
REF PART #	DESCRIPTION
3	PSB1093003 SANDING DISC PLATEN 12"
4	PSB1093004 DISC TABLE

Machine Body Parts List (Cont.)

REF PART #	DESCRIPTION
5	PSB1093005 TRUNNION
6	PSB1093006 TABLE BRACKET
7	PSB1093007 TRUNNION BRACKET
8	PSB1093008 SET SCREW M10-1.5 X 55
9	PSB1093009 KNOB M10-1.5, 6-LOBE, D52
10	PSB1093010 KNOB M10-1.5, 8-LOBE, D64
11	PSB1093011 SANDING BELT GUARD
12	PSB1093012 IDLER BEARING HOUSING
13	PSB1093013 IDLER SHAFT
14	PSB1093014 KEY 6 X 6 X 25 RE
15	PSB1093015 BALL BEARING 6204ZZ
16	PSB1093016 BELT ROLLER
17	PSB1093017 HEX NUT M16-2 LH
18	PSB1093018 KNOB M8-1.25, D25, ROUND
19	PSB1093019 BELT INDEX SHAFT
20	PSB1093020 KNOB BOLT M6-1 X 12, 6-LOBE, D21
21	PSB1093021 FLANGE SCREW M6-1 X 12
22	PSB1093022 KNOB M10-1.25, 8-LOBE, D63
23	PSB1093023 ADJUSTABLE HANDLE M10-1.5 X 45, 70L
24	PSB1093024 BELT FRAME
25	PSB1093025 PIVOT BLOCK
26	PSB1093026 HEX BOLT M8-1.25 X 25
27	PSB1093027 SANDING BELT PLATEN
28	PSB1093028 BELT ACCESS DOOR
29	PSB1093029 BALL BEARING 6205ZZ
30	PSB1093030 FLANGE SCREW M5-.8 X 8
31	PSB1093031 DRIVE BEARING HOUSING
32	PSB1093032 LOCK WASHER 8MM
33	PSB1093033 HEX BOLT M8-1.25 X 25
34	PSB1093034 KEY 6 X 6 X 40 RE
35	PSB1093035 DRIVE SHAFT
36	PSB1093036 FLAT WASHER 8 X 29 X 4.5MM
37	PSB1093037 DISC PULLEY
38	PSB1093038 BELT DUST CHUTE
39	PSB1093039 PINCH SHIELD
40	PSB1093040 FLAT WASHER 6MM
41	PSB1093041 LOCK WASHER 6MM
42	PSB1093042 HEX BOLT M6-1 X 12
43	PSB1093043 HEX BOLT M6-1 X 20
44	PSB1093044 LOCK WASHER 6MM
45	PSB1093045 BACK STOP
46	PSB1093046 PIVOT PLATE
47	PSB1093047 BELT TABLE
48	PSB1093048 TABLE BRACKET
49	PSB1093049 TABLE BASE
50	PSB1093050 TABLE ANGLE ADJUST BRACKET
51	PSB1093051 TABLE ANGLE BRACKET
52	PSB1093052 BUTTON HD CAP SCR M6-1 X 12
53	PSB1093053 SHOULDER BOLT M8-1.25 X 14, 9 X 18
54	PSB1093054 HEX BOLT M8-1.25 X 25
55	PSB1093055 HEX NUT M8-1.25
56	PSB1093056 ROLL PIN 6 X 20

REF PART #	DESCRIPTION
57	PSB1093057 SET SCREW M6-1 X 8
58	PSB1093058 LOCK WASHER 16MM
59	PSB1093059 FLANGE BOLT M6-1 X 12
60	PSB1093060 LOCK WASHER 6MM
61	PSB1093061 HEX BOLT M6-1 X 8
62	PSB1093062 HEX BOLT M8-1.25 X 20
63	PSB1093063 LOCK WASHER 8MM
64	PSB1093064 HEX NUT M16-2 LH
65	PSB1093065 FLAT HD CAP SCR M6-1 X 12
66	PSB1093066 FLAT HD CAP SCR M8-1.25 X 20
67	PSB1093067 COMPRESSION SPRING 1 X 9 X 26
68	PSB1093068 CAP SCREW M6-1 X 30
69	PSB1093069 FENDER WASHER 10MM
70	PSB1093070 CAP SCREW M10-1.5 X 30
71	PSB1093071 ROLL PIN 6 X 24
72	PSB1093072 ROLL PIN 6 X 45
73	PSB1093073 V-BELT A49
74	PSB1093074 ROLL PIN 5 X 30
75	PSB1093075 STOP BLOCK
76	PSB1093076 SANDING BELT 6" X 48" 60-GRIT
77	PSB1093077 SANDING DISC 12" 60-GRIT PSA
78	PSB1093078 KNOB M8-1.25, 6-LOBE, D21
79	PSB1093079 FENDER WASHER 8 X 30 X 3MM
80	PSB1093080 KNOB M10-1.25, 6-LOBE, D52
81	PSB1093081 TABLE TILT SCALE
82	PSB1093082 RIVET 2 X 5MM NAMEPLATE
83	PSB1093083 PHLP HD SCR M6-1 X 8
84	PSB1093084 POINTER
85	PSB1093085 FLAT WASHER 6MM
86	PSB1093086 FLAT WASHER 10MM
87	PSB1093087 HEX NUT M6-1
88	PSB1093088 GASKET 1 X 10MM
89	PSB1093089 FENDER WASHER 5 X 19 X 1.5
90	PSB1093090 CAP SCREW M6-1 X 20
91	PSB1093091 SET SCREW M8-1.25 X 20
92	PSB1093092 HEX BOLT M6-1 X 25
93	PSB1093093 HEX NUT M6-1
94	PSB1093094 DOWEL PIN 6 X 20
96	PSB1093096 EXT RETAINING RING 25MM
97	PSB1093097 FENDER WASHER 6MM
98	PSB1093098 KNOB M6-1, 4-LOBE, D40
99	PSB1093099 BUTTON HD CAP SCR M6-1 X 12
100	PSB1093100 LOCK WASHER 6MM
101	PSB1093101 HEX NUT M8-1.25 THIN
102	PSB1093102 FOAM SEAL 2 X 7 X 10MM
103	PSB1093103 SET SCREW M10-1.5 X 60
104	PSB1093104 SET SCREW M10-1.25 X 60
105	PSB1093105 SET SCREW M8-1.25 X 35
106	PSB1093106 HEX BOLT M6-1 X 25
107	PSB1093107 BUSHING
108	PSB1093108 FLAT WASHER 8MM THIN

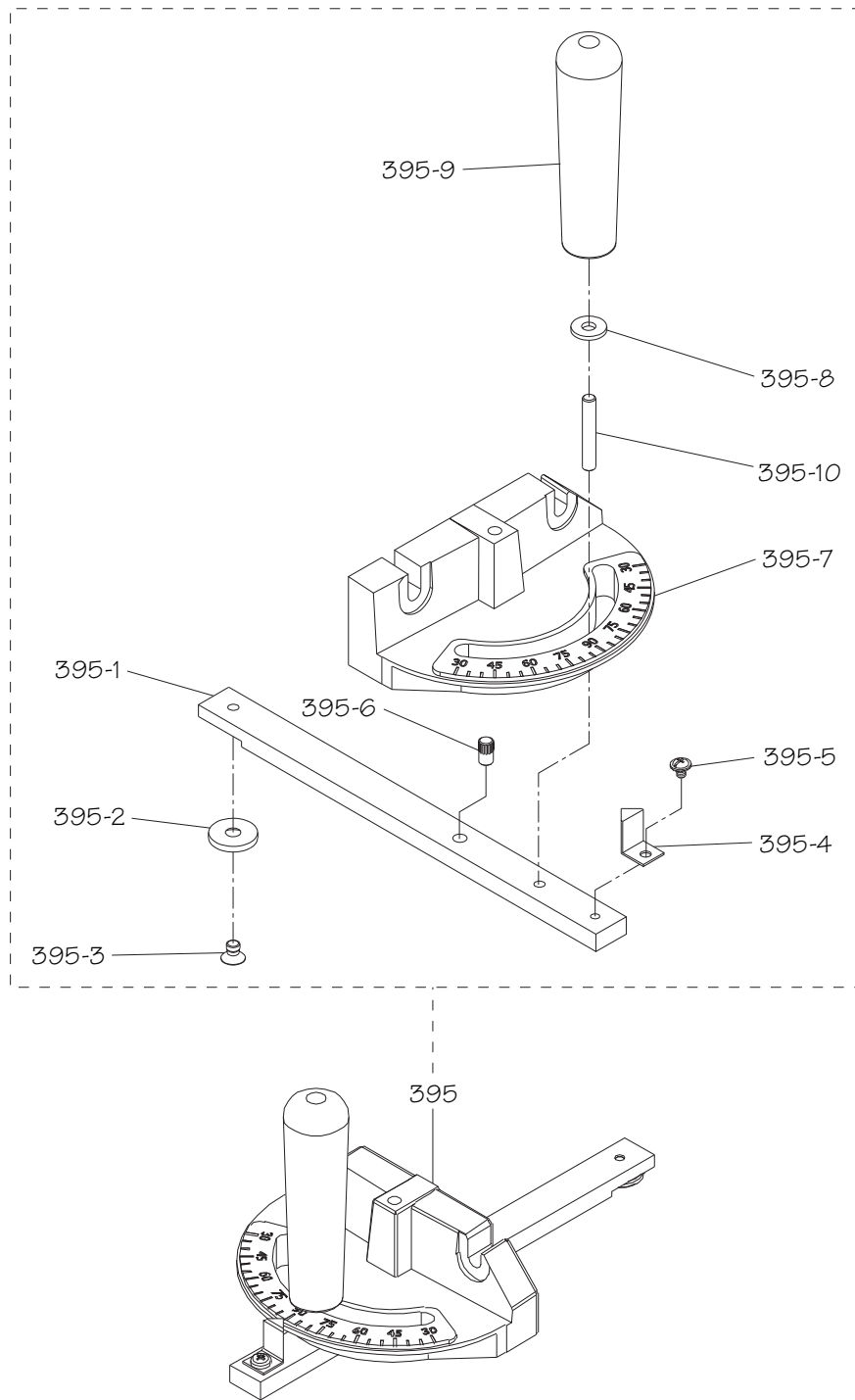
Stand



REF	PART #	DESCRIPTION
201	PSB1093201	STAND
202	PSB1093202	DUST PORT 4"
203	PSB1093203	MOTOR PULLEY
204	PSB1093204	MOTOR 1.5HP 115V/230V 1-PH
204-1	PSB1093204-1	MOTOR FAN COVER
204-2	PSB1093204-2	MOTOR FAN
204-3	PSB1093204-3	S CAPACITOR COVER
204-4	PSB1093204-4	S CAPACITOR 200M 125V1-3/8 X 2-5/8
204-5	PSB1093204-5	R CAPACITOR COVER
204-6	PSB1093204-6	R CAPACITOR 40M 300V1-1/2 X 2-3/8
204-7	PSB1093204-7	MOTOR JUNCTION BOX
204-8	PSB1093204-8	CONTACT PLATE/CENTRIFUGAL SWITCH
204-9	PSB1093204-9	BALL BEARING 6203ZZ (FRONT)
204-10	PSB1093204-10	BALL BEARING 6202ZZ (REAR)
205	PSB1093205	DOOR
206	PSB1093206	DOOR LATCH ASSEMBLY
207	PSB1093207	MOTOR MOUNTING PLATE
208	PSB1093208	PHLP HD SCR M5-.8 X 12
209	PSB1093209	STRAIN RELIEF TYPE-1 5/16"
210	PSB1093210	HEX NUT M10-1.5
211	PSB1093211	FLAT WASHER 10MM
212	PSB1093212	FOAM SEAL 3 X 10 X 380MM
213	PSB1093213	SWITCH MOUNTING BRACKET
214	PSB1093214	FLANGE BOLT M8-1.25 X 20
215	PSB1093215	PHLP HD SCR M4-.7 X 10
216	PSB1093216	MAGNETIC SWITCH ASSEMBLY 115V
216-1	PSB1093216-1	POWER CORD 14G 3W 78" 5-15P
216-2	PSB1093216-2	MOTOR CORD 14G 3W 22"

REF	PART #	DESCRIPTION
216-3	PSB1093216-3	STRAIN RELIEF TYPE-3 PG13.5
216-4	PSB1093216-4	MAGNETIC SWITCH SDE MP-18
216-5	PSB1093216-5	CORD PLATE
216X	PSB1093216X	MAGNETIC SWITCH ASSEMBLY 230V
216X-1	PSB1093216X-1	POWER CORD 14G 3W 78" 6-15P
216X-2	PSB1093216X-2	MOTOR CORD 14G 3W 22"
216X-3	PSB1093216X-3	STRAIN RELIEF TYPE-3 PG13.5
216X-4	PSB1093216X-4	MAGNETIC SWITCH SDE MP-09
216X-5	PSB1093216X-5	CORD PLATE
217	PSB1093217	HEX BOLT M10-1.5 X 160
218	PSB1093218	LOCK WASHER 8MM
219	PSB1093219	HEX BOLT M8-1.25 X 20
220	PSB1093220	HEX BOLT M8-1.25 X 25
221	PSB1093221	LOCK WASHER 8MM
222	PSB1093222	FLAT WASHER 8MM
223	PSB1093223	HEX NUT M8-1.25
224	PSB1093224	LOCK NUT M10-1.5
225	PSB1093225	FLANGE SCREW M6-1 X 12
226	PSB1093226	SET SCREW M6-1 X 12
227	PSB1093227	PHLP HD SCREW M4-.7 X 4
228	PSB1093228	FLAT WASHER 4MM
229	PSB1093229	FENDER WASHER 8MM
230	PSB1093230	FLAT WASHER 6MM
231	PSB1093231	LOCK WASHER 6MM
232	PSB1093232	CAP SCREW M6-1 X 20
233	PSB1093233	HEX NUT M12-1.75
234	PSB1093234	FLAT WASHER 12 X 20MM
235	PSB1093235	RUBBER FOOT

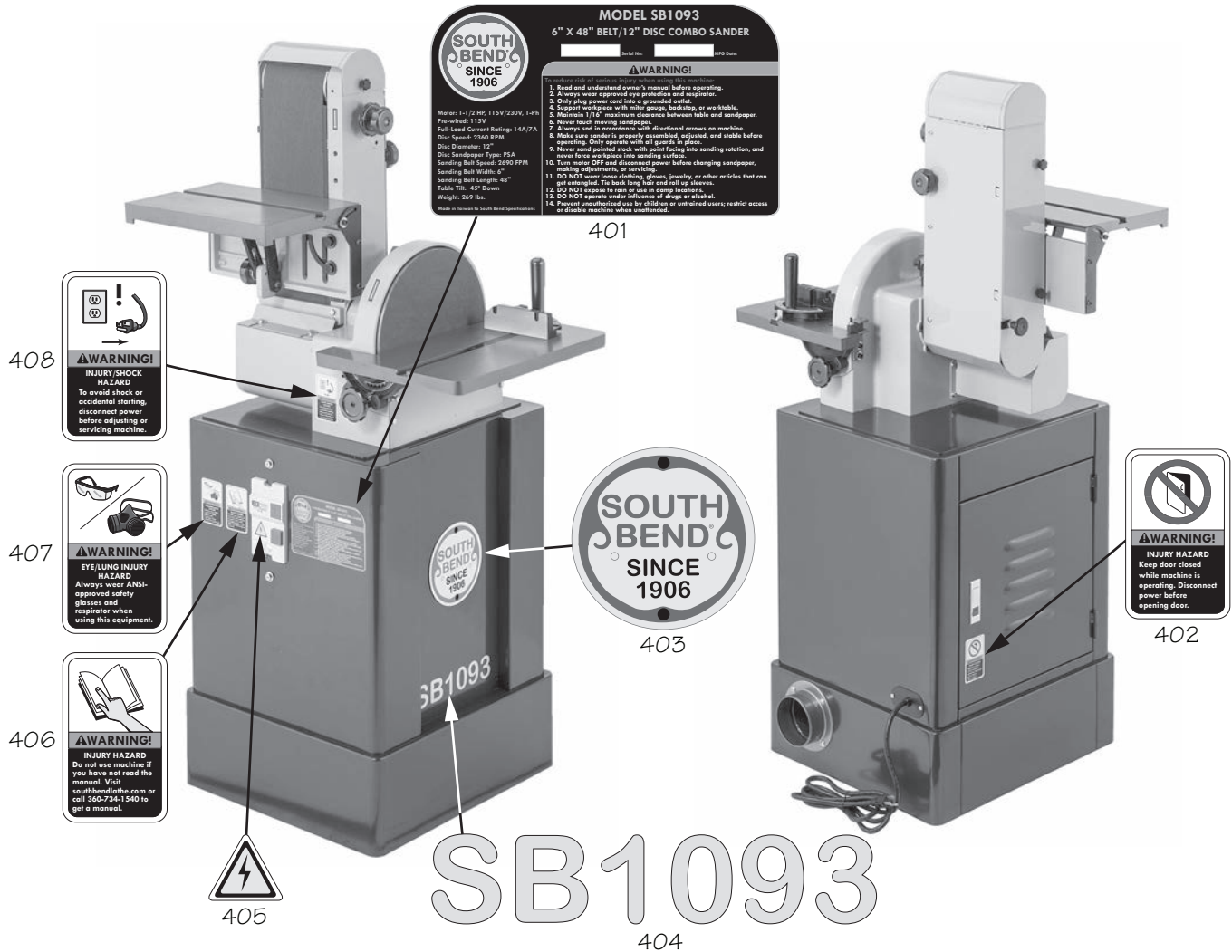
Miter Gauge



REF	PART #	DESCRIPTION
395	PSB1093395	MITER GAUGE ASSEMBLY
395-1	PSB1093395-1	GUIDE BAR
395-2	PSB1093395-2	GUIDE WASHER 6 X 22 X 2.5MM
395-3	PSB1093395-3	FLAT HD SCR M6-1 X 6
395-4	PSB1093395-4	MITER ANGLE POINTER
395-5	PSB1093395-5	FLANGE SCREW M5-.8 X 8

REF	PART #	DESCRIPTION
395-6	PSB1093395-6	DOWEL PIN 6.5 X 10
395-7	PSB1093395-7	MITER GAUGE BODY
395-8	PSB1093395-8	FLAT WASHER 1/4 NYLON
395-9	PSB1093395-9	HOLLOW HANDLE 1-1/8 X 4-5/16, 1/4-20
395-10	PSB1093395-10	SET SCREW 1/4-20 X 1-1/2

Labels & Cosmetics



REF	PART #	DESCRIPTION
401	PSB1093401	MACHINE ID LABEL
402	PSB1093402	DOOR CLOSED LABEL
403	PSB1093403	SOUTH BEND NAMEPLATE 152MM
404	PSB1093404	MODEL NUMBER LABEL

REF	PART #	DESCRIPTION
405	PSB1093405	ELECTRICITY LABEL
406	PSB1093406	READ MANUAL LABEL
407	PSB1093407	EYE/LUNG INJURY LABEL
408	PSB1093408	DISCONNECT POWER LABEL

⚠ WARNING

The safety labels provided with your machine are used to make the operator aware of the machine hazards and ways to prevent injury. The owner of this machine **MUST** maintain the original location and readability of these safety labels. If any label is removed or becomes unreadable, **REPLACE** that label before using the machine again. Contact South Bend Tools at (360) 734-1540 or www.southbendtools.com to order new labels.