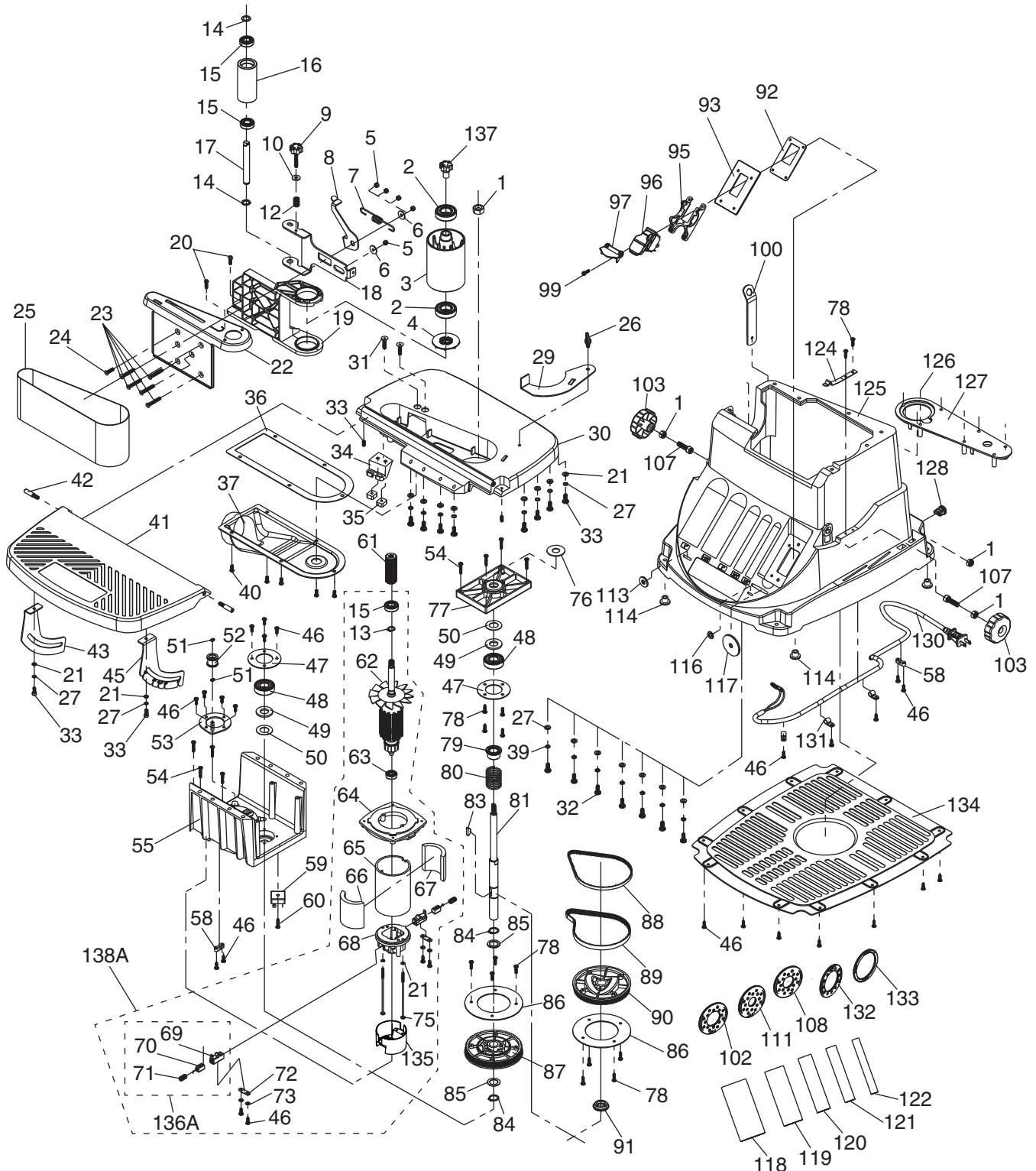


# SECTION 9: PARTS

We do our best to stock replacement parts when possible, but we cannot guarantee that all parts shown are available for purchase. Call (800) 523-4777 or visit [www.grizzly.com/parts](http://www.grizzly.com/parts) to check for availability.

## Main



# Main Parts List

REF	PART #	DESCRIPTION
1	PT27417001	HEX NUT M8-1.25
2	PT27417002	BALL BEARING 6004ZZ
3	PT27417003	DRUM WHEEL 3" X 4", ALUMINUM
4	PT27417004	SPINDLE WASHER 13MM
5	PT27417005	LOCK NUT M5-.8
6	PT27417006	FLAT WASHER 5MM
7	PT27417007	EXTENSION SPRING
8	PT27417008	BELT TENSION ARM
9	PT27417009	KNOB BOLT M5-.8 X 35
10	PT27417010	RUBBER WASHER 6MM
12	PT27417012	COMPRESSION SPRING 1 X 11 X 37
13	PT27417013	FLAT WASHER 14MM
14	PT27417014	EXT RETAINING RING 12MM
15	PT27417015	BALL BEARING 6001ZZ
16	PT27417016	DRUM WHEEL 1.5" X 3.375", ALUMINUM
17	PT27417017	DRUM AXLE 12 X 100MM
18	PT27417018	DRUM CARRIAGE
19	PT27417019	DRUM WHEEL HOUSING
20	PT27417020	PHLP HD SCR M4-.7 X 16
21	PT27417021	FLAT WASHER 5MM
22	PT27417022	BELT HOUSING COVER
23	PT27417023	FLAT HD SCR M5-.8 X 35
24	PT27417024	FLAT HD SCR M5-.8 X 20
25	PT27417025	SANDING BELT 4" X 24" 80-GRIT
26	PT27417026	WING BOLT M6-1 X 14
27	PT27417027	LOCK WASHER 5MM
29	PT27417029	BACKSTOP
30	PT27417030	FIXED TABLE
31	PT27417031	FLAT HD CAP SCR M6-1 X 25
32	PT27417032	PHLP HD SCR M6-1 X 16
33	PT27417033	PHLP HD SCR M5-.8 X 12
34	PT27417034	DRUM HOUSING SUPPORT
35	PT27417035	SQUARE NUT M6-1
36	PT27417036	DUST PORT GASKET
37	PT27417037	DUST PORT 1-1/2"
39	PT27417039	LOCK WASHER 6MM
40	PT27417040	PHLP HD SCR M5-.8 X 20
41	PT27417041	TILTING TABLE
42	PT27417042	TABLE TILT PIN M6-1 X 14, 8 X 25
43	PT27417043	TABLE TILT BRACKET (LEFT)
45	PT27417045	TABLE TILT STOP BRACKET (RIGHT)
46	PT27417046	TAP SCREW M4 X 14
47	PT27417047	UPPER BEARING SUPPORT
48	PT27417048	BALL BEARING 6203ZZ
49	PT27417049	FELT RING

REF	PART #	DESCRIPTION
50	PT27417050	RUBBER GASKET
51	PT27417051	SPINDLE WASHER
52	PT27417052	BEARING SLEEVE
53	PT27417053	LOWER BEARING SUPPORT
54	PT27417054	TAP SCREW M4 X 22
55	PT27417055	WHEEL SUPPORT
58	PT27417058	WIRE CLAMP
59	PT27417059	RECTIFIER KBPC1504
60	PT27417060	TAP SCREW M4 X 20
61	PT27417061	DRUM WHEEL
62	PT27417062	ROTOR
63	PT27417063	BALL BEARING 608ZZ
64	PT27417064	FAN SHROUD
65	PT27417065	FIELD ASSEMBLY
66	PT27417066	MAGNETIC SHOE (NORTH)
67	PT27417067	MAGNETIC SHOE (SOUTH)
68	PT27417068	ROTOR BASE
69	PT27417069	CARBON BRUSH HOLDER
70	PT27417070	CARBON BRUSH
71	PT27417071	CARBON BRUSH SPRING
72	PT27417072	CORD CLAMP
73	PT27417073	INT TOOTH WASHER 4MM
75	PT27417075	TAP SCREW M4 X 20
76	PT27417076	FLAT WASHER 6MM
77	PT27417077	BEARING COVER
78	PT27417078	TAP SCREW M4 X 16
79	PT27417079	BEARING SLEEVE (UPPER)
80	PT27417080	COMPRESSION SPRING
81	PT27417081	SPINDLE
83	PT27417083	WOODRUFF KEY 5 X 19
84	PT27417084	FLAT WASHER 17MM
85	PT27417085	WASHER 17.2 X 25.5 X 1.5MM
86	PT27417086	PULLEY PLATE
87	PT27417087	PULLEY (LOWER)
88	PT27417088	BELT 3/8" X 160XL
89	PT27417089	BELT 1/4" X 160XL
90	PT27417090	PULLY (UPPER)
91	PT27417091	BEARING SLEEVE (LOWER)
92	PT27417092	SWITCH PLATE, METAL
93	PT27417093	SWITCH PLATE, PLASTIC
95	PT27417095	SWITCH ORIENTATION PLATE
96	PT27417096	SAFETY PADDLE SWITCH
97	PT27417097	SWITCH SHIELD
99	PT27417099	PHLP HD SCR M4-.7 X 15

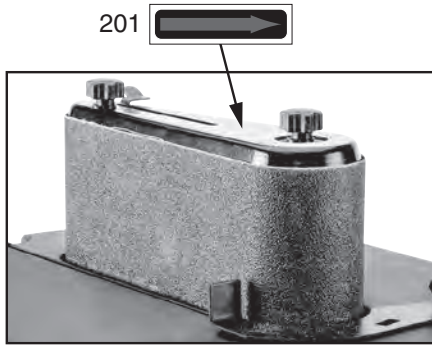


# Main Parts List (Cont.)

REF	PART #	DESCRIPTION
100	PT27417100	SPINDLE NUT WRENCH 13MM
102	PT27417102	THROAT PLATE 1" ID
103	PT27417103	STAR KNOB M8-1.25, 60MM OD
107	PT27417107	CAP SCREW M8-1.25 X 30
108	PT27417108	THROAT PLATE 3/4" ID
111	PT27417111	THROAT PLATE 1/2" ID
113	PT27417113	SPINDLE WASHER 8 X 20 X 3MM
114	PT27417114	RUBBER FOOT
116	PT27417116	SPINDLE WASHER 8 X 15 X 3MM
117	PT27417117	SPINDLE WASHER 8 X 46 X 3MM
118	PT27417118	SANDING SLEEVE 2", 80-GRIT
119	PT27417119	SANDING SLEEVE 1-1/2", 80-GRIT
120	PT27417120	SANDING SLEEVE 1", 80-GRIT
121	PT27417121	SANDING SLEEVE 3/4", 80-GRIT
122	PT27417122	SANDING SLEEVE 1/2", 80-GRIT

REF	PART #	DESCRIPTION
124	PT27417124	ANGLE PLATE BRACKET
125	PT27417125	BASE
126	PT27417126	PHLP HD SCR M5-.8 X 8
127	PT27417127	TABLE INSERT
128	PT27417128	STRAIN RELIEF 1/2" TYPE-1
130	PT27417130	POWER CORD 18G 2W 96" 1-15P
131	PT27417131	CORD CLAMP
132	PT27417132	THROAT PLATE 1.5" ID
133	PT27417133	THROAT PLATE 2" ID
134	PT27417134	BOTTOM GUARD
135	PT27417135	VENTED MOTOR COVER
136A	PT27417136A	BRUSH ASSEMBLY
137	PT27417137	KNOB M8-1.25, 18MM L (FEMALE)
138A	PT27417138A	MOTOR ASSEMBLY

# Labels



201

202

<b>Grizzly Industrial</b>	
<b>MODEL T27417 OSCILLATING EDGE BELT &amp; SPINDLE SANDER</b>	
<b>Specifications</b>	<b>⚠ WARNING!</b>
Motor: 450W (1/2 HP), 120V, 60 Hz, 3.5A Motor Speed: 11,500 RPM Belt Size: 4" x 24" Belt Speed: 1575 FPM Drum Diameter: 1/2", 3/4", 1", 1-1/2", 2" Drum Length: 4-1/2" Spindle Speed: 0-2000 RPM Spindle Oscillation: 90° CPM Stroke Length: 5/8" Table Tilt: 0°-45° Weight: 27 lbs.	To reduce the risk of serious injury while using this machine: 1. Read and understand owner's manual before operating. 2. Always wear approved eye protection and respirator. 3. Support workpiece with backstop or worktable. 4. Maintain 1/16" maximum clearance between backstop and sandpaper. 5. Always sand in accordance with directional arrows on machine. 6. Make sure sander is properly assembled, adjusted, and stable before operating. Only operate with all guards in place. 7. Never sand pointed stock with leading edge pointing into sanding rotation, and never force workpiece into sanding surface, making adjustments, servicing, or removing jammed stock. 8. Turn motor OFF and disconnect power before changing sandpaper, making adjustments, servicing, or removing jammed stock. 9. Do not wear loose clothing, gloves, jewelry, or other articles that can get entangled. Tie back long hair and roll up sleeves. 10. Do not expose to rain or use in damp locations. 11. Prevent unauthorized use by children or untrained users.
Date: _____ SN: _____ Manufactured for Grizzly in China	 



208



207

 <b>⚠ WARNING!</b> <b>INJURY/SHOCK HAZARD!</b> Disconnect power before adjustments, maintenance, or service.	 <b>⚠ WARNING!</b> <b>ENTANGLEMENT HAZARD!</b> Tie back long hair, roll up long sleeves, and remove loose clothing, jewelry, or gloves to prevent getting caught in moving parts.	 <b>⚠ WARNING!</b> <b>EYEING INJURY HAZARD!</b> Always wear safety glasses and a respirator when using this machine.	 <b>⚠ WARNING!</b> To reduce risk of death or serious injury, read manual BEFORE using machine. To get a new manual, call (800) 523-4777 or go to <a href="http://www.grizzly.com">www.grizzly.com</a> .
--	---	--	---

209

REF	PART #	DESCRIPTION
201	PT27417201	BELT DIRECTION LABEL
202	PT27417202	MACHINE ID LABEL
207	PT27417207	ELECTRICITY LABEL

REF	PART #	DESCRIPTION
208	PT27417208	GRIZZLY INDUSTRIAL LOGO LABEL
209	PT27417209	COMBO WARNINGS LABEL

## ⚠ WARNING

Safety labels help reduce the risk of serious injury caused by machine hazards. If any label comes off or becomes unreadable, the owner of this machine **MUST** replace it in the original location before resuming operations. For replacements, contact (800) 523-4777 or [www.grizzly.com](http://www.grizzly.com).

