

READ THIS FIRST



Model T31637/T31638

*****IMPORTANT UPDATE*****

**For Machines Mfd. Since 04/22
and Owner's Manual Revised 02/20**

For questions or help with this product contact Tech Support at (570) 546-9663 or techsupport@grizzly.com

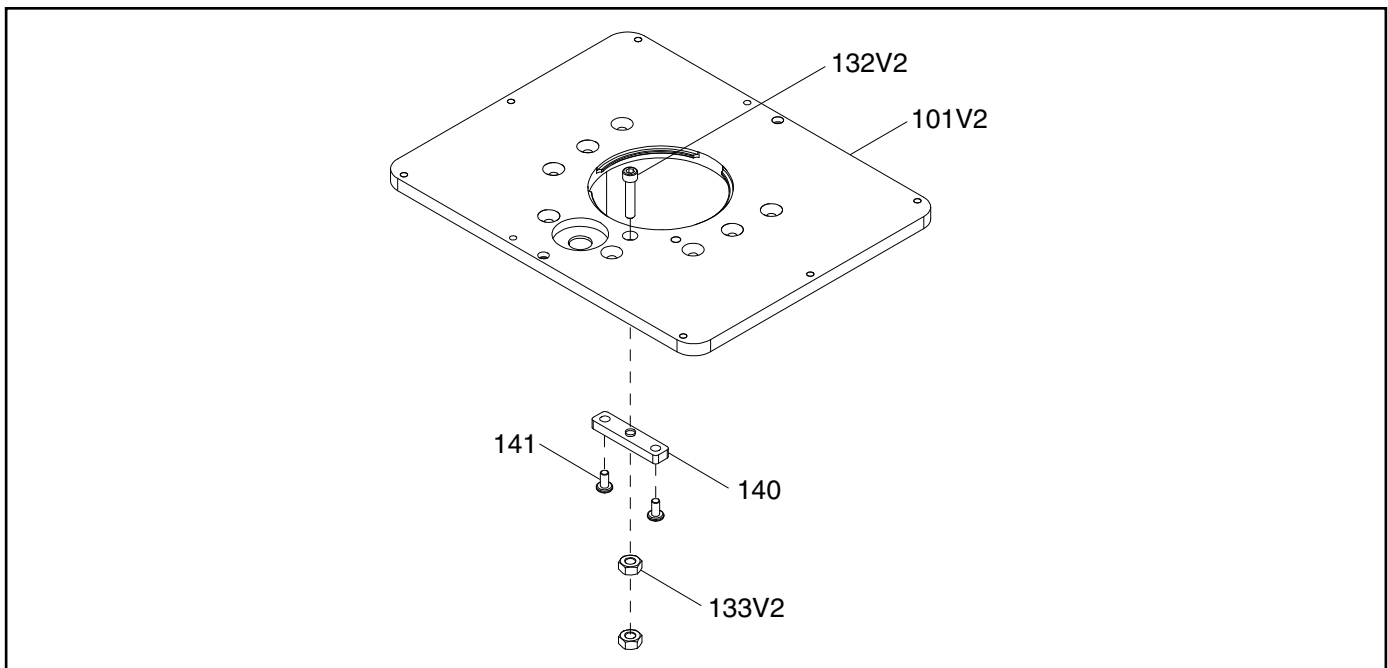
The following changes were recently made since the owner's manual was printed:

- Parts have changed.
- Manual sub-section **Adjusting Router Height** has changed.

Aside from this information, all other content in the owner's manual applies and **MUST** be read and understood for your own safety. **IMPORTANT: Keep this update with the owner's manual for future reference.**

For questions or help, contact our Tech Support at (570) 546-9663 or techsupport@grizzly.com.

Revised Parts



REF	PART #	DESCRIPTION
101V2	PT31637101V2	MOUNTING PLATE 12" X 9" V2.04.22
101V2	PT31638101V2	MOUNTING PLATE 11-3/4" X 9-1/4" V2.04.22
132V2	PT31637132V2	CAP SCREW M6-1 X 30 V2.04.22

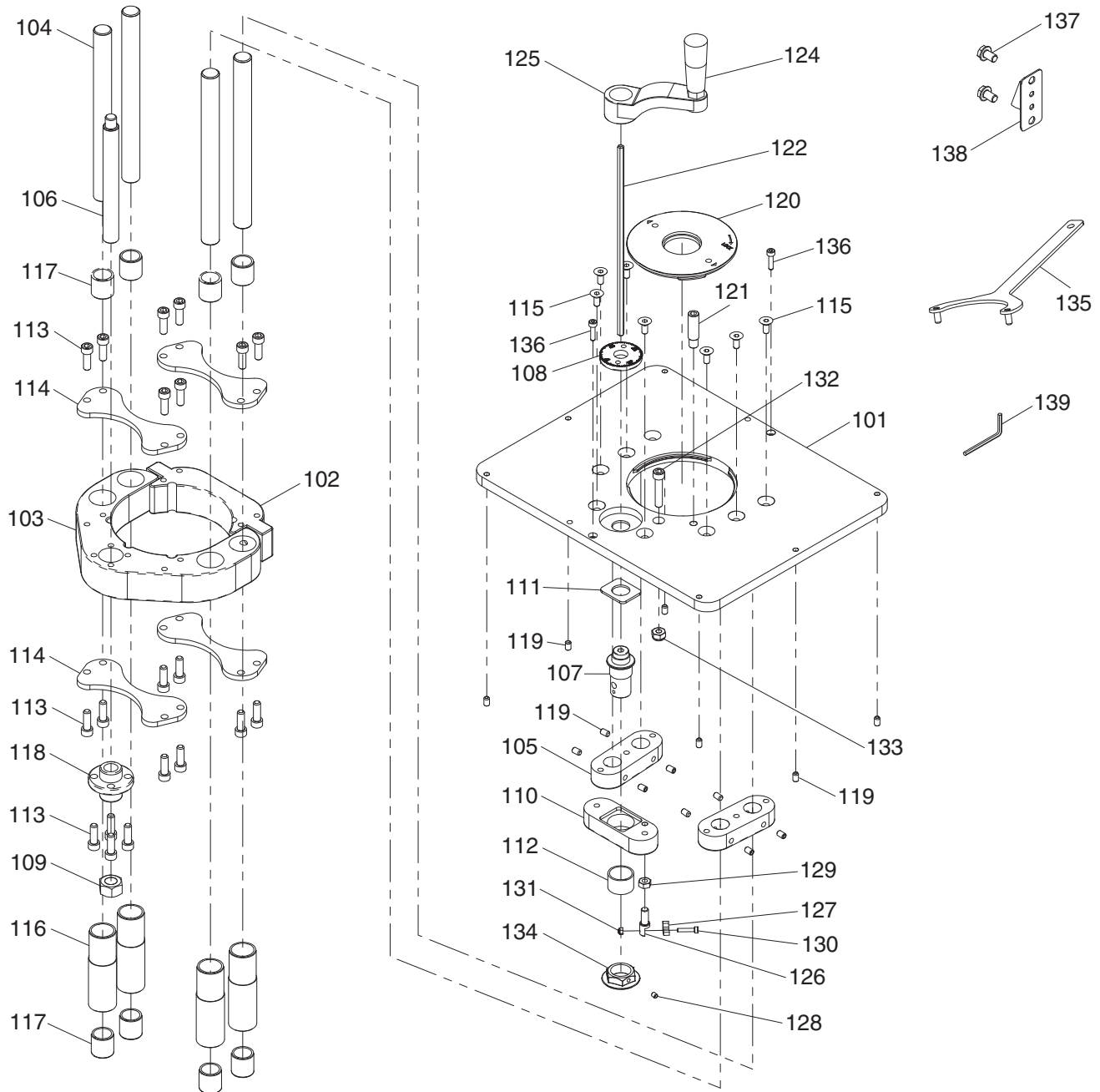
REF	PART #	DESCRIPTION
133V2	PT31637133V2	HEX NUT M6-1 V2.04.22
140	PT31637140	THREADED ADJUSTMENT BRACKET
141	PT31637141	PHLP HD SCR M4-.7 X 8

COPYRIGHT © NOVEMBER, 2023 BY GRIZZLY INDUSTRIAL, INC.
**WARNING: NO PORTION OF THIS MANUAL MAY BE REPRODUCED IN ANY SHAPE
OR FORM WITHOUT THE WRITTEN APPROVAL OF GRIZZLY INDUSTRIAL, INC.**
#MN22936 PRINTED IN TAIWAN

SECTION 7: PARTS

We do our best to stock replacement parts when possible, but we cannot guarantee that all parts shown are available for purchase. Call (800) 523-4777 or visit www.grizzly.com/parts to check for availability.

Main



Main Parts List

REF	PART #	DESCRIPTION
101	PT31637101	MOUNTING PLATE 12" X 9" (T31637)
101	PT31638101	MOUNTING PLATE 11-3/4" X 9-1/4" (T31638)
102	PT31637102	CLAMP BLOCK
103	PT31637103	SLIDE BLOCK
104	PT31637104	CLAMP GUIDE
105	PT31637105	CLAMP GUIDE MOUNT
106	PT31637106	LEADSCREW M14-1.5 X 135
107	PT31637107	LEADSCREW CONNECTOR
108	PT31637108	INDEX RING
109	PT31637109	HEX NUT M14-2
110	PT31637110	LEADSCREW MOUNT
111	PT31637111	COPPER PLATE
112	PT31637112	BUSHING 20 X 24 X 12 (COPPER)
113	PT31637113	CAP SCREW 1/4-20 X 3/4
114	PT31637114	ROUTER CLAMP PLATE
115	PT31637115	FLAT HD CAP SCR 1/4-20 X 1/2
116	PT31637116	GUIDE TUBE (ALUMINUM)
117	PT31637117	BUSHING 16 X 20 X 20 (COPPER)
118	PT31637118	LEADSCREW PILOT NUT M14-1.5
119	PT31637119	SET SCREW M6-1 X 6

REF	PART #	DESCRIPTION
120	PT31637120	TABLE INSERT 1-1/4"
121	PT31637121	STARTING PIN
122	PT31637122	HEX SHAFT 5 X 175
124	PT31637124	FIXED HANDLE 22 X 77, M10-1.5 X 14
125	PT31637125	CRANK M10-1.5, 95L
126	PT31637126	ROCKER ARM MOUNT 1/4-20 X 1/2
127	PT31637127	ROCKER ARM
128	PT31637128	SET SCREW M4-.7 X 5
129	PT31637129	HEX NUT 1/4-20
130	PT31637130	CAP SCREW M3-.5 X 16
131	PT31637131	LOCK NUT M3-.5
132	PT31637132	CAP SCREW 1/4-20 X 1-1/4
133	PT31637133	LOCK NUT 1/4-20
134	PT31637134	BRAKE DISC
135	PT31637135	SPANNER WRENCH 70MM PIN-TYPE
136	PT31637136	CAP SCREW M4-.7 X 16
137	PT31637137	FLANGE BOLT 5/16-18 X 1/2
138	PT31637138	ROUTER LIFT CRANK HOLDER
139	PT31637139	HEX WRENCH 3MM

