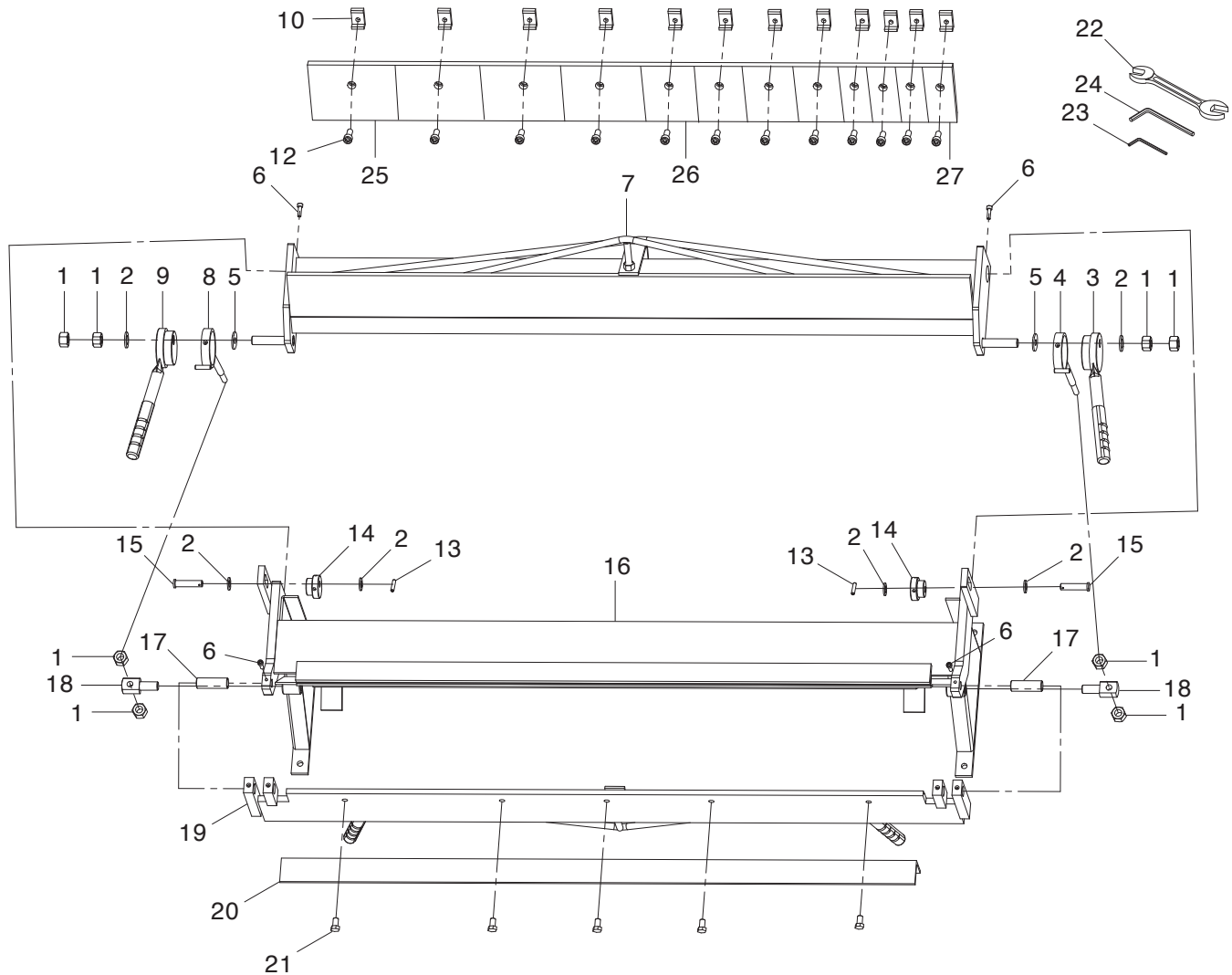


# SECTION 7: PARTS

## Main



### REF PART # DESCRIPTION

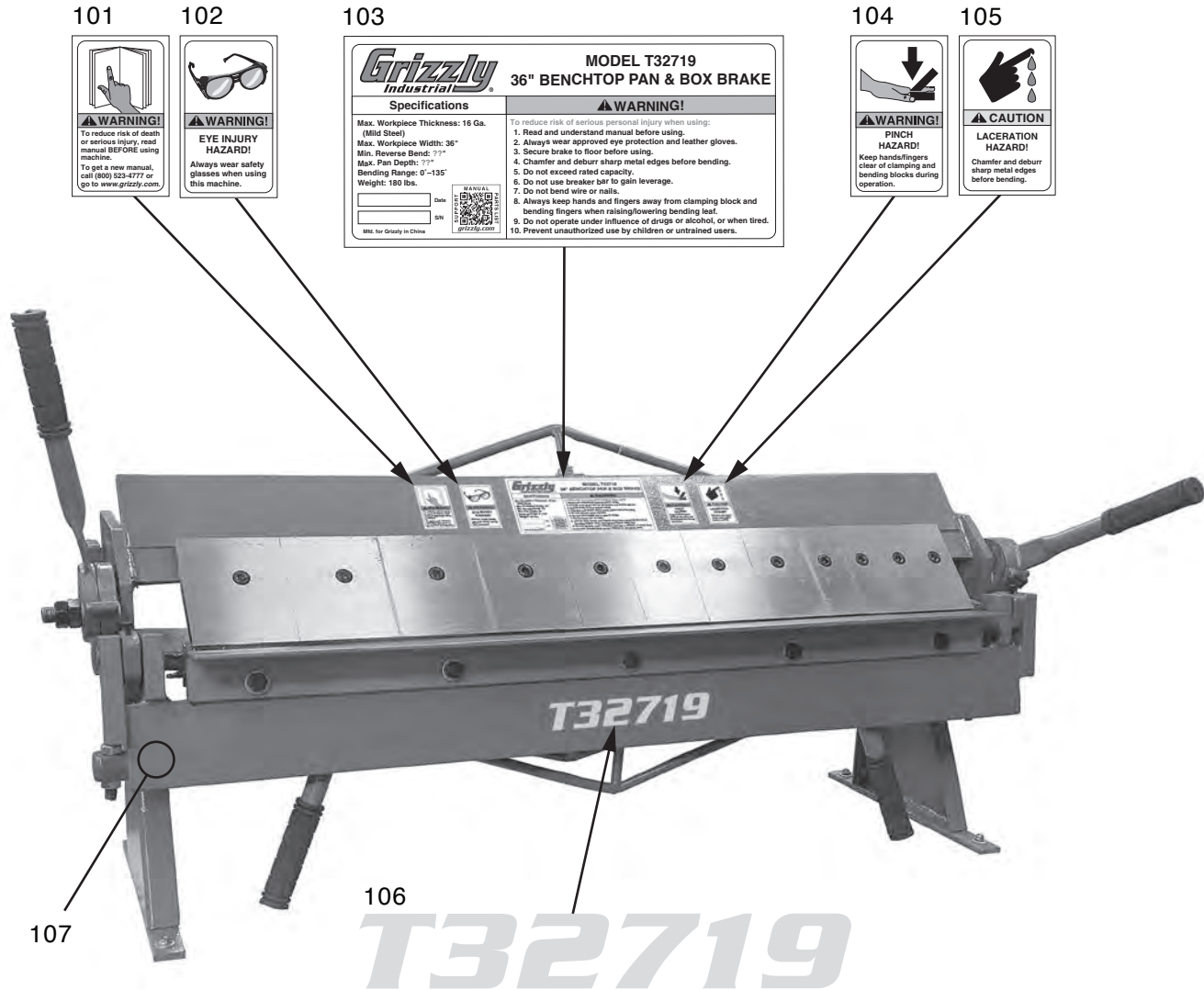
1	PT32719001	HEX NUT M16-2
2	PT32719002	FLAT WASHER 16MM
3	PT32719003	HANDLE (RIGHT)
4	PT32719004	SWIVEL ROD (RIGHT)
5	PT32719005	FLAT WASHER 16MM
6	PT32719006	CAP SCREW M6-1 X 16
7	PT32719007	CLAMPING LEAF
8	PT32719008	SWIVEL ROD (LEFT)
9	PT32719009	HANDLE (LEFT)
10	PT32719010	TOE CLAMP M10-1.5
12	PT32719012	CAP SCREW M10-1.5 X 25
13	PT32719013	ROLL PIN 4 X 30
14	PT32719014	PIVOT SHAFT

### REF PART # DESCRIPTION

15	PT32719015	ECCENTRIC SHAFT
16	PT32719016	STAND
17	PT32719017	BUSHING
18	PT32719018	BENDING LEAF PIVOT SHAFT
19	PT32719019	BENDING LEAF
20	PT32719020	BENDING BLOCK
21	PT32719021	HEX BOLT M12-1.75 X 20
22	PT32719022	WRENCH 17 X 19MM OPEN-ENDS
23	PT32719023	HEX WRENCH 5MM
24	PT32719024	HEX WRENCH 8MM
25	PT32719025	CLAMPING FINGER 4"
26	PT32719026	CLAMPING FINGER 3"
27	PT32719027	CLAMPING FINGER 2"



# Labels & Cosmetics



REF	PART #	DESCRIPTION
101	PT32719101	READ MANUAL LABEL
102	PT32719102	WEAR GLASSES LABEL
103	PT32719103	MACHINE ID LABEL
104	PT32719104	PINCH HAZARD LABEL

REF	PART #	DESCRIPTION
105	PT32719105	LACERATION HAZARD LABEL
106	PT32719106	MODEL NUMBER LABEL
107	PT32719107	TOUCH-UP PAINT, GRIZZLY GREEN

## WARNING

Safety labels help reduce the risk of serious injury caused by machine hazards. If any label comes off or becomes unreadable, the owner of this machine **MUST** replace it in the original location before resuming operations. For replacements, contact (800) 523-4777 or [www.grizzly.com](http://www.grizzly.com).

We do our best to stock replacement parts when possible, but we cannot guarantee that all parts shown are available for purchase. Call **(800) 523-4777** or visit [www.grizzly.com/parts](http://www.grizzly.com/parts) to check for availability.

