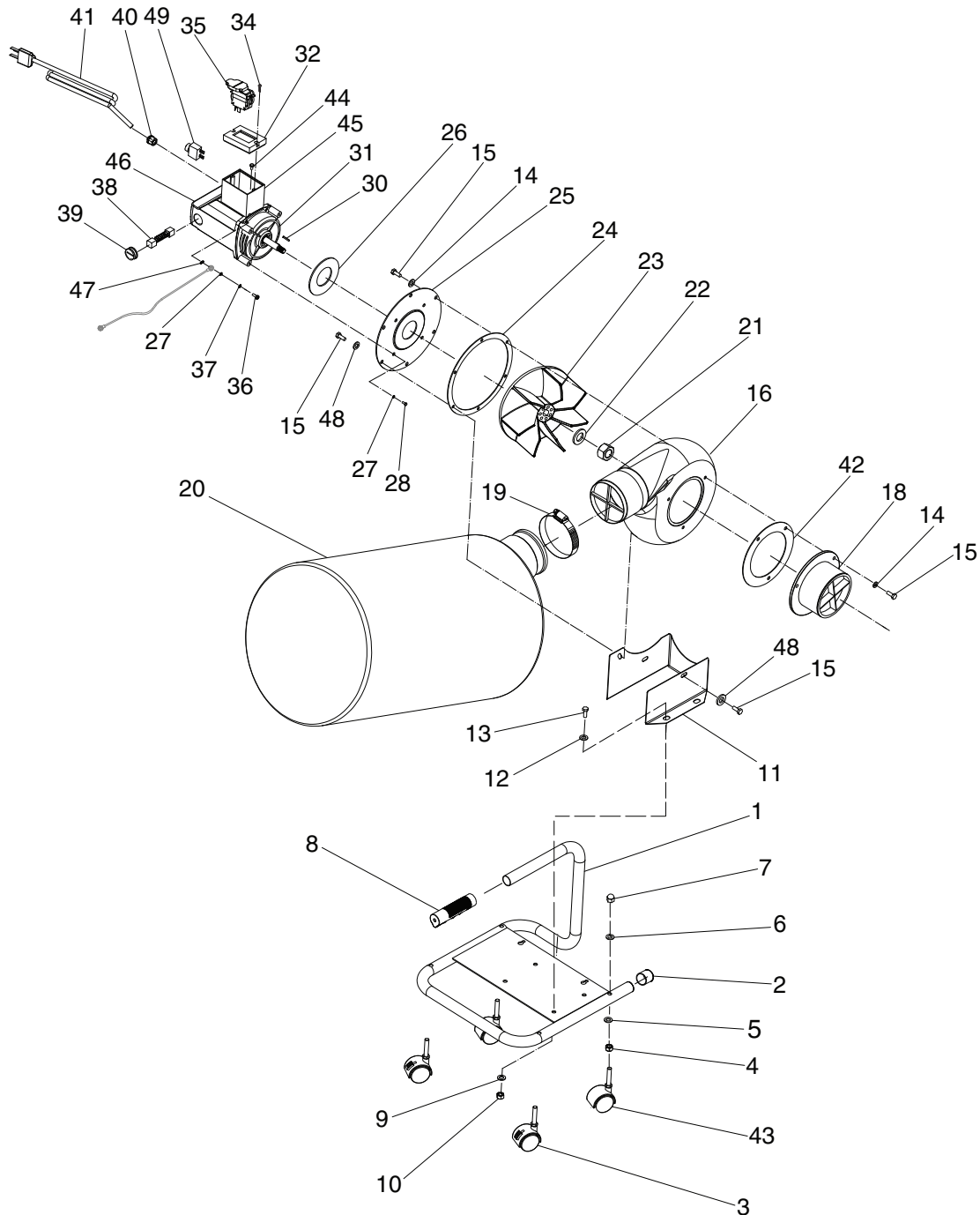


SECTION 9: PARTS

We do our best to stock replacement parts when possible, but we cannot guarantee that all parts shown are available for purchase. Call **(800) 523-4777** or visit **www.grizzly.com/parts** to check for availability.

Main



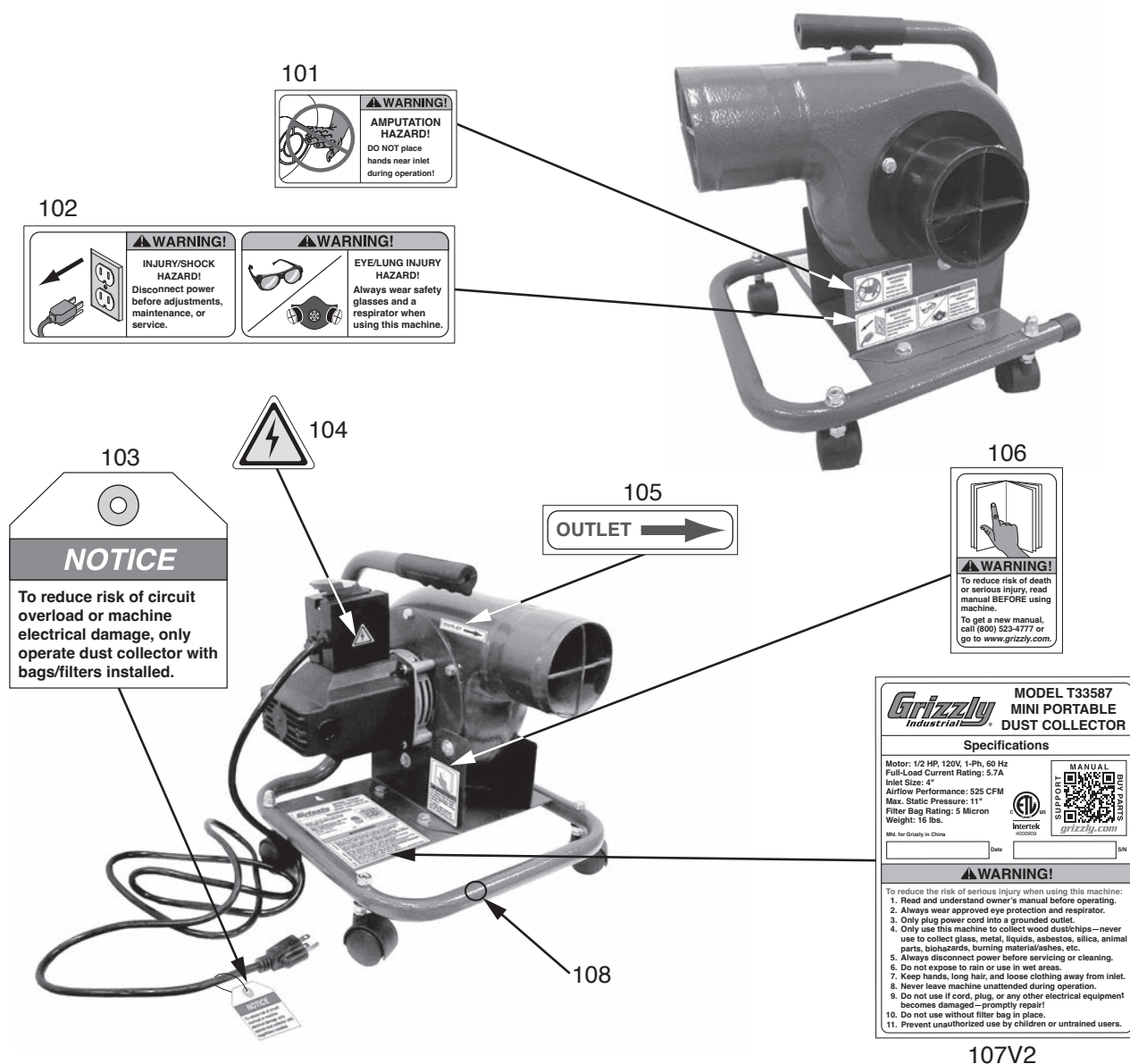
Main Parts List

REF PART #	DESCRIPTION
1	PT33587001 FRAME
2	PT33587002 END CAP
3	PT33587003 CASTER 2" LOCKING
4	PT33587004 HEX NUT M8-1.25
5	PT33587005 FLAT WASHER 8MM
6	PT33587006 FLAT WASHER 8MM
7	PT33587007 ACORN NUT M8-1.25
8	PT33587008 HANDLE GRIP
9	PT33587009 FLAT WASHER 8MM
10	PT33587010 HEX NUT M8-1.25
11	PT33587011 COLLECTOR BRACKET
12	PT33587012 FLAT WASHER 8MM
13	PT33587013 HEX BOLT M8-1.25 X 16
14	PT33587014 FLAT WASHER 6MM
15	PT33587015 HEX BOLT M6-1 X 14
16	PT33587016 COLLECTOR BODY
18	PT33587018 INLET 4"
19	PT33587019 BAG CLAMP 4"
20	PT33587020 FILTER BAG 2.5 MICRON
21	PT33587021 HEX NUT M10-1.5
22	PT33587022 FLAT WASHER 10MM
23	PT33587023 IMPELLER 6" NYLON
24	PT33587024 GASKET 160 X 184 X 1.5

REF PART #	DESCRIPTION
25	PT33587025 MOTOR FLANGE
26	PT33587026 GASKET 42 X 83 X 2.5
27	PT33587027 LOCK WASHER 5MM
28	PT33587028 HEX BOLT M5-.8 X 10
30	PT33587030 KEY 4 X 4 X 20
31	PT33587031 MOTOR MOUNT
32	PT33587032 SWITCH COVER
34	PT33587034 PHLP HD SCR M3-.5 X 12
35	PT33587035 PADDLE SWITCH KEDU HY18 125V
36	PT33587036 PHLP HD SCR M5-.8 X 20
37	PT33587037 LOCK WASHER 5MM
38	PT33587038 MOTOR BRUSH
39	PT33587039 COVER
40	PT33587040 STRAIN RELIEF TYPE-5/16
41	PT33587041 POWER CORD 90" 5-15P 3W
42	PT33587042 GASKET 102 X 128 X 1.5
43	PT33587043 CASTER 2" SWIVEL
44	PT33587044 TAP SCREW M4 X 10
45	PT33587045 SWITCH BOX
46	PT33587046 MOTOR 1HP 120V 1/2-PH
47	PT33587047 FLAT WASHER 5MM
48	PT33587048 FENDER WASHER 6MM
49	PT33587049 CIRCUIT BREAKER TOPSTONE TC-1



Labels & Cosmetics



REF	PART #	DESCRIPTION
101	PT33587101	AMPUTATION HAZARD LABEL
102	PT33587102	COMBO WARNING LABEL
103	PT33587103	NOTICE HANG TAG
104	PT33587104	ELECTRICITY LABEL

REF	PART #	DESCRIPTION
105	PT33587105	OUTLET LABEL
106	PT33587106	READ MANUAL LABEL
107V2	PT33587107V2	MACHINE ID LABEL V2.04.24
108	PT33587108	TOUCH-UP PAINT, GRIZZLY GREEN

WARNING

Safety labels help reduce the risk of serious injury caused by machine hazards. If any label comes off or becomes unreadable, the owner of this machine **MUST** replace it in the original location before resuming operations. For replacements, contact (800) 523-4777 or www.grizzly.com.

