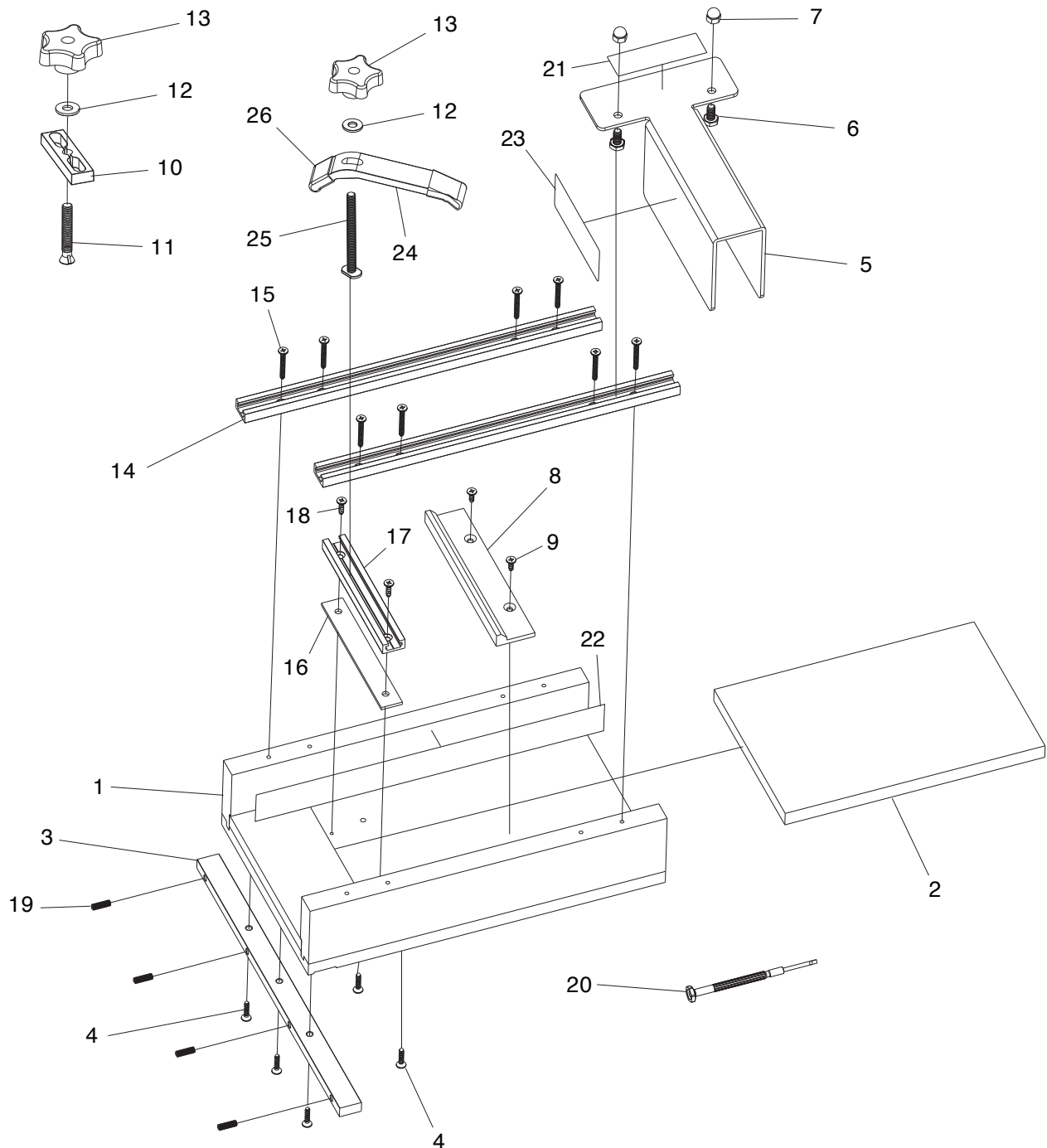


SECTION 6: PARTS

We do our best to stock replacement parts when possible, but we cannot guarantee that all parts shown are available for purchase. Call **(800) 523-4777** or visit **www.grizzly.com/parts** to check for availability.

Main



Main Parts List

REF	PART #	DESCRIPTION
1	PT33987001	SLED BODY
2	PT33987002	ZERO CLEARANCE INSERT
3	PT33987003	MITER BAR
4	PT33987004	WOOD SCREW #8 X 3/4
5	PT33987005	BLADE GUARD
6	PT33987006	HEX BOLT 1/4-20 X 1/2
7	PT33987007	ACORN NUT 1/4-20
8	PT33987008	CUT-OFF RAMP
9	PT33987009	WOOD SCREW #8 X 1/2
10	PT33987010	SLED STOP
11	PT33987011	FLAT HD SCR 5/16-18 X 2
12	PT33987012	FLAT WASHER 5/16"
13	PT33987013	KNOB 5/16-18, 5-LOBE, D2-1/8

REF	PART #	DESCRIPTION
14	PT33987014	FENCE T-TRACK
15	PT33987015	WOOD SCREW #8 X 1-1/4
16	PT33987016	SLED TRACK GASKET
17	PT33987017	SLED T-TRACK
18	PT33987018	TAP SCREW #8 X 1/2 BLUNT
19	PT33987019	SET SCREW 10-32 X 3/8 SLOTTED NYLON
20	PT33987020	SCREWDRIVER FLAT 1/8
21	PT33987021	AMPUTATION HAZARD LABEL SMALL
22	PT33987022	INSTABILITY HAZARD LABEL
23	PT33987023	AMPUTATION HAZARD LABEL LARGE
24	PT33987024	HOLD-DOWN CLAMP
25	PT33987025	T-BOLT 5/16-18 X 3-1/2
26	PT33987026	CLAMP GRIP

WARNING

Safety labels help reduce the risk of serious injury caused by machine hazards. If any label comes off or becomes unreadable, the owner of this machine **MUST** replace it in the original location before resuming operations. For replacements, contact (800) 523-4777 or www.grizzly.com.

