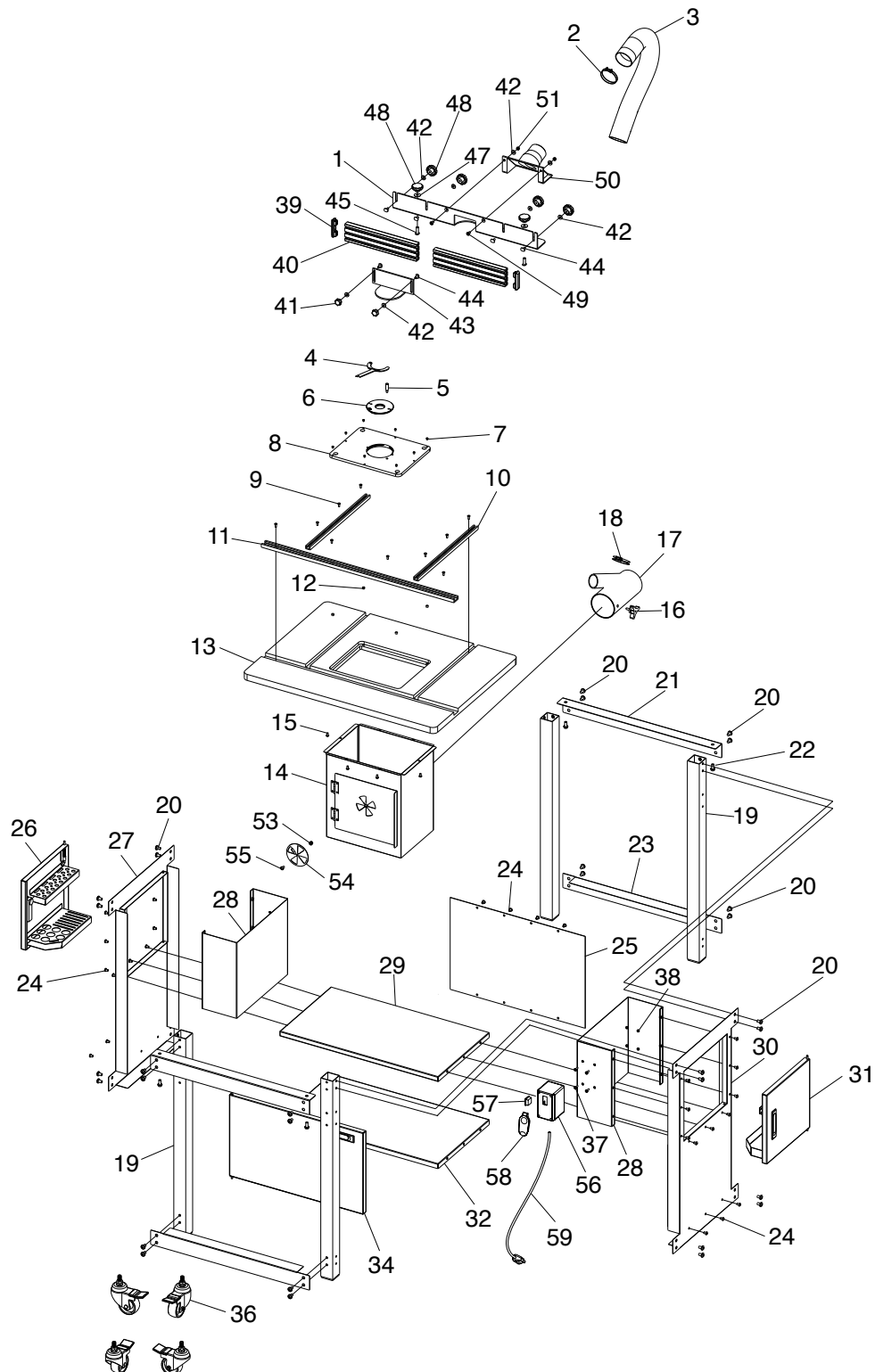


SECTION 9: PARTS

We do our best to stock replacement parts when possible, but we cannot guarantee that all parts shown are available for purchase. Call **(800) 523-4777** or visit **www.grizzly.com/parts** to check for availability.

Main



Main Parts List

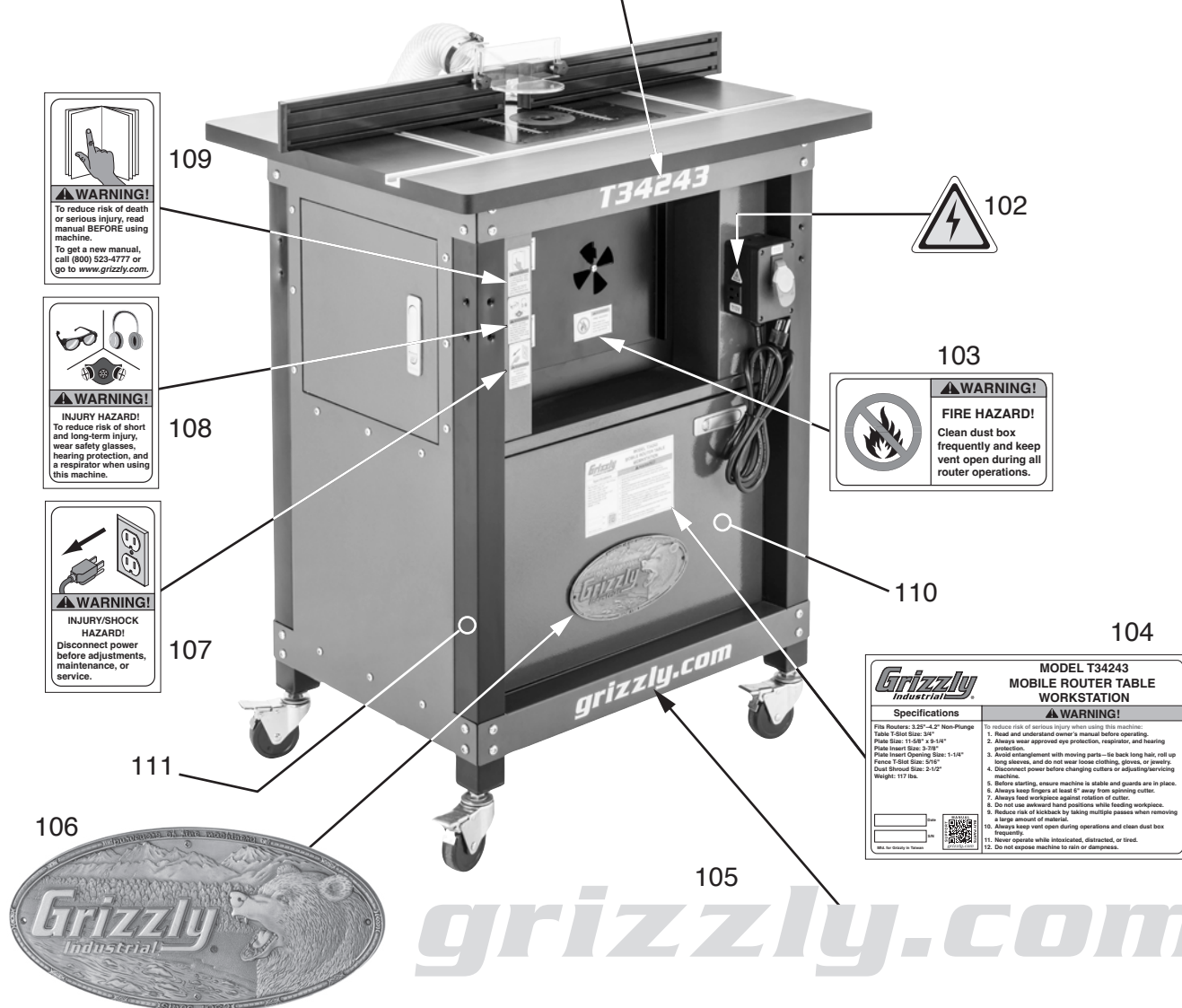
REF	PART #	DESCRIPTION
1	PT34243001	FENCE BASE
2	PT34243002	WIRE HOSE CLAMP 2"
3	PT34243003	DUST HOSE 2-1/2" X 28"
4	PT34243004	SPANNER WRENCH 70MM PIN-TYPE
5	PT34243005	STARTING PIN
6	PT34243006	INSERT 1-1/4"
7	PT34243007	SET SCREW M6-1 X 6
8	PT34243008	MOUNTING PLATE 11-5/8" X 9-1/4"
9	PT34243009	FLAT HD SCR 10-24 X 1/2
10	PT34243010	T-TRACK 5/16" X 17-1/8"
11	PT34243011	T-TRACK 3/4" X 31-3/4"
12	PT34243012	MAGNET 8 X 5MM
13	PT34243013	TABLE
14	PT34243014	DUST BOX
15	PT34243015	PHLP HD SCR 10-24 X 3/8
16	PT34243016	KNOB BOLT 1/4-20 X 1/2
17	PT34243017	Y-FITTING 4" X 4" X 2-1/2"
18	PT34243018	WIRE HOSE CLAMP 2"
19	PT34243019	LEG
20	PT34243020	BUTTON HD CAP SCR 5/16-18 X 1/2
21	PT34243021	BRACE, UPPER
22	PT34243022	FLANGE BOLT 5/16-18 X 1/2
23	PT34243023	BRACE, LOWER
24	PT34243024	BUTTON HD CAP SCR 1/4-20 X 1/2
25	PT34243025	PANEL, BACK
26	PT34243026	DOOR, LEFT
27	PT34243027	SIDE PANEL, LEFT
28	PT34243028	SIDE PARTITION

REF	PART #	DESCRIPTION
29	PT34243029	SHELF, MIDDLE
30	PT34243030	SIDE PANEL, RIGHT
31	PT34243031	DOOR, RIGHT
32	PT34243032	SHELF, BOTTOM
34	PT34243034	DOOR, FRONT
36	PT34243036	CASTER 3" LOCKING SWIVEL
37	PT34243037	PHLP HD SCR 10-24 X 5/8
38	PT34243038	LOCK NUT 10-24
39	PT34243039	END CAP
40	PT34243040	INFEED/OUTFEED FENCE
41	PT34243041	KNOB 1/4-20
42	PT34243042	FLAT WASHER 1/4
43	PT34243043	ROUTER BIT GUARD
44	PT34243044	CARRIAGE BOLT 1/4-20 X 3/4
45	PT34243045	T-BOLT 5/16-18 X 3/4
47	PT34243047	FLAT WASHER 1/4
48	PT34243048	KNOB 1/4-20
49	PT34243049	FLAT HD SCR 1/4-20 X 5/8
50	PT34243050	DUST SHROUD 2-1/2"
51	PT34243051	HEX NUT 1/4-20
53	PT34243053	LOCK NUT 1/4-20
54	PT34243054	DUST BOX VENT PLATE
55	PT34243055	BUTTON HD CAP SCR 1/4-20 X 1/2
56	PT34243056	SWITCH BOX
57	PT34243057	ELECTRICAL OUTLET 15A 125V
58	PT34243058	ON/OFF PADDLE SWITCH 125V
59	PT34243059	POWER CORD 14G 3W 72" 5-15P



Labels & Cosmetics

T34243 101



REF	PART #	DESCRIPTION
101	PT34243101	MODEL NUMBER LABEL
102	PT34243102	ELECTRICITY LABEL
103	PT34243103	FIRE HAZARD LABEL
104	PT34243104	MACHINE ID LABEL
105	PT34243105	GRIZZLY.COM LABEL
106	PT34243106	GRIZZLY NAMEPLATE-SMALL

REF	PART #	DESCRIPTION
107	PT34243107	SHOCK HAZARD LABEL
108	PT34243108	EYE/EAR/LUNG INJURY LABEL
109	PT34243109	READ MANUAL LABEL
110	PT34243110	TOUCH-UP PAINT, GRIZZLY GREEN
111	PT34243111	TOUCH-UP PAINT, BLACK

! WARNING

Safety labels help reduce the risk of serious injury caused by machine hazards. If any label comes off or becomes unreadable, the owner of this machine **MUST** replace it in the original location before resuming operations. For replacements, contact (800) 523-4777 or www.grizzly.com.

