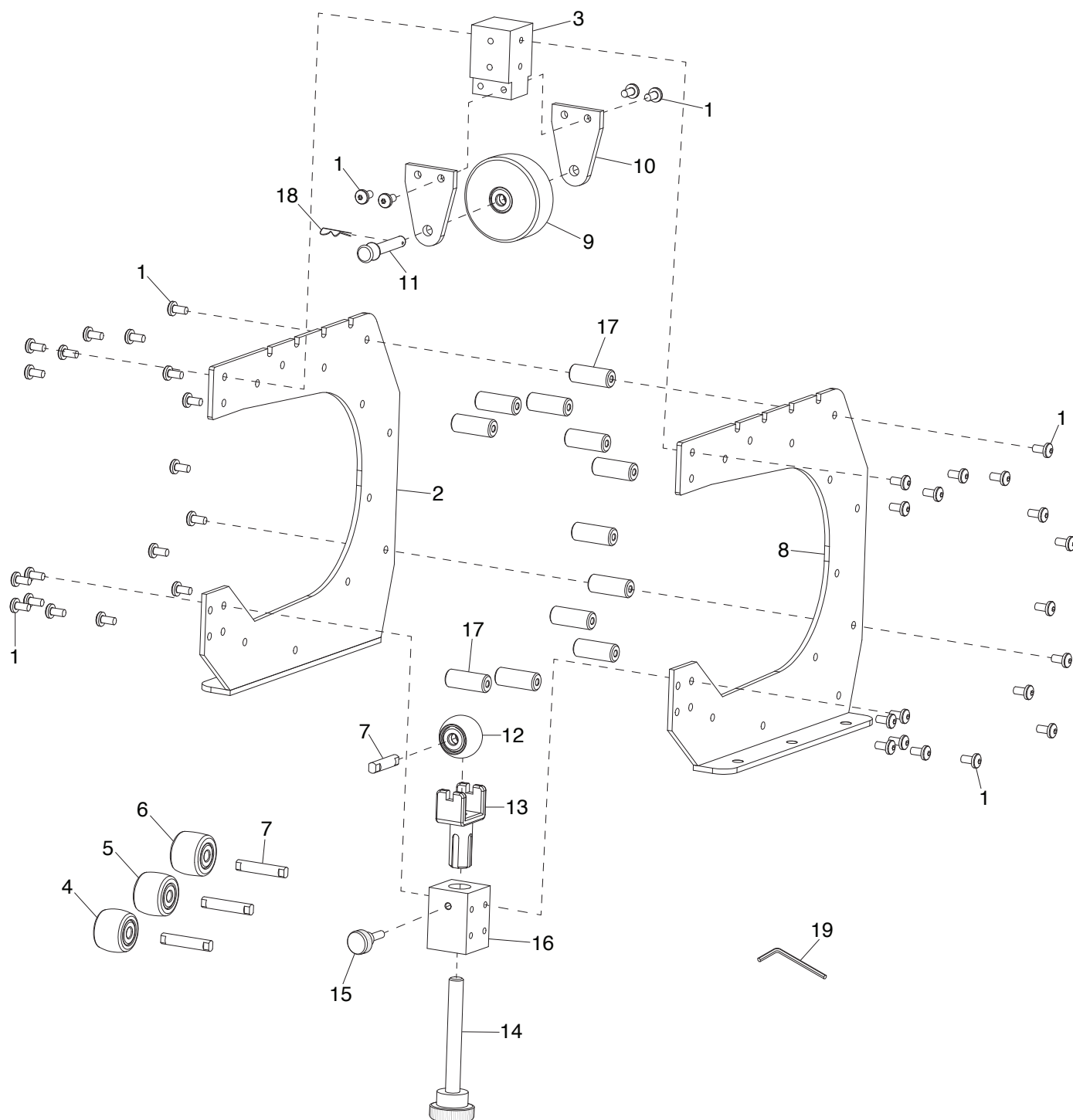


# SECTION 7: PARTS

We do our best to stock replacement parts when possible, but we cannot guarantee that all parts shown are available for purchase. Call **(800) 523-4777** or visit **[www.grizzly.com/parts](http://www.grizzly.com/parts)** to check for availability.

## Main



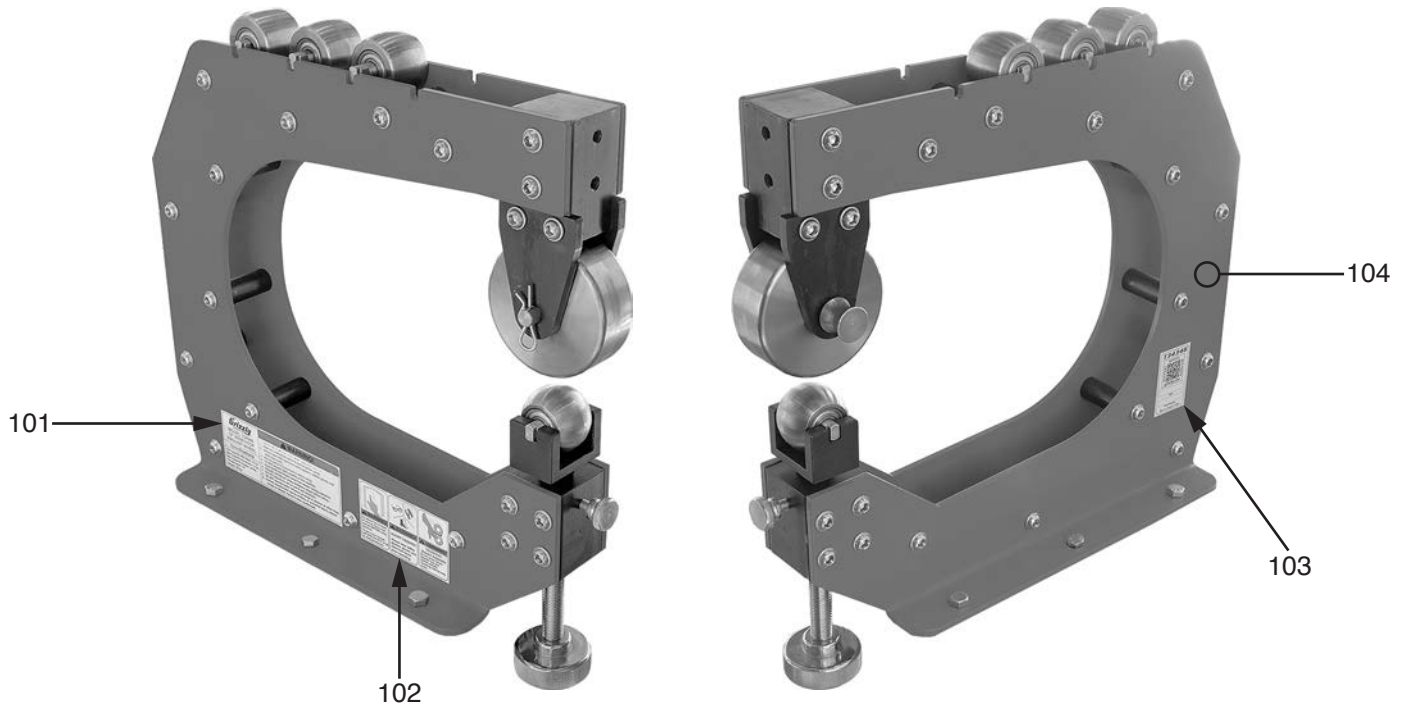
# Main Parts List

REF	PART #	DESCRIPTION
1	PT34346001	FLANGE SCREW M8-1.25 X 16
2	PT34346002	SIDE FRAME, LEFT
3	PT34346003	UPPER WHEEL BRACKET
4	PT34346004	LOWER WHEEL, DOMED 2" RADIUS
5	PT34346005	LOWER WHEEL, DOMED 3" RADIUS
6	PT34346006	LOWER WHEEL, DOMED 5" RADIUS
7	PT34346007	LOWER WHEEL AXLE
8	PT34346008	SIDE FRAME, RIGHT
9	PT34346009	UPPER WHEEL, 3-13/16" FLAT
10	PT34346010	UPPER WHEEL TAB

REF	PART #	DESCRIPTION
11	PT34346011	UPPER WHEEL AXLE
12	PT34346012	LOWER WHEEL, DOMED 1" RADIUS
13	PT34346013	LOWER WHEEL SADDLE
14	PT34346014	HANDWHEEL
15	PT34346015	KNOB BOLT M8-1.25 X 20
16	PT34346016	LOWER WHEEL BRACKET
17	PT34346017	FRAME SPACER
18	PT34346018	COTTER PIN 1-3MM X 46MM HAIRPIN
19	PT34346019	HEX WRENCH 6MM



# Labels & Cosmetics



REF	PART #	DESCRIPTION
101	PT34346101	MACHINE ID LABEL
102	PT34346102	COMBO WARNING LABEL

REF	PART #	DESCRIPTION
103	PT34346103	QR CODE LABEL
104	PT34346104	TOUCH-UP PAINT, GRIZZLY GREEN

## WARNING

Safety labels help reduce the risk of serious injury caused by machine hazards. If any label comes off or becomes unreadable, the owner of this machine **MUST** replace it in the original location before resuming operations. For replacements, contact (800) 523-4777 or [www.grizzly.com](http://www.grizzly.com).

