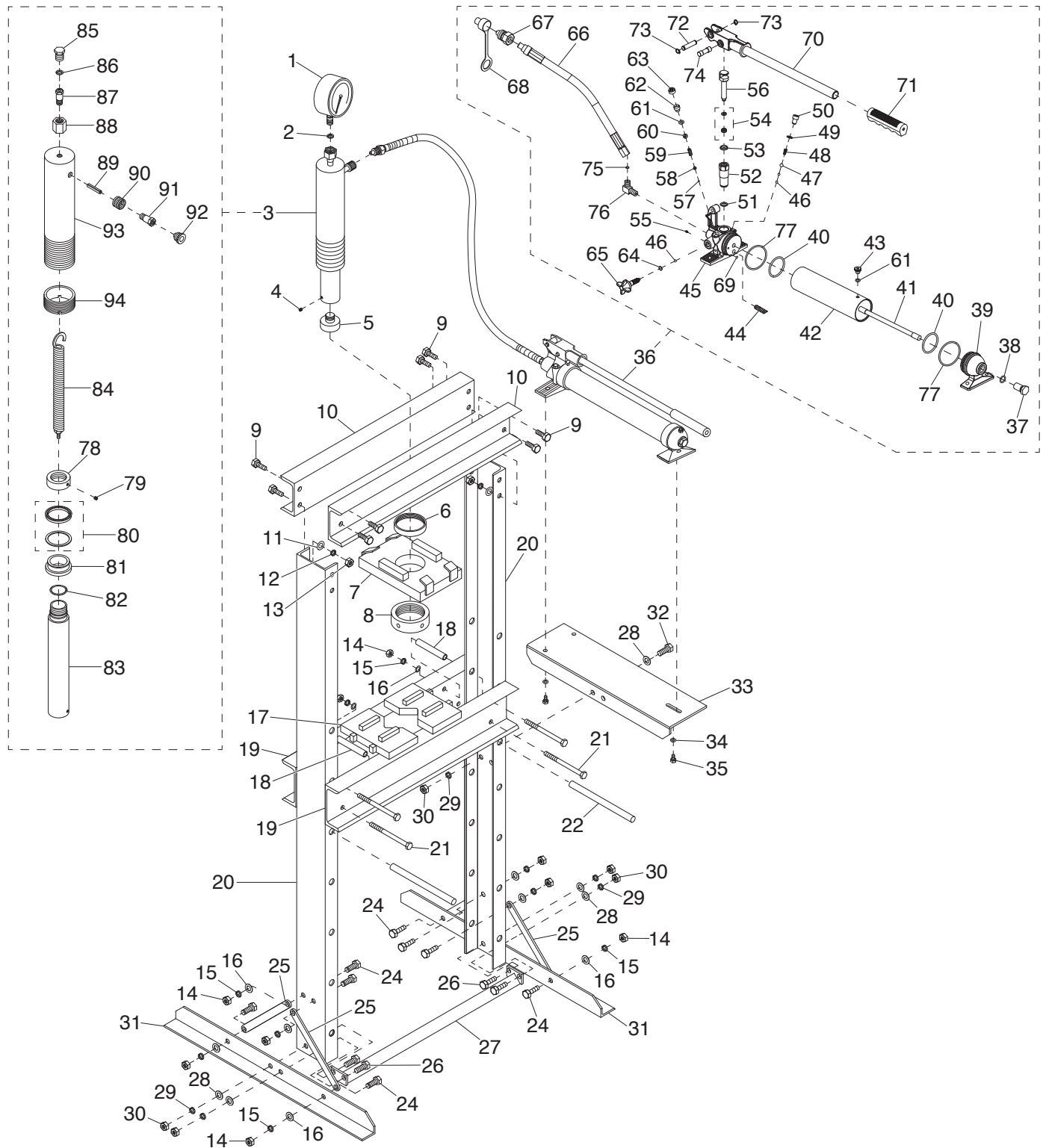


# SECTION 8: PARTS

We do our best to stock replacement parts when possible, but we cannot guarantee that all parts shown are available for purchase. Call **(800) 523-4777** or visit **[www.grizzly.com/parts](http://www.grizzly.com/parts)** to check for availability.

## Main



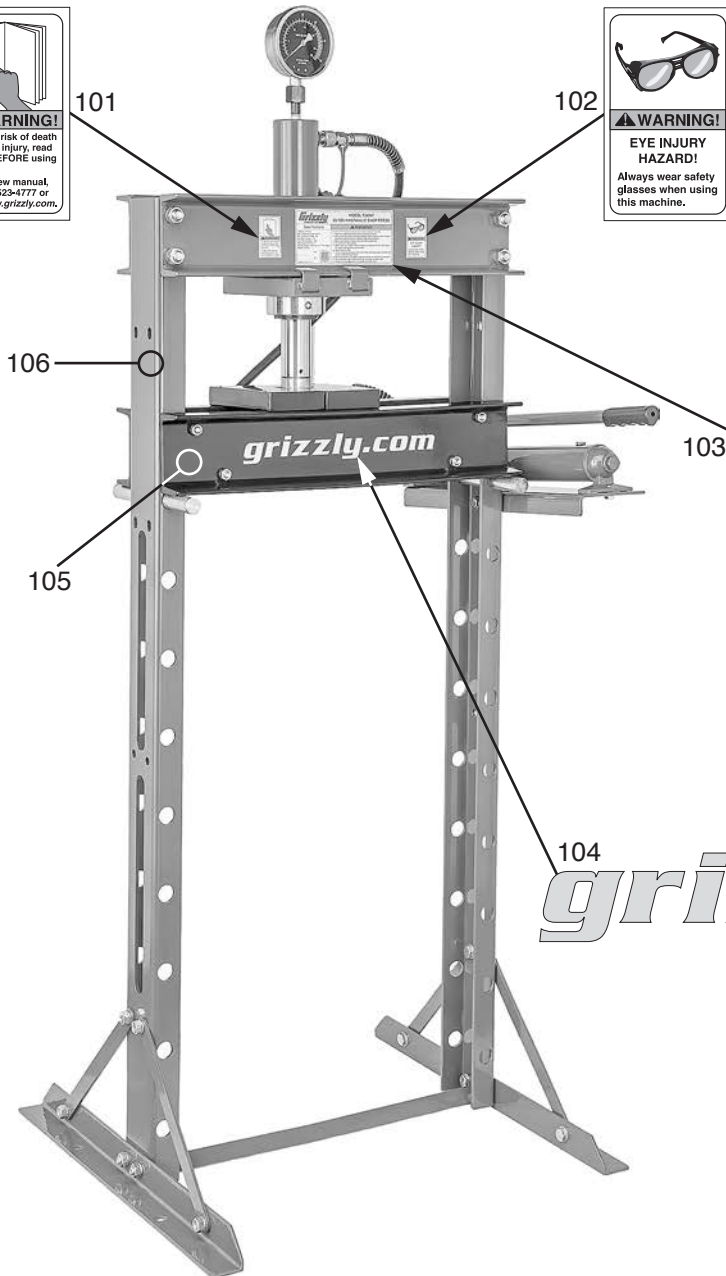
# Main Parts List

REF PART #	DESCRIPTION
1	PT34347001 PRESSURE GAUGE
2	PT34347002 SEALING WASHER 10MM, NYLON
3	PT34347003 HYDRAULIC RAM ASSEMBLY
4	PT34347004 SET SCREW M6-1 X 8
5	PT34347005 RAM SADDLE
6	PT34347006 RAM MOUNTING NUT M72-6
7	PT34347007 RAM MOUNTING PLATE
8	PT34347008 RAM COLLAR
9	PT34347009 HEX BOLT M16-2 X 35
10	PT34347010 CROSS BEAM
11	PT34347011 FLAT WASHER 16MM
12	PT34347012 LOCK WASHER 16MM
13	PT34347013 HEX NUT M16-2
14	PT34347014 HEX NUT M10-1.5
15	PT34347015 LOCK WASHER 10MM
16	PT34347016 FLAT WASHER 10MM
17	PT34347017 PRESS V-BLOCK
18	PT34347018 BED SPACER 10ID X 22OD X 105L
19	PT34347019 BED BEAM
20	PT34347020 FRAME COLUMN
21	PT34347021 HEX BOLT M10-1.5 X 130
22	PT34347022 SUPPORT ROD
24	PT34347024 HEX BOLT M10-1.5 X 25
25	PT34347025 ANGLE BRACE
26	PT34347026 HEX BOLT M12-1.75 X 35
27	PT34347027 CENTER BRACE
28	PT34347028 FLAT WASHER 12MM
29	PT34347029 LOCK WASHER 12MM
30	PT34347030 HEX NUT M12-1.75
31	PT34347031 FRAME SUPPORT
32	PT34347032 HEX BOLT M12-1.75 X 25
33	PT34347033 PUMP MOUNTING BRACKET
34	PT34347034 FLAT WASHER 8MM
35	PT34347035 HEX BOLT M8-1.25 X 16
36	PT34347036 HYDRAULIC PUMP ASSEMBLY
37	PT34347037 PUMP PLUG M12-1.75
38	PT34347038 O-RING 13.8 X 2.4 P14
39	PT34347039 PUMP MOUNT
40	PT34347040 O-RING 48.7 X 3.5 P49
41	PT34347041 CONNECTING ROD
42	PT34347042 PUMP CYLINDER
43	PT34347043 KNURLED THUMB SCREW M10-1.25 X 10, D14
44	PT34347044 PUMP FILTER
45	PT34347045 HYDRAULIC PUMP
46	PT34347046 STEEL BALL 7/32"
47	PT34347047 STEEL BALL 8MM
48	PT34347048 CONICAL SPRING 0.4 X 6.5 X 12.5

REF PART #	DESCRIPTION
49	PT34347049 SEALING WASHER 10MM
50	PT34347050 CAP SCREW M10-1 X 8
51	PT34347051 SEALING WASHER 12MM, COPPER
52	PT34347052 PLUNGER SEAT
53	PT34347053 FACE SEAL ADAPTER 18.5MM
54	PT34347054 U-CUP SEAL W/O-RING 12 X 6.5
55	PT34347055 SET SCREW M6-1 X 8 DOG-PT SLOTTED
56	PT34347056 PLUNGER PIN
57	PT34347057 STEEL BALL 3.5MM
58	PT34347058 STEEL BALL SEAT
59	PT34347059 COMPRESSION SPRING 2 X 7.4 X 20
60	PT34347060 SHOULDER SCREW M3-.5 X 3, 10 X 5.5
61	PT34347061 O-RING 7.8 X 2.2
62	PT34347062 SHOULDER SCREW M10-1 X 5, 14 X 7
63	PT34347063 VALVE CAP
64	PT34347064 O-RING 5.5 X 3
65	PT34347065 KNOB BOLT M10-1 X 9.5
66	PT34347066 HYDRAULIC HOSE 1/4" D X 60" L
67	PT34347067 HOSE FITTING 1/4" NPT
68	PT34347068 FITTING CAP
69	PT34347069 STEEL PLUG
70	PT34347070 PUMP HANDLE
71	PT34347071 PUMP HANDLE SLEEVE
72	PT34347072 PIVOT PIN W/GROOVES
73	PT34347073 EXT RETAINING RING 9MM
74	PT34347074 PUMP CORE AXLE
75	PT34347075 O-RING 5.2 X 1.9
76	PT34347076 ELBOW ADAPTER 1/4" NPT X 20
77	PT34347077 O-RING 52 X 1.5
78	PT34347078 RAM ADJUSTMENT NUT
79	PT34347079 SET SCREW M6-1 X 6 CONE-PT
80	PT34347080 U-CUP SEAL W/O-RING 60 X 8
81	PT34347081 PISTON SEAT
82	PT34347082 O-RING 34.4 X 3.1 G35
83	PT34347083 RAM PISTON ROD
84	PT34347084 RAM RETURN SPRING
85	PT34347085 FITTING CAP
86	PT34347086 SEALING WASHER 10MM, NYLON
87	PT34347087 ADAPTER FITTING 1/4" NPT X 16
88	PT34347088 FITTING NUT M20-1.5
89	PT34347089 ROLL PIN 10 X 50
90	PT34347090 KNURLED FITTING SLEEVE
91	PT34347091 HOSE FITTING CORE 1/4" NPT
92	PT34347092 HOSE FITTING PLUG
93	PT34347093 RAM CYLINDER BARREL
94	PT34347094 RAM LIMIT RING



# Labels & Cosmetics



**Grizzly Industrial**

**Specifications**

Capacity: 20 Tons  
 Max. Distance to Table: 38-1/2"  
 Min. Distance to Table: 7/8"  
 Ram Max. Stroke: 7-1/2"  
 Ram Face Diameter: 1.89"  
 Bed Support Pin Dia.: 1"  
 Bed Adjustment Spacing: 4-1/2" On Center  
 Weight: 209 lbs.

Date: \_\_\_\_\_  
 SN: \_\_\_\_\_

Mfg. for Grizzly in China

**MODEL T34347**  
**20-TON HYDRAULIC SHOP PRESS**

**WARNING!**

To reduce risk of serious personal injury when using this machine:

1. Read and understand manual before using this machine.
2. Always wear ANSI-approved safety glasses when using this machine. Steel and other materials can fail or shatter under strong pressure.
3. Never place hands or fingers near press during operation.
4. Do not exceed rated capacity.
5. Before each use, inspect press for structural integrity. DO NOT use if there are signs of damage or excessive wear.
6. Secure press to floor.
7. Do not compress springs or other items that could disengage or shatter and cause a potential flying hazard.
8. Be sure workpiece is properly supported and will not shift during operation.
9. Do not operate under influence of drugs or alcohol, or when tired.
10. Prevent unauthorized use by children or untrained users.

REF	PART #	DESCRIPTION
101	PT34347101	READ MANUAL LABEL
102	PT34347102	SAFETY GLASSES LABEL
103	PT34347103	MACHINE ID LABEL

REF	PART #	DESCRIPTION
104	PT34347104	GRIZZLY.COM LABEL
105	PT34347105	TOUCH-UP PAINT, GLOSS BLACK
106	PT34347106	TOUCH-UP PAINT, GRIZZLY GREEN

## WARNING

Safety labels help reduce the risk of serious injury caused by machine hazards. If any label comes off or becomes unreadable, the owner of this machine **MUST** replace it in the original location before resuming operations. For replacements, contact (800) 523-4777 or [www.grizzly.com](http://www.grizzly.com).

