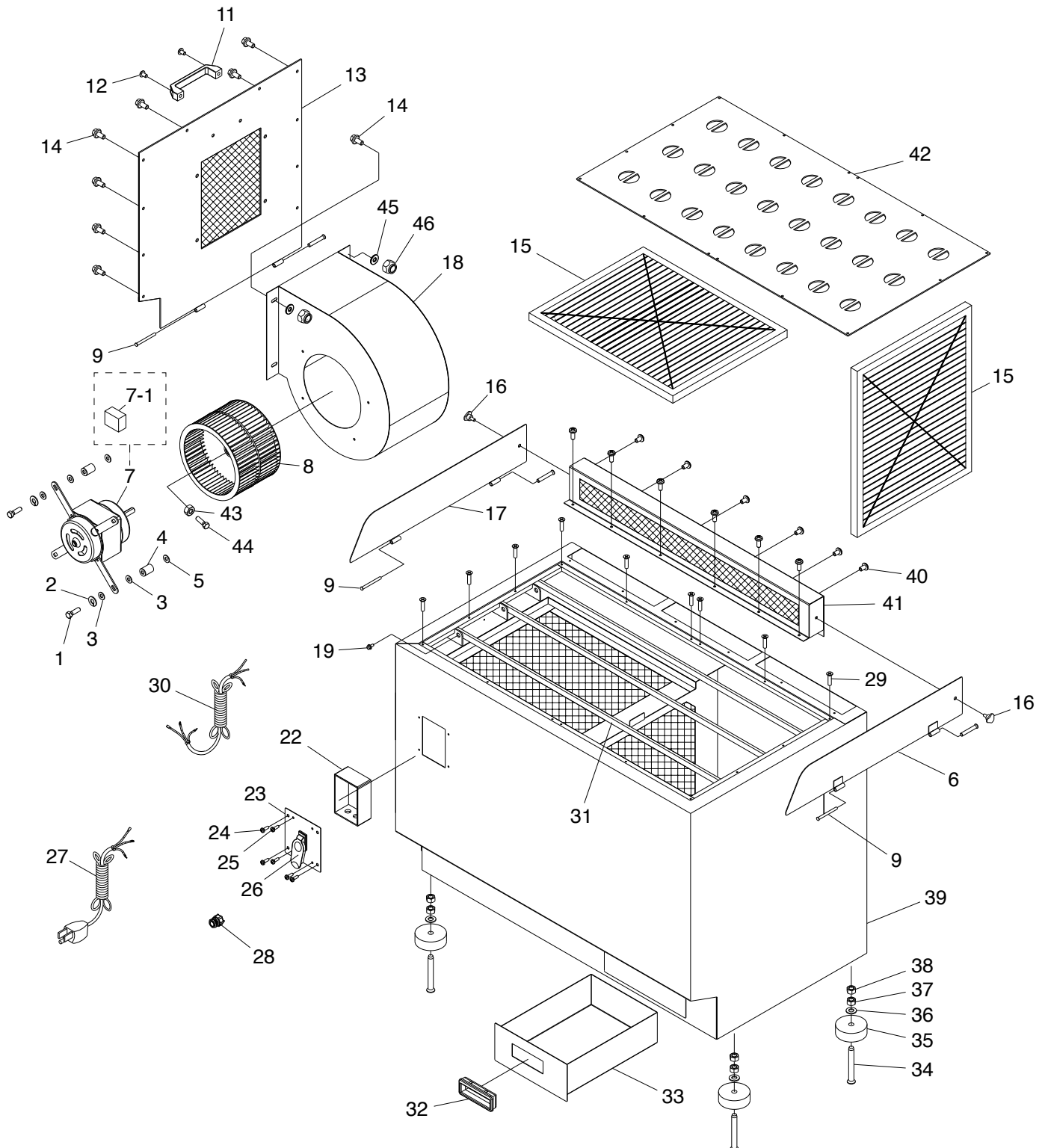


SECTION 9: PARTS

We do our best to stock replacement parts when possible, but we cannot guarantee that all parts shown are available for purchase. Call **(800) 523-4777** or visit **www.grizzly.com/parts** to check for availability.

Main



Main Parts List

REF	PART #	DESCRIPTION
1	PT34359001	HEX BOLT 1/4-20 X 1-1/4
2	PT34359002	LOCK WASHER 1/4
3	PT34359003	FLAT WASHER 1/4
4	PT34359004	SPACER 6.8ID X 18.5OD X 5.3L
5	PT34359005	FLAT WASHER 1/4
6	PT34359006	PANEL, RIGHT
7	PT34359007	MOTOR 3/4HP 110V 1-PH
7-1	PT34359007-1	R CAPACITOR 30M 250V 1-1/2" X 2-1/2"
8	PT34359008	IMPELLER
9	PT34359009	HINGE PIN 6 X 66MM
11	PT34359011	COVER HANDLE
12	PT34359012	PHLP HD SCR 1/4-20 X 5/8
13	PT34359013	MOTOR ACCESS DOOR
14	PT34359014	FLANGE BOLT 5/16-18 X 3/4
15	PT34359015	FILTER 20" X 16" X 1" 200 MICRON
16	PT34359016	KNOB BOLT 1/4-20 X 3/4
17	PT34359017	PANEL, LEFT
18	PT34359018	BLOWER HOUSING
19	PT34359019	FLANGE BOLT 5/16-18 X 1/2
22	PT34359022	SWITCH BOX
23	PT34359023	SWITCH PLATE
24	PT34359024	PHLP HD SCR 10-24 X 1/2

REF	PART #	DESCRIPTION
25	PT34359025	TAP SCREW M4 X 16
26	PT34359026	SAFETY PADDLE SWITCH JIHONG J9301A
27	PT34359027	POWER CORD 14G 3W 72" 5-15P
28	PT34359028	STRAIN RELIEF M16-1.5
29	PT34359029	FLAT HD SCR 10-24 X 3/8
30	PT34359030	MOTOR CORD 16G 3W 18"
31	PT34359031	SUPPORT BAR
32	PT34359032	DRAWER HANDLE
33	PT34359033	DRAWER
34	PT34359034	FLAT HD CAP SCR 1/2-13 X 4
35	PT34359035	FOOT PAD, RUBBER
36	PT34359036	FENDER WASHER 1/2
37	PT34359037	LOCK NUT 1/2-13
38	PT34359038	HEX NUT 1/2-13
39	PT34359039	MAIN HOUSING
40	PT34359040	PHLP HD SCR 10-24 X 3/8
41	PT34359041	SUCTION PANEL
42	PT34359042	TOP SUCTION PLATE
43	PT34359043	HEX NUT M8-1.25
44	PT34359044	HEX BOLT M8-1.25 X 20
45	PT34359045	FENDER WASHER 5/16
46	PT34359046	LOCK NUT 5/16-18



Labels & Cosmetics

101

Grizzly Industrial MODEL T34359 20" X 37" METALWORKING DOWNDRAFT TABLE

Specifications

Motor: 3/4 HP, 110V, 1-Ph, 60 Hz
Full-Load Current Rating: 5A
Air Suction Capacity: 1850 CFM
Filter Size: 20" x 16" x 1"
Filter: 200 Microns @ 90%
Impeller: 5-1/2" x 7" Squirrel Cage
Table Load Capacity: 440 lbs.
Weight: 220 lbs.

WARNING!

To reduce risk of serious personal injury when using this machine:

1. Read and understand owner's manual before operating.
2. Always wear approved eye protection and respirator.
3. Only plug power cord into a grounded outlet.
4. Never use machine to collect combustible or explosive metal dust (such as aluminum or magnesium), wood chips, sawdust, or other ordinary combustible material!
5. Always disconnect power before servicing or cleaning, and make sure impeller stops before opening door or removing covers.
6. Do not exceed maximum weight capacity.
7. Handle used filters carefully, and follow EPA guidelines for disposal.
8. Keep hands, long hair, and loose clothing away from inlet.
9. Do not modify machine, or use without filters in place.
10. Always use a brush or vacuum to clear metal chips or dust; do not use your hands, rags, or compressed air.
11. Inspect compartments after use for fire hazards and smoldering combustibles.
12. Never leave machine unattended during operation.
13. Do not expose to rain or use in wet locations.
14. Do not use if cord, plug, or any other electrical equipment becomes damaged—promptly repair!
15. Do not operate under influence of drugs or alcohol, or if tired.
16. Prevent unauthorized use by children or untrained users; restrict access or disable machine when unattended.

Date: _____
SN: _____

MANUAL
Grizzly Industrial
www.grizzly.com

Mfr. for Grizzly in Taiwan

102

WARNING!

EYE/LUNG INJURY
HAZARD!
Always wear safety glasses and a respirator when using this machine.

103

T34359

104

105

110

WARNING!

To reduce risk of death or serious injury, read manual BEFORE using machine.
To get a new manual, call (800) 523-4777 or go to www.grizzly.com.

109

WARNING!

INJURY/SHOCK
HAZARD!
Disconnect power before adjustments, maintenance, or service.

108



107

grizzly.com

106



REF	PART #	DESCRIPTION
101	PT34359101	MACHINE ID LABEL
102	PT34359102	GLASSES/RESPIRATOR LABEL
103	PT34359103	MACHINE NUMBER LABEL
104	PT34359104	TOUCH-UP PAINT, GLOSSY BLACK
105	PT34359105	TOUCH-UP PAINT, GRIZZLY GREEN

REF	PART #	DESCRIPTION
106	PT34359106	GRIZZLY NAMEPLATE-LARGE
107	PT34359107	GRIZZLY.COM LABEL
108	PT34359108	ELECTRICITY LABEL
109	PT34359109	DISCONNECT 110V LABEL
110	PT34359110	READ MANUAL LABEL

!WARNING

Safety labels help reduce the risk of serious injury caused by machine hazards. If any label comes off or becomes unreadable, the owner of this machine **MUST** replace it in the original location before resuming operations. For replacements, contact (800) 523-4777 or www.grizzly.com.

