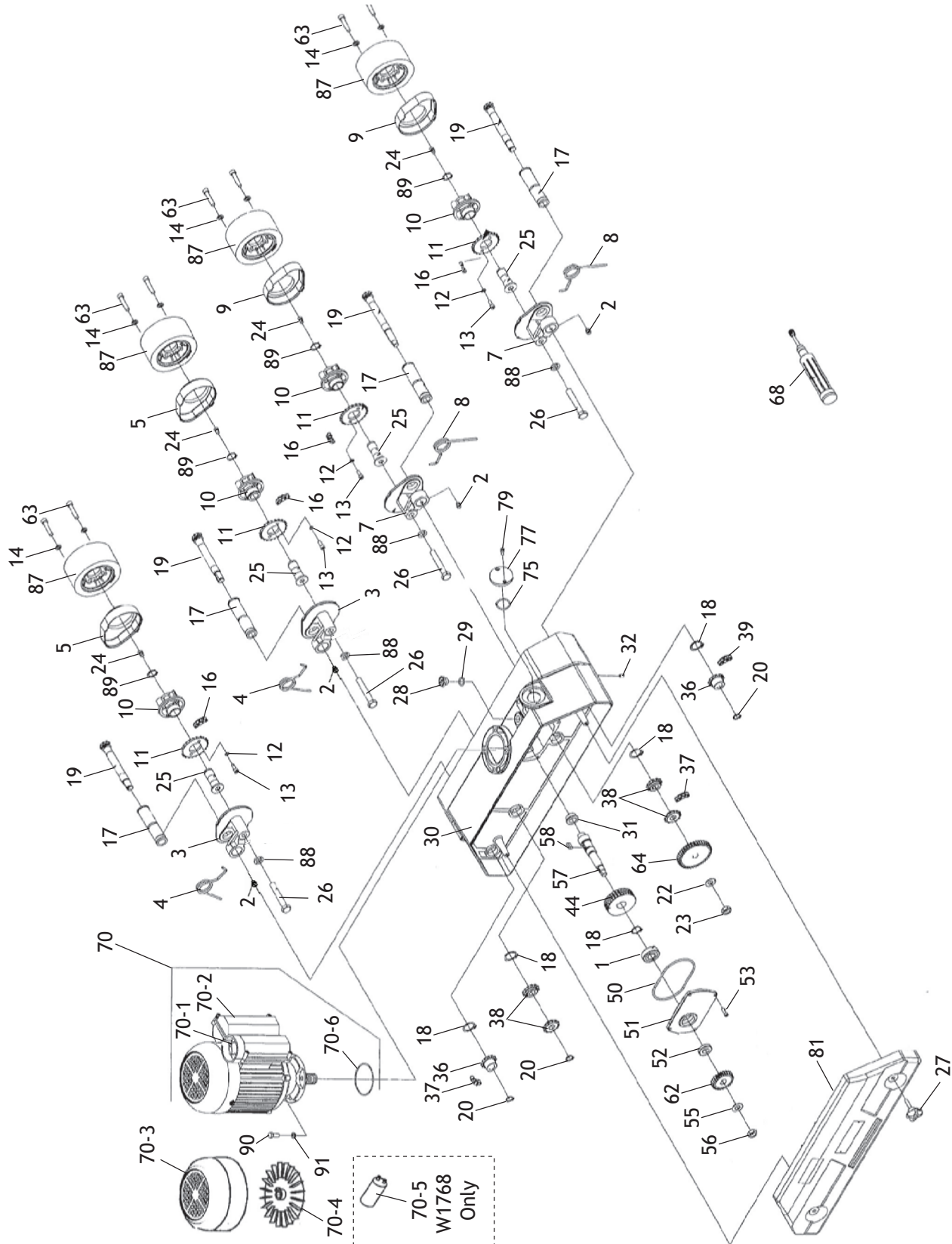


PARTS

Main Breakdown

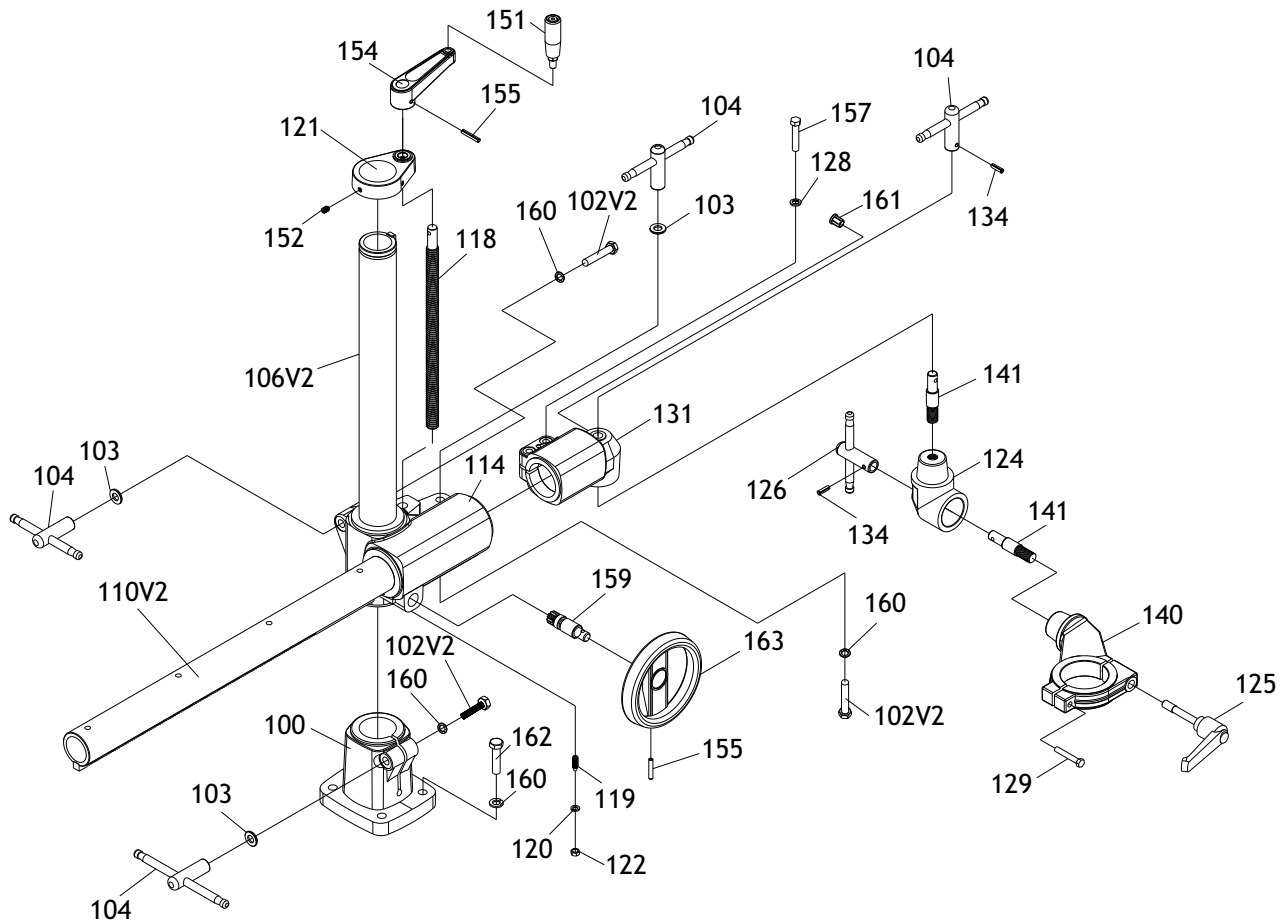


Main Parts List

REF	PART #	DESCRIPTION
1	XP6203-OPE	BALL BEARING 6203 OPEN
2	X1768002	GREASE FITTING M6-1 X 1
3	X1768003	SPROCKET CASE
4	X1767004	TORSION SPRING 3.8 X 102
5	X1768005	CASE COVER A
7	X1768007	SPROCKET CASE
8	X1767004	TORSION SPRING 3.8 X 102
9	X1768009	CASE COVER B
10	X1768010	ROLLER SUPPORT
11	X1768011	SPROCKET
12	XPLW03M	LOCK WASHER 6MM
13	XPCAP01M	CAP SCREW M6-1 X 16
14	XPLW04M	LOCK WASHER 8MM
16	X1768016	CHAIN
17	X1768017	TUBE
18	XPR58M	EXT RETAINING RING 24
19	X1768019	SPROCKET SHAFT
20	XPR47M	EXT RETAINING RING 13MM
22	XPW01	FLAT WASHER 1/2
23	XPNO9M	HEX NUT M12-1.75
24	X1768024	GREASE NIPPLE
25	X1768025	ROLLER SPINDLE
26	X1768026	SPROCKET CASE HEX BOLT M12-1.75
27	X1768027	KNOB
28	X1768028	OIL CAP
29	XPORP015	O-RING 14.8 X 2.4 P15
30	X1768030	CASTING
31	X1768031	BUSHING
32	XPSS01M	SET SCREW M6-1 X 10
36	X1768036	SPROCKET
37	X1768037	CHAIN
38	X1768038	DOUBLE SPROCKET

REF	PART #	DESCRIPTION
39	X1768039	CHAIN
44	X1768044	WORM GEAR
50	X1767050	O-RING 101.19MM X 3.53MM
51	X1768051	WORM GEAR BOX COVER
52	X1768052	OIL SEAL
53	XPCAP24M	CAP SCREW M5-.8 X 16
55	XPW01	FLAT WASHER 1/2
56	XPNO9M	HEX NUT M12-1.75
57	X1768057	WORM GEAR SHAFT
58	X1768058	WORM GEAR KEY
62	X1768062	GEAR 25T
63	XPCAP12M	CAP SCREW M8-1.25 X 40
64	X1768064	GEAR 40T
68	X1768068	LUBRICATOR
70	X1768070	MOTOR 220V 2SPD 1PH (W1768)
70	X1769070	MOTOR 220V 2SPD 3PH (W1769)
70-1	X1768070-1	SWITCH W/ELECTRICAL BOX
70-2	X1768070-2	BOX COVER
70-3	X1768070-3	FAN COVER
70-4	X1768070-4	MOTOR FAN
70-5	XPC035A	R CAP 35M 250V 1-1/2 X 2-3/4 (W1768)
70-6	X1768070-6	SEALING RING
75	XPORS028	O-RING 27.5 X 2.0 S28
77	X1768077	CAP
79	XPCAP50M	CAP SCREW M5-.8 X 10
81	X1768081	BACK COVER
87	D3720	FLANGE WITH RUBBER ROLLER
88	XPLW05M	LOCK WASHER 12MM
89	XPR09M	EXT RETAINING RING 20MM
90	XPB09M	HEX BOLT M8-1.25 X 20
91	XPLW04M	LOCK WASHER 8MM

Stand Breakdown



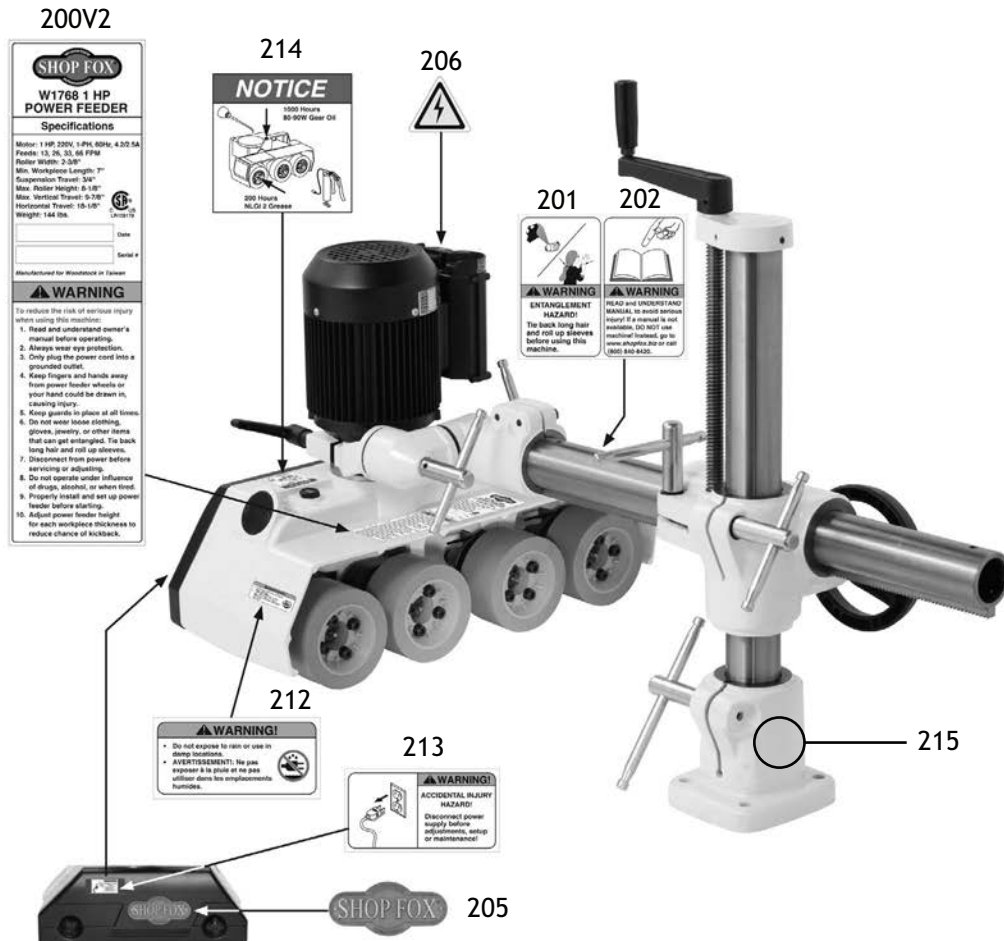
REF	PART #	DESCRIPTION
100	X1768101	COLUMN BASE
102V2	XPB43M	HEX BOLT M12-1.75 X 75
103	XPW06M	FLAT WASHER 12MM
104	X1768104	T-HANDLE
106V2	X1768106V2	VERTICAL COLUMN W/GUIDE V2.02.97
110V2	X1768110V2	HORIZONTAL TUBE W/RACK V2.02.97
114	X1768114	ELEVATING BRACKET
118	X1768118	VERTICAL LEAD SCREW
119	XPSS09M	SET SCREW M8-1.25 X 20
120	XPLW04M	LOCK WASHER 8MM
121	X1768121	COLUMN CAP
122	XPNO3M	HEX NUT M8-1.25
124	X1768124	ELBOW
125	X1768125	LOCK LEVER
126	X1768126	T-HANDLE
128	XPW04M	FLAT WASHER 10MM

REF	PART #	DESCRIPTION
129	XPB22M	HEX BOLT M8-1.25 X 50
131	X1768131	HORIZONTAL TUBE CONE
134	XPRP71M	ROLL PIN 6 X 22
140	X1768140	SWIVEL CLAMP CONE
141	X1768141	SHOULDER LOCK STUD
151	X1768151	HANDLE
152	X1768152	POINTED SET SCREW M8-1.25 x 12
154	X1768154	CRANK ARM
155	XPRP32M	ROLL PIN 6 X 40
157	XPB73M	HEX BOLT M10-1.5 X 50
159	X1768159	PINION
160	XPLW05M	LOCK WASHER 12MM
161	X1768161	STRAIN RELIEF
162	XPB33M	HEX BOLT M12-1.75 X 50
163	X1768163	CRANK HANDWHEEL

Labels & Cosmetics

⚠️ WARNING

Safety labels warn about machine hazards and how to prevent serious personal injury. The owner of this machine **MUST** maintain the original location and readability of all labels on this machine. If any label is removed or becomes unreadable, **REPLACE** that label before allowing machine to be operated again. Contact us at (360) 734-3482 or www.shopfoxtools.com to order new labels.



REF	PART #	DESCRIPTION
200V2	X1768200V2	MACHINE ID LABEL CSA V2.10.12 (W1768)
200V2	X1769200V2	MACHINE ID LABEL CSA V2.10.12 (W1769)
201	X1765201	ENTANGLEMENT LABEL
202	X1765202	READ MANUAL LABEL
205	D3375	SHOP FOX NAMEPLATE-SMALL
206	XLABEL-04A	ELECTRICITY LABEL 0.7W X 0.6H

REF	PART #	DESCRIPTION
212	X1765207	DAMPNESS WARNING LABEL
213	X1765204	DISCONNECT POWER LABEL
214	X1765208	LUBRICATION NOTICE LABEL
215	XPPAINT-1	SHOP FOX WHITE TOUCH-UP PAINT