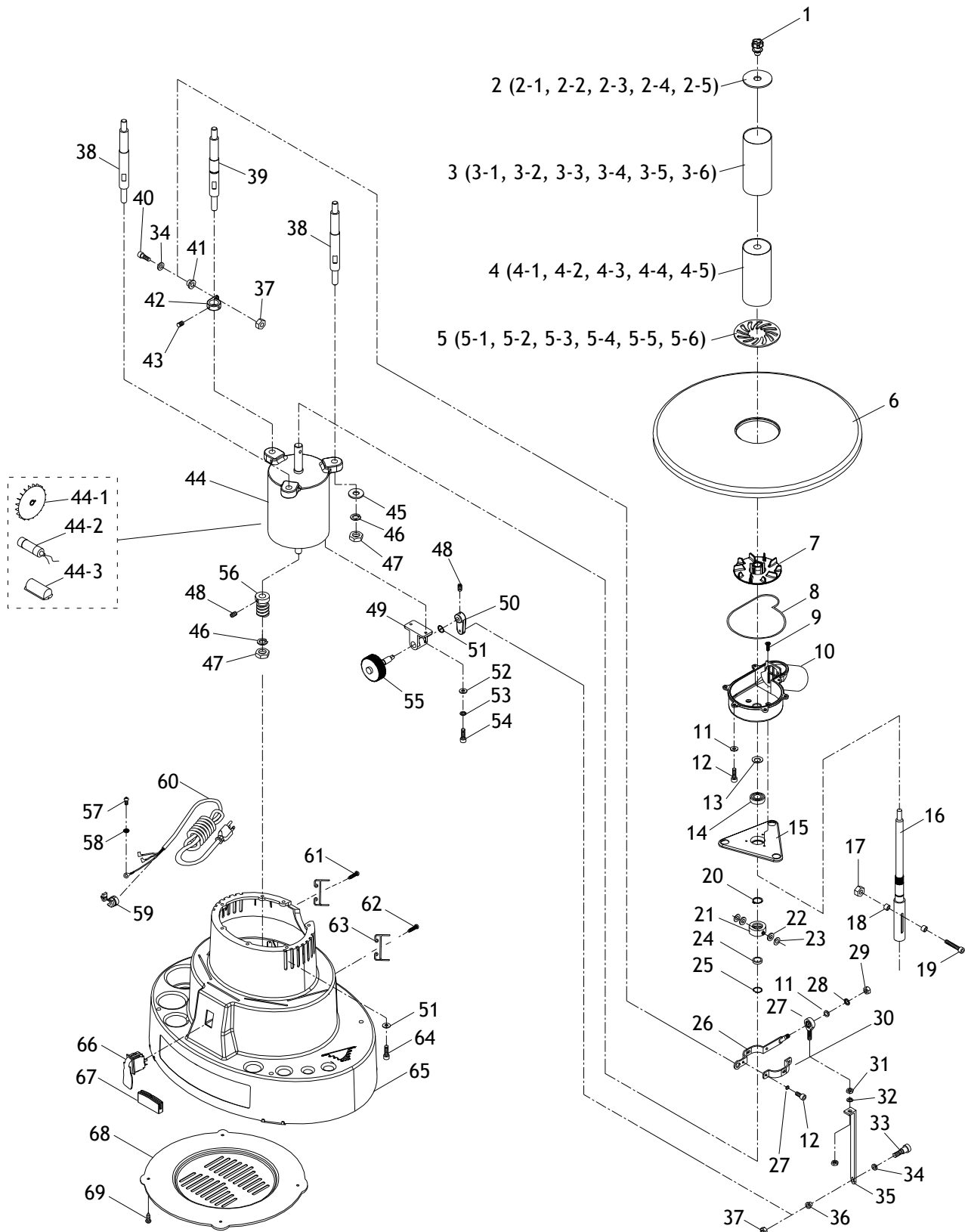


# PARTS

## Main



# Main Parts List

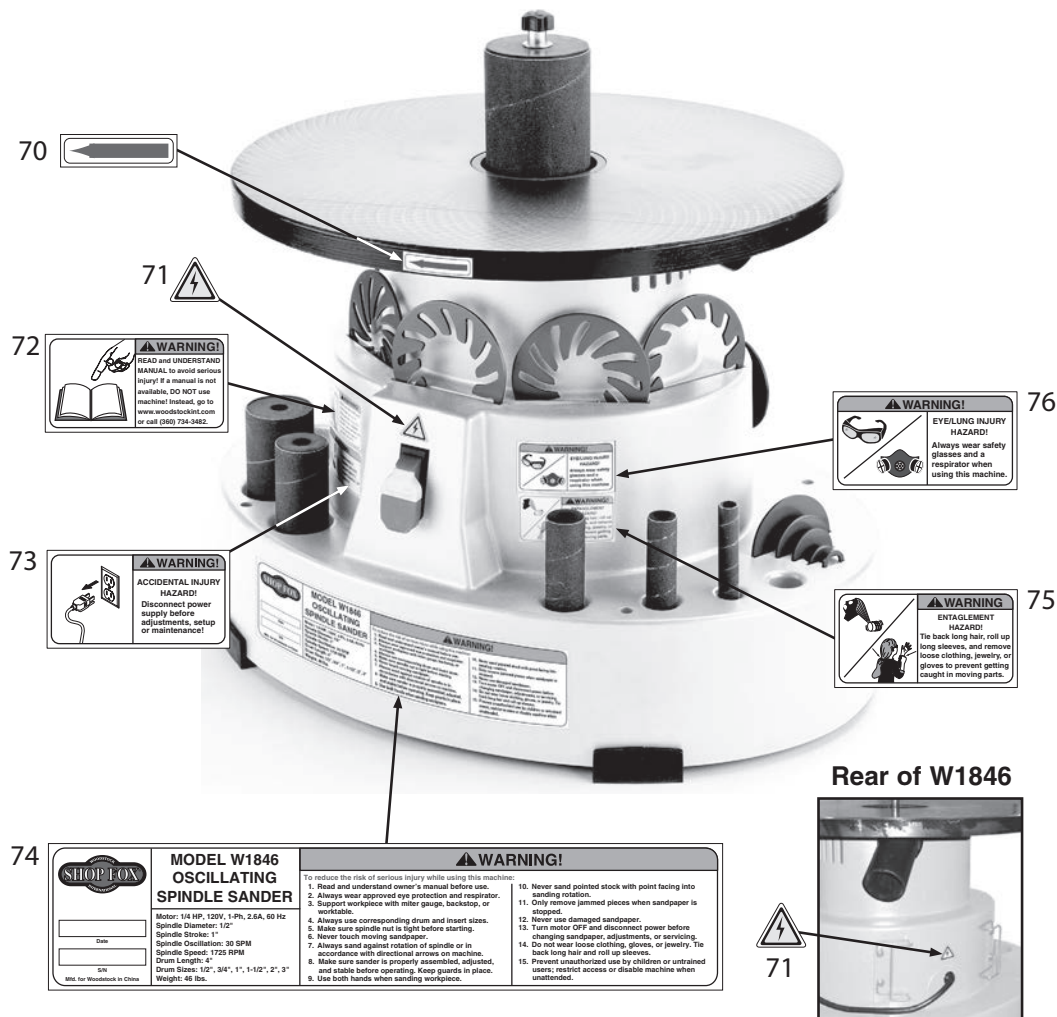
REF	PART #	DESCRIPTION
1	X1846001	KNOB M8-1.25 LH
2	X1846002	DRUM WASHER (SET OF 5)
2-1	X1846002-1	DRUM WASHER 3/4"
2-2	X1846002-2	DRUM WASHER 1"
2-3	X1846002-3	DRUM WASHER 1-1/2"
2-4	X1846002-4	DRUM WASHER 2"
2-5	X1846002-5	DRUM WASHER 3"
3	X1846003	ABRASIVE SLEEVE (SET OF 6)
3-1	X1846003-1	ABRASIVE SLEEVE 1/2"
3-2	X1846003-2	ABRASIVE SLEEVE 3/4"
3-3	X1846003-3	ABRASIVE SLEEVE 1"
3-4	X1846003-4	ABRASIVE SLEEVE 1-1/2"
3-5	X1846003-5	ABRASIVE SLEEVE 2"
3-6	X1846003-6	ABRASIVE SLEEVE 3"
4	X1846004	RUBBER DRUM (SET OF 5)
4-1	X1846004-1	RUBBER DRUM 3/4"
4-2	X1846004-2	RUBBER DRUM 1"
4-3	X1846004-3	RUBBER DRUM 1-1/2"
4-4	X1846004-4	RUBBER DRUM 2"
4-5	X1846004-5	RUBBER DRUM 3"
5	X1846005	TABLE INSERT (SET OF 6)
5-1	X1846005-1	TABLE INSERT 1/2"
5-2	X1846005-2	TABLE INSERT 3/4"
5-3	X1846005-3	TABLE INSERT 1"
5-4	X1846005-4	TABLE INSERT 1-1/2"
5-5	X1846005-5	TABLE INSERT 2"
5-6	X1846005-6	TABLE INSERT 3"
6	X1846006	TABLE
7	X1846007	FAN
8	X1846008	GASKET 10 X 10 X 500MM
9	X1846009	FLAT HD CAP SCR M5-.8 X 10
10	X1846010	FAN HOUSING
11	X1846011	FLAT WASHER 5MM
12	X1846012	CAP SCREW M5-.8 X 12
13	X1846013	SEAL 16 X 30 X 2.5
14	X1846014	BALL BEARING 6003ZZ
15	X1846015	MOTOR PLATE
16	X1846016	SPINDLE
17	X1846017	HEX NUT M5-.8
18	X1846018	BUSHING 5MM
19	X1846019	CAP SCREW M5-.8 X 40
20	X1846020	EXT RETAINING RING 17MM
21	X1846021	COLLAR
22	X1846022	RING 7 X 16 X 2
23	X1846023	WAVY WASHER 8 X 14 X 0.4MM
24	X1846024	BALL BEARING 6903ZZ
25	X1846025	INT RETAINING RING 30MM

REF	PART #	DESCRIPTION
26	X1846026	SPINDLE BRACKET (LONG)
27	X1846027	ROD END BEARING M8-1.25 x 60
28	X1846028	LOCK WASHER 5MM
29	X1846029	HEX NUT M5-.8
30	X1846030	SPINDLE BRACKET (SHORT)
31	X1846031	HEX NUT M8-1.25
32	X1846032	LOCK WASHER 8MM
33	X1846033	SHOULDER SCREW M6-1 X 16, 8 X 10
34	X1846034	FLAT WASHER 8MM
35	X1846035	LINK
36	X1846036	BUSHING 6MM
37	X1846037	HEX NUT M6-1
38	X1846038	MOTOR STANDOFF
39	X1846039	MOTOR STANDOFF W/GROOVE
40	X1846040	SHOULDER SCREW
41	X1846041	BUSHING 8MM
42	X1846042	PIVOT
43	X1846043	SET SCREW M6-1 X 8
44	X1846044	MOTOR 1/4HP 120V
44-1	X1846044-1	MOTOR FAN
44-2	X1846044-2	R CAPACITOR 20UF 250V 1-3/8 X 2-3/4
44-3	X1846044-3	CAPACITOR COVER
45	X1846045	FLAT WASHER 10MM
46	X1846046	LOCK WASHER 10MM
47	X1846047	HEX NUT M10-1.5
48	X1846048	SET SCREW M5-.8 X 6
49	X1846049	BLOCK
50	X1846050	CAM
51	X1846051	EXT RETAINING RING 15MM
52	X1846052	FLAT WASHER 6MM
53	X1846053	LOCK WASHER 6MM
54	X1846054	CAP SCREW M6-1 X 16
55	X1846055	WORM GEAR W/SPINDLE
56	X1846056	WORM
57	X1846057	PHLP HD SCR M5-.8 X 10
58	X1846058	EXT TOOTH WASHER 5MM
59	X1846059	STRAIN RELIEF 3/8" TYPE 1
60	X1846060	POWER CORD 18G 3W 72" 5-15
61	X1846061	TAP SCREW M4.8 X 25
62	X1846062	TAP SCREW M4.8 X 32
63	X1846063	CORD WRAP BRACKET
64	X1846064	CAP SCREW M6-1 X 12
65	X1846065	BASE
66	X1846066	PADDLE SWITCH KEDU HY18 20A/12A 125/250V
67	X1846067	RUBBER FOOT
68	X1846068	BASE COVER
69	X1846069	TAP SCREW M5 X 10

# Labels & Cosmetics

## ! WARNING

Safety labels warn about machine hazards and how to prevent serious personal injury. The owner of this machine **MUST** maintain the original location and readability of all labels on this machine. If any label is removed or becomes unreadable, **REPLACE** that label before allowing machine to be operated again. Contact us at (360) 734-3482 or [www.woodstockint.com](http://www.woodstockint.com) to order new labels.



REF	PART #	DESCRIPTION
70	X1846070	DIRECTION ARROW LABEL
71	X1846071	ELECTRICITY LABEL
72	X1846072	READ MANUAL LABEL
73	X1846073	DISCONNECT POWER LABEL

REF	PART #	DESCRIPTION
74	X1846074	MACHINE ID LABEL
75	X1846075	ENTANGLEMENT HAZARD LABELS
76	X1846076	GLASSES/RESPIRATOR LABEL