



Model H5528 & H5529 Medium Duty Spray Gun

This gravity feed spray gun includes a 1.4mm nozzle, a durable 600cc cup, an air adjust valve, and a chrome finish for easy clean-up.

SETUP

1. Thread the paint reservoir onto the top of the spray gun and attach the airline with a 1/4" NPT fitting.
2. Adjust the air pressure so that the gun is supplied with 30 PSI.

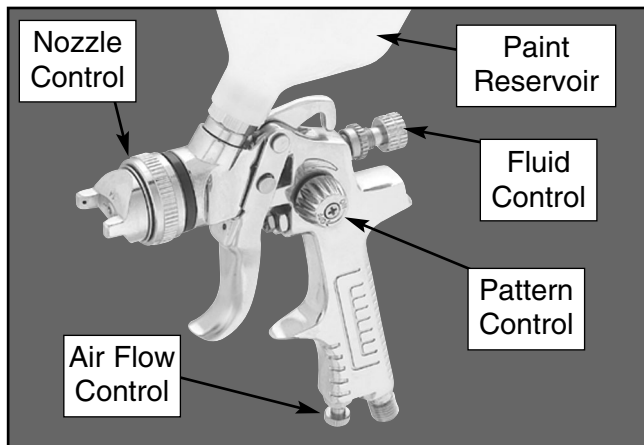


Figure 1. Spray gun controls.

ADJUSTMENTS

Identify the spray gun controls in **Figure 1** and adjust in the following order:

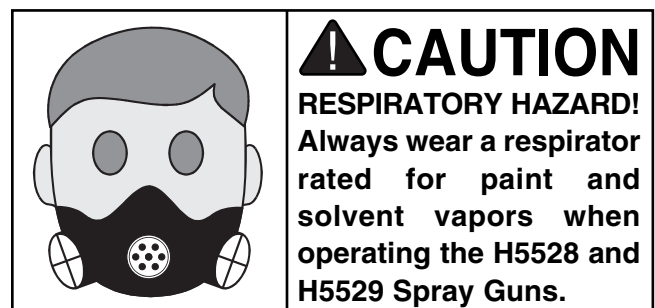
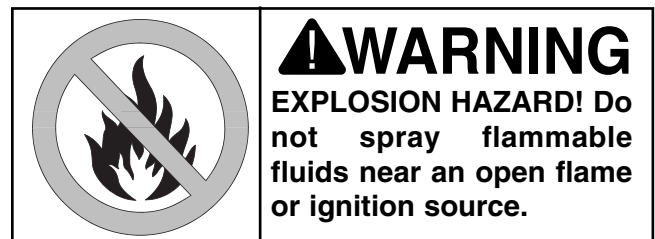
1. **Fluid Control**—Adjusts how far back the trigger can be pulled, which affects the volume of finish released.
2. **Air Flow Control**—Adjusts the volume of air that mixes with the finish, and thus, increases or decreases the finish atomization.
3. **Pattern Control**—Variably adjusts the spray pattern from round to a wide fan.
4. **Nozzle Control**—Adjusts the spray pattern from vertical to horizontal.

OPERATION

Hold the sprayer 6"–8" from the workpiece, and keep the spray gun perpendicular to the workpiece during strokes. *DO NOT pivot your wrist when spraying!* Feather strokes by starting your stroke before triggering the spray gun, and releasing the trigger before finishing the stroke. Overlap strokes by 50%

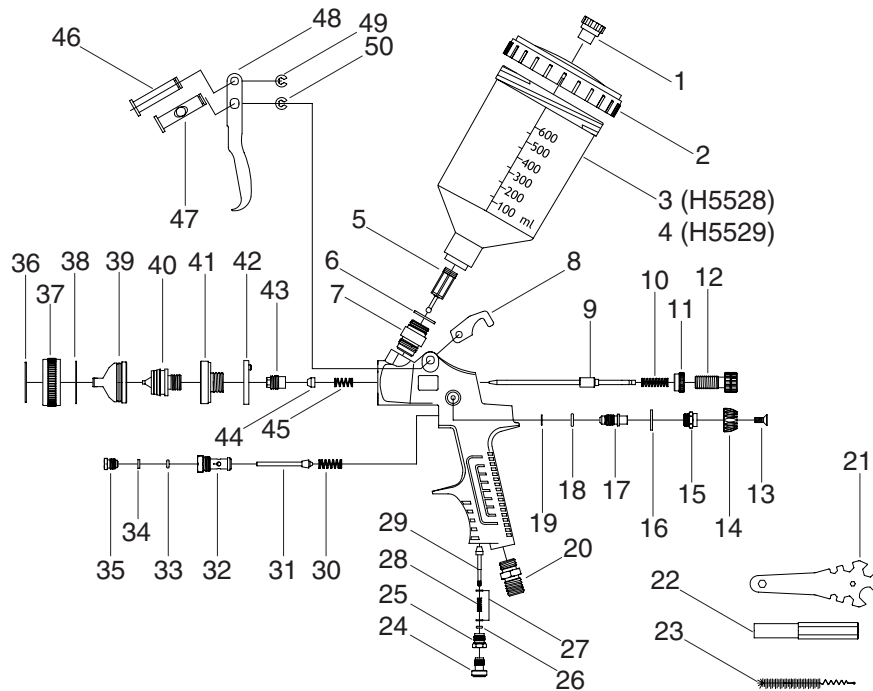
MAINTENANCE

1. Clean the spray gun passages after each use by spraying a small amount of thinner. *DO NOT immerse the spray gun in the thinner.*
2. To avoid internal damage, use only the included brush soaked with thinner when cleaning inside the spray gun.
3. Regularly clean the filter between the reservoir and the spray gun.
4. Trigger, control valves, and springs should be lubricated periodically.



If you need additional help with these procedures, call our service department at: (570) 546-9663.

H5528 & H5529 Parts Diagram



REF	PART #	DESCRIPTION
1	PH5528001	BREATHER PLUG
2	PH5528002	RESERVOIR COVER
3	PH5528003	PLASTIC RESERVOIR
4	PH5529004	ALUMINUM RESERVOIR
5	PH5528005	FILTER
6	PH5528006	FLUID INLET JOINT SEAL
7	PH5528007	FLUID INLET JOINT
8	PH5528008	HANGER
9	PH5528009	FLUID ADJ. NEEDLE
10	PH5528010	FLUID NEEDLE SPRING
11	PH5528011	JOINT CAP
12	PH5528012	FLUID ADJ. KNOB
13	PFH31M	FLAT HD SCR M6-1 X 8
14	PH5528014	PATTERN ADJ. KNOB
15	PH5528015	PATTERN ADJ. KNOB
16	PH5528016	COPPER WASHER 8MM
17	PH5528017	PATTERN ADJ. SCREW
18	PH5528018	O-RING
19	PEC09M	E-CLIP 6MM
20	PH5528020	AIR INLET PLUG
21	PH5528021	MULTI-TOOL WRENCH
22	PH5528022	HEX SOCKET TOOL
23	PH5528023	BRUSH
24	PH5528024	AIR ADJ. SCREW
25	PH5528025	AIR ADJ. KNOB

REF	PART #	DESCRIPTION
26	PH5528026	O-RING
27	PH5528027	DOMED SEAL WASHER
28	PH5528028	AIR ADJ. SPRING
29	PH5528029	AIR INLET VALVE
30	PH5528030	SWITCH SPRING
31	PH5528031	AIR VALVE BODY
32	PH5528032	SWITCH KNOB
33	PH5528033	O-RING
34	PH5528034	DOMED SEAL WASHER
35	PH5528035	DIRECTION SCREW
36	PH5528036	LOCKED SPRING
37	PH5528037	NOZZLE NUT
38	PH5528038	SEAL WASHER 30MM
39	PH5528039	ATOMIZATION
40	PH5528040	FLUID NOZZLE
41	PH5528041	FLUID NOZZLE PLUG
42	PH5528042	SEAL WASHER 10MM
43	PH5528043	DIRECTION SCREW
44	PH5528044	DOMED SEAL WASHER
45	PH5528045	SPRING
46	PH5528046	TRIGGER PIN I
47	PH5528047	TRIGGER PIN II
48	PH5528048	TRIGGER
49	PEC02M	E-CLIP 4MM
50	PEC02M	E-CLIP 4MM

ONLINE MANUAL DISCLAIMER

THE INFORMATION IN THIS MANUAL REPRESENTS THE CONFIGURATION OF THE MACHINE AS IT IS CURRENTLY BEING SHIPPED. THE MACHINE CONFIGURATION CAN CHANGE AS PRODUCT IMPROVEMENTS ARE INCORPORATED. IF YOU OWN AN EARLIER VERSION OF THE MACHINE, THIS MANUAL MAY NOT EXACTLY DEPICT YOUR MACHINE. CONTACT CUSTOMER SERVICE IF YOU HAVE ANY QUESTIONS ABOUT DIFFERENCES. PREVIOUS VERSIONS ARE NOT AVAILABLE ONLINE.